

TOPEKA, KANSAS

AL-620 (FAA)

RNAV (GPS) RWY 31

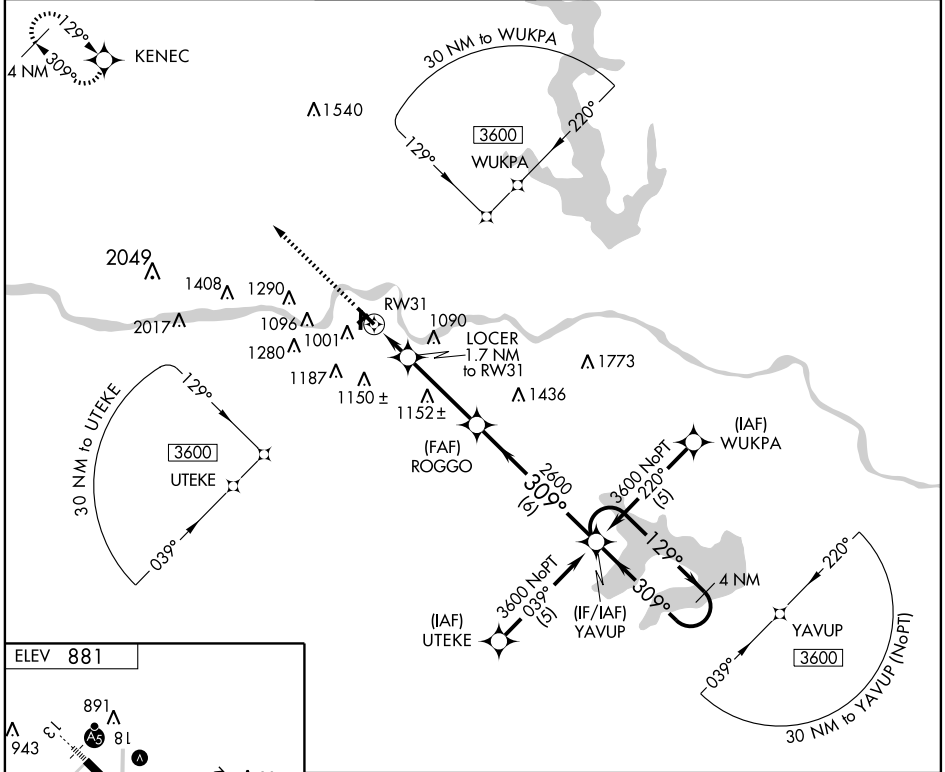
TOPEKA/ PHILIP BILLARD MUNI (TOP)

APP CRS 309°	Rwy Idg TDZE Apt Elev	5099 879 881
------------------------	-----------------------------	---

▽ GPS or RNP-0.3 required. DME/DME RNP-0.3 NA. **MISSED APPROACH:** Climb to 3600 direct KENEC WP and hold.

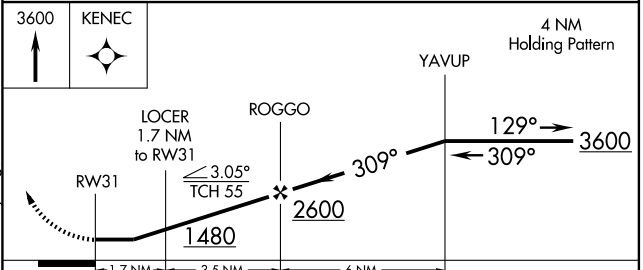
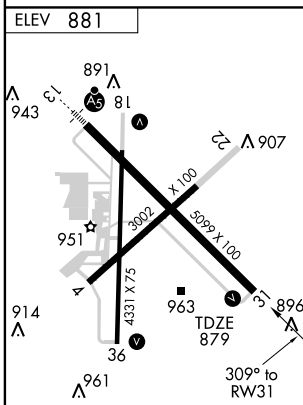
▲ NA

ASOS 121.275	KANSAS CITY CENTER 123.8 343.7	TOPEKA TOWER ★ 118.7 (CTAF) 257.8	GND CON 121.9	CLNC DEL 121.9	UNICOM 122.95
------------------------	--	---	-------------------------	--------------------------	-------------------------



NC-2, 22 OCT 2009 to 19 NOV 2009

NC-2, 22 OCT 2009 to 19 NOV 2009



CATEGORY	A	B	C	D
LNAV MDA	1260-1 381 (400-1)			NA
CIRCLING	1340-1 459 (500-1)	1360-1 479 (500-1)	1460-1½ 579 (600-1½)	NA

TOPEKA, KANSAS
Orig 07018

39°04' N - 95°37' W

RNAV (GPS) RWY 31