

TOPEKA, KANSAS

AL-620 (FAA)

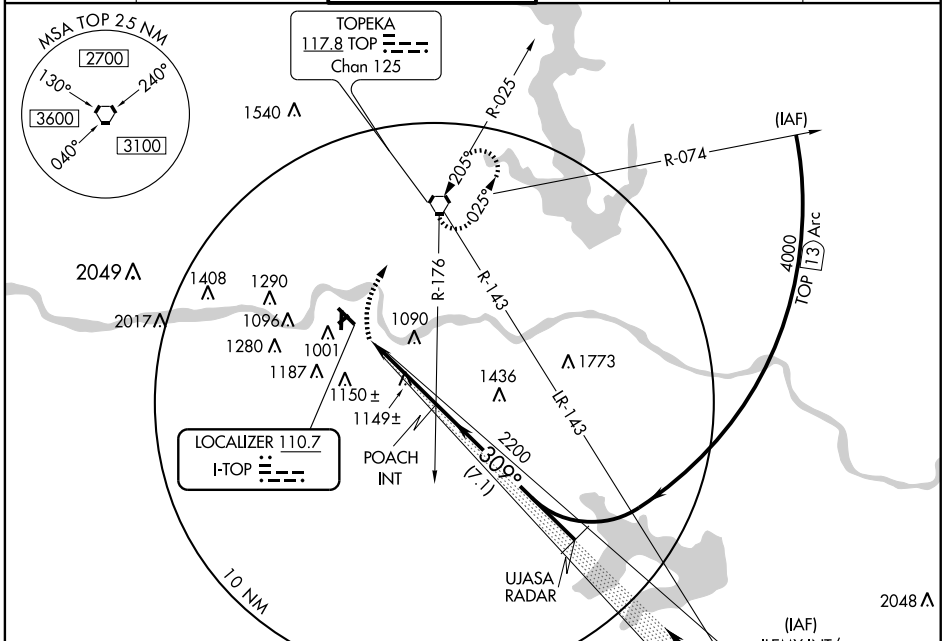
# LOC BC RWY 31

TOPEKA/PHILIP BILLARD MUNI (TOP)

LOC I-TOP <b>110.7</b>	APP CRS <b>309°</b>	Rwy Idg <b>5099</b>
		TDZE <b>879</b>
		Apt Elev <b>881</b>

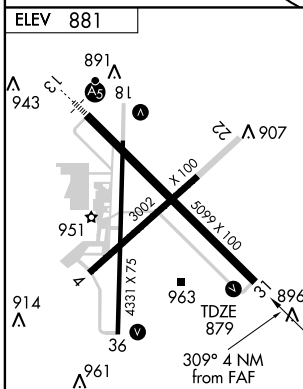
Disregard Glide Slope indications. MISSED APPROACH: Climbing right turn to 2800 direct TOP VORTAC and hold.

ASOS <b>121.275</b>	KANSAS CITY CENTER <b>123.8 343.7</b>	TOPEKA TOWER ★ <b>118.7 (CTAF) 257.8</b>	GND CON <b>121.9</b>	CLNC DEL <b>121.9</b>	UNICOM <b>122.95</b>
------------------------	--	---	-------------------------	--------------------------	-------------------------



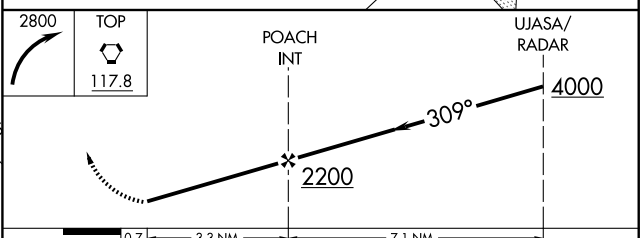
NC-2, 22 OCT 2009 to 19 NOV 2009

NC-2, 22 OCT 2009 to 19 NOV 2009



FAF to MAP 3.3 NM

Knots	60	90	120	150	180
Min:Sec	3:18	2:12	1:39	1:19	1:06



CATEGORY	A	B	C	D
S-31	1400-1	521 (600-1)	1400-1½ 521 (600-1½)	NA
CIRCLING	1400-1 519 (600-1)	1420-1 539 (600-1)	1460-1½ 579 (600-1½)	NA

TOPEKA, KANSAS  
Amdt 19A 06327

39°04'N-95°37'W

# TOPEKA/PHILIP BILLARD MUNI (TOP) LOC BC RWY 31