

TOPEKA, KANSAS

AL-620 (FAA)

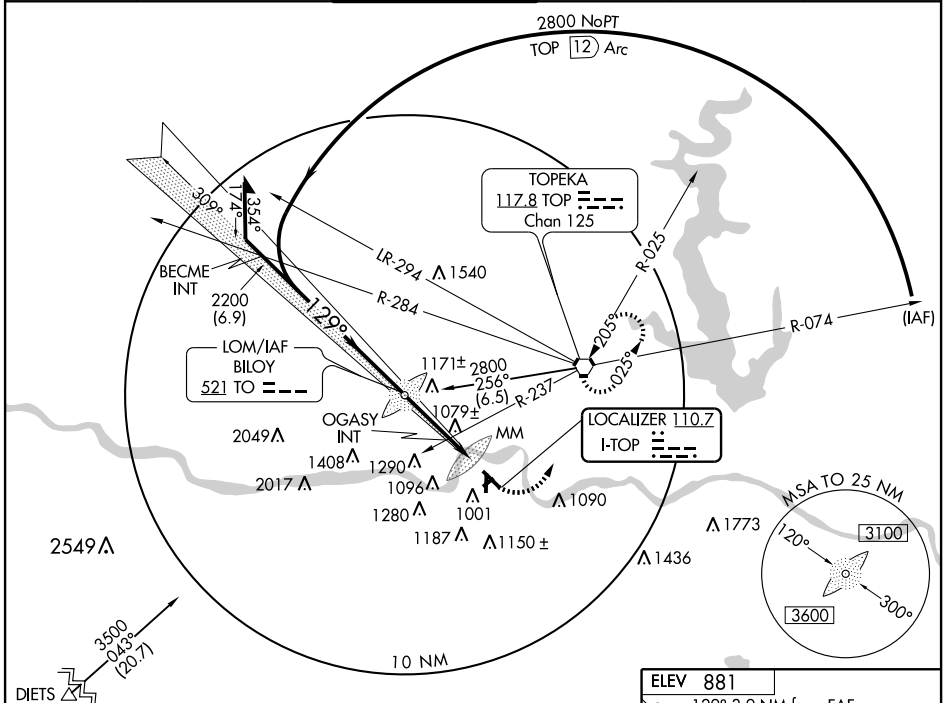
ILS RWY 13

TOPEKA/PHILIP BILLARD MUNI (TOP)

LOC I-TOP 110.7	APP CRS 129°	Rwy Idg 5099
		TDZE 881
		Apt Elev 881

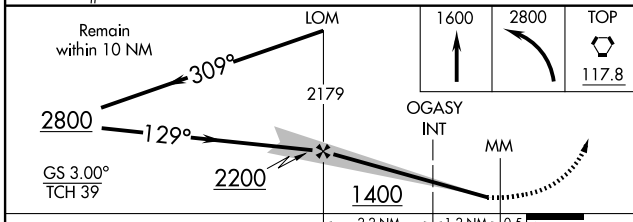
		MISSED APPROACH: Climb to 1600 then climbing left turn to 2800 direct TOP VORTAC and hold.
--	--	--

ASOS 121.275	KANSAS CITY CENTER 123.8 343.7	TOPEKA TOWER* 118.7 (CTAF) 0 257.8	GND CON 121.9	CLNC DEL 121.9	UNICOM 122.95
------------------------	--	--	-------------------------	--------------------------	-------------------------

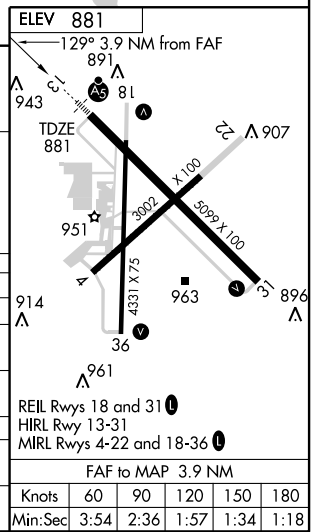


NC-2, 22 OCT 2009 to 19 NOV 2009

NC-2, 22 OCT 2009 to 19 NOV 2009



CATEGORY	A	B	C	D
S-ILS-13	1081-½ 200 (200-½)			NA
S-LOC-13	1400-½ 519 (600-½)		1400-1 519 (600-1)	NA
CIRCLING	1400-1 519 (600-1)	1420-1 539 (600-1)	1460-1½ 579 (600-1½)	NA
OGASY INT MINIMUMS				
S-LOC-13	1340-½ 459 (500-½)		1340-¾ 459 (500-¾)	NA
CIRCLING	1400-1 519 (600-1)	1420-1 539 (600-1)	1460-1½ 579 (600-1½)	NA



TOPEKA, KANSAS
Amdt 32A 06327

39°04'N-95°37'W

TOPEKA/PHILIP BILLARD MUNI (TOP)
ILS RWY 13