

FLINT, MICHIGAN

AL-618 (FAA)

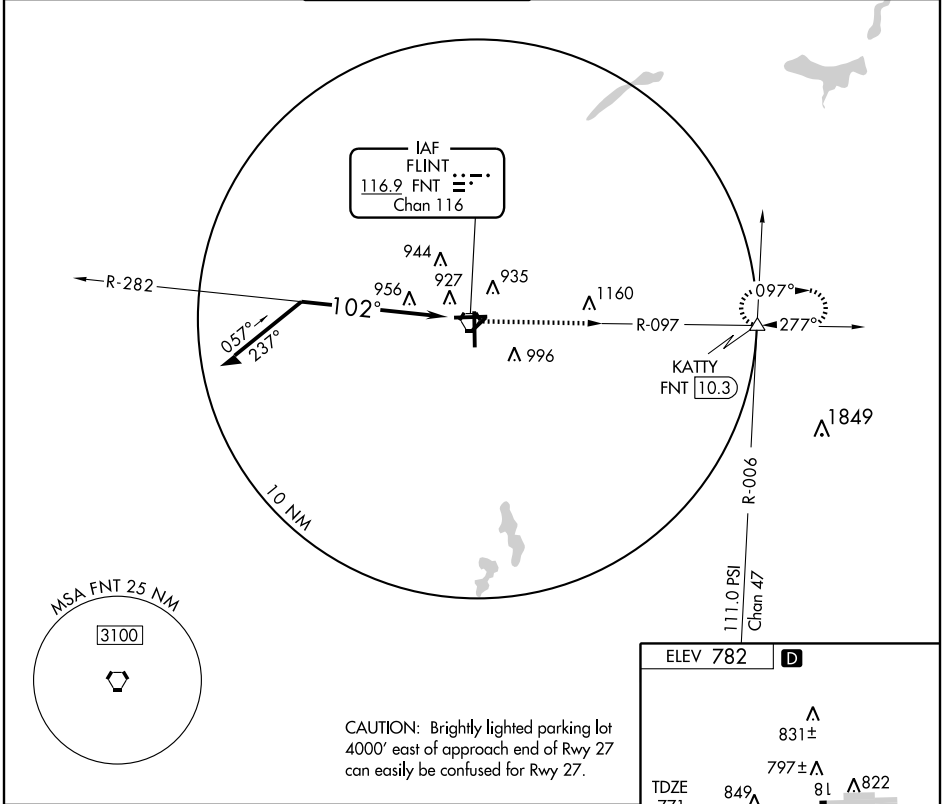
VOR RWY 9

FLINT / BISHOP INTL (FNT)

VORTAC FNT 116.9 Chan 116	APP CRS 102°	Rwy Idg 7200 TDZE 771 Apt Elev 782
---	------------------------	---

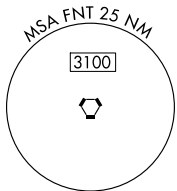
ASR	MALSR	MISSED APPROACH: Climb to 3000 via FNT R-097 to KATTY INT/FNT 10.3 DME and hold.
-----	-------	--

ATIS 133.15	FLINT APP CON ★ 118.8 257.9	FLINT TOWER ★ 126.3 (CTAF) 257.9	GND CON 121.9	CLNC DEL 121.75	UNICOM 122.95
-----------------------	---------------------------------------	--	-------------------------	---------------------------	-------------------------

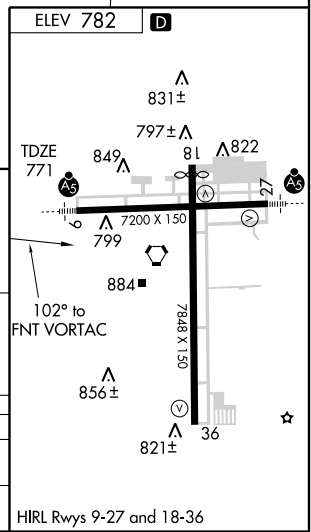
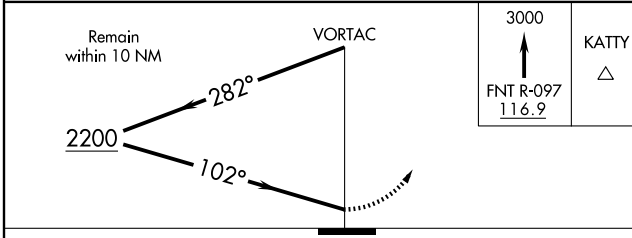


EC-1, 22 OCT 2009 to 19 NOV 2009

EC-1, 22 OCT 2009 to 19 NOV 2009



CAUTION: Brightly lighted parking lot 4000' east of approach end of Rwy 27 can easily be confused for Rwy 27.



CATEGORY	A	B	C	D
S-9	1300/24 529 (500-½)		1300/50 529 (600-1)	1300/60 529 (600-¼)
CIRCLING	1300-1 518 (600-1)		1300-1½ 518 (600-1½)	1340-2 558 (600-2)

HIRL Rwy 9-27 and 18-36

FLINT, MICHIGAN
Orig 09295

42°58'N - 83°45'W

FLINT / BISHOP INTL (FNT) VOR RWY 9