

FLINT, MICHIGAN

AL-618 (FAA)

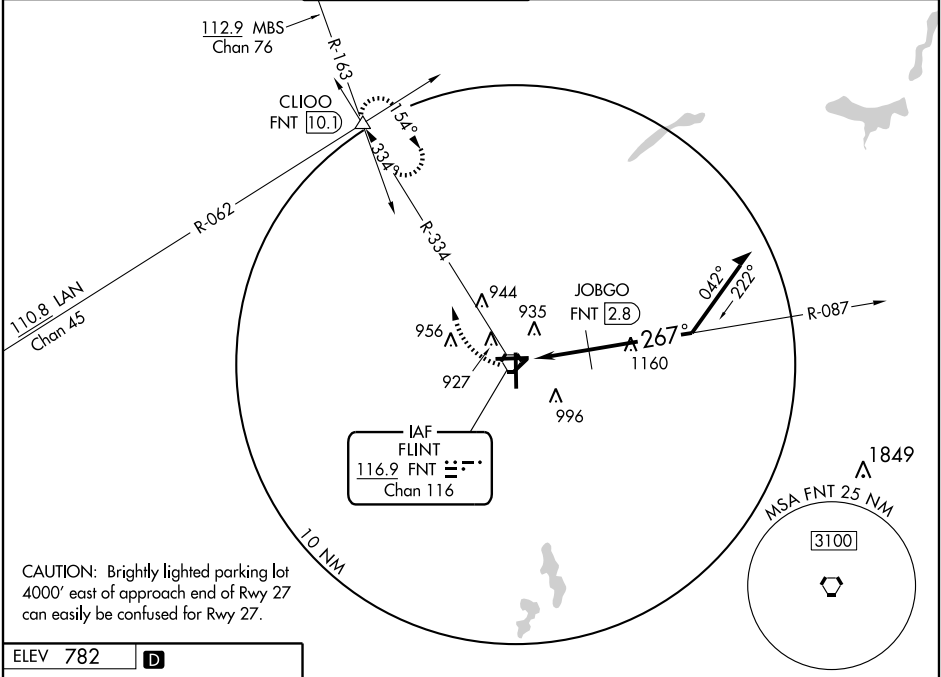
VORTAC FNT 116.9 Chan 116	APP CRS 267°	Rwy Idg TDZE Apt Elev	7200 770 782
--	------------------------	-----------------------------	---

VOR RWY 27

FLINT / BISHOP INTL (F'NT)

<p>ASR</p>	<p>MALSR</p>	<p>MISSED APPROACH: Climbing right turn to 3000 via FNT R-334 to CLIOO INT and hold.</p>			

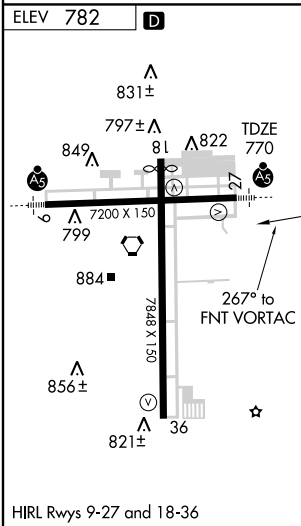
ATIS 133.15	FLINT APP CON ★ 118.8 257.9	FLINT TOWER ★ 126.3 (CTAF) 257.9	GND CON 121.9	CLNC DEL 121.75	UNICOM 122.95
-----------------------	---------------------------------------	--	-------------------------	---------------------------	-------------------------



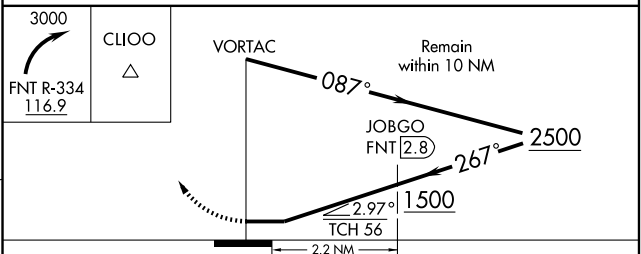
CAUTION: Brightly lighted parking lot 4000' east of approach end of Rwy 27 can easily be confused for Rwy 27.

EC-1, 22 OCT 2009 to 19 NOV 2009

EC-1, 22 OCT 2009 to 19 NOV 2009



FLINT, MICHIGAN
Orig 09295



CATEGORY	A	B	C	D
S-27	1500 - 1/2	730 (800-1/2)	1500 - 1 1/2 730 (800-1 1/2)	1500 - 1 3/4 730 (800-1 3/4)
CIRCLING	1500 - 1	718 (800-1)	1500 - 2 718 (800-2)	1500 - 2 1/4 718 (800-2 1/4)
DME MINIMUMS				
S-27	1260 - 1/2	490 (500-1/2)	1260 - 3/4 490 (500-3/4)	1260 - 1 490 (500-1)
CIRCLING	1280 - 1 498 (500-1)	1300 - 1 518 (600-1)	1300 - 1 1/2 518 (600-1 1/2)	1340-2 558 (600-2)

42°58'N - 83°45'W

FLINT / BISHOP INTL (F'NT) VOR RWY 27