

FLINT, MICHIGAN

AL-618 (FAA)

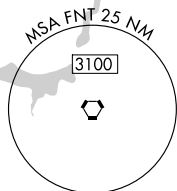
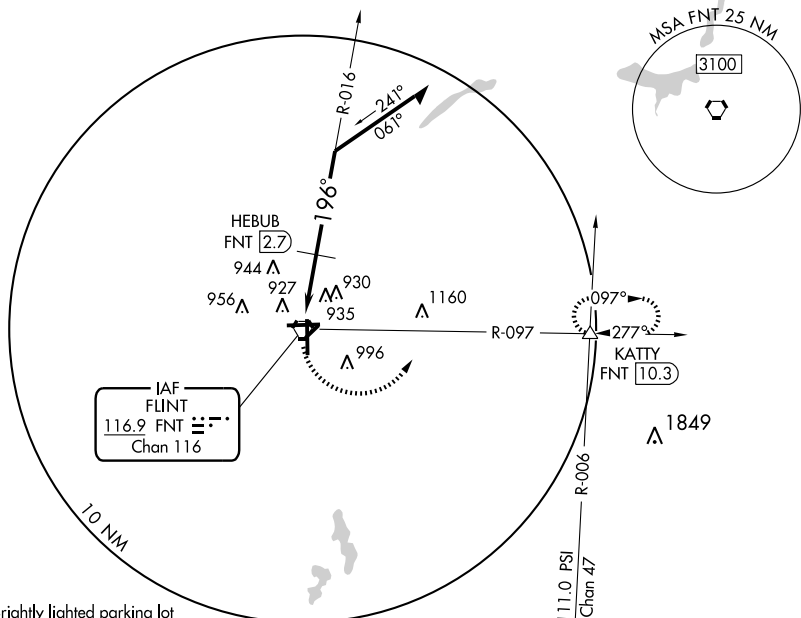
VORTAC FNT 116.9 Chan 116	APP CRS 196°	Rwy Idg 7648 TDZE 779 Apt Elev 782
---	------------------------	---

VOR RWY 18

FLINT / BISHOP INTL (F'NT)

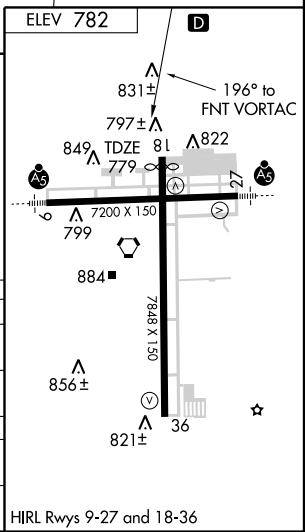
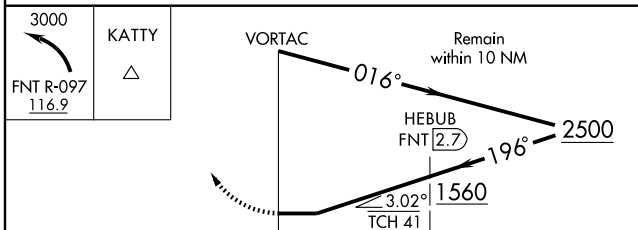
ASR		MISSED APPROACH: Climbing left turn to 3000 via FNT R-097 to KATTY INT and hold.			
ATIS 133.15	FLINT APP CON * 118.8 257.9	FLINT TOWER * 126.3 (CTAF) 257.9	GND CON 121.9	CLNC DEL 121.75	UNICOM 122.95

EC-1, 22 OCT 2009 to 19 NOV 2009



CAUTION: Brightly lighted parking lot 4000' east of approach end of Rwy 27 can easily be confused for Rwy 27.

EC-1, 22 OCT 2009 to 19 NOV 2009



CATEGORY	A	B	C	D
S-18	1560 - 1 781 (800-1)	1560 - 1¼ 781 (800-1¼)	1560 - 2¼ 781 (800-2¼)	1560 - 2½ 781 (800-2½)
CIRCLING	1560 - 1 778 (800-1)	1560 - 1¼ 778 (800-1¼)	1560 - 2¼ 778 (800-2¼)	1560 - 2½ 778 (800-2½)
DME MINIMUMS				
S-18	1300 - 1 518 (600-1)	523 (600-1)	1300-1½ 523 (600-1½)	1300-1¾ 523 (600-1¾)
CIRCLING	1300 - 1 518 (600-1)	1300 - 1 518 (600-1)	1300-1½ 518 (600-1½)	1340-2 558 (600-2)

HIRL Rwy 9-27 and 18-36

FLINT, MICHIGAN
Orig-A 09295

42°58'N - 83°45'W

FLINT / BISHOP INTL (F'NT) VOR RWY 18