

FLINT, MICHIGAN

AL-618 (FAA)

RNAV (GPS) RWY 9

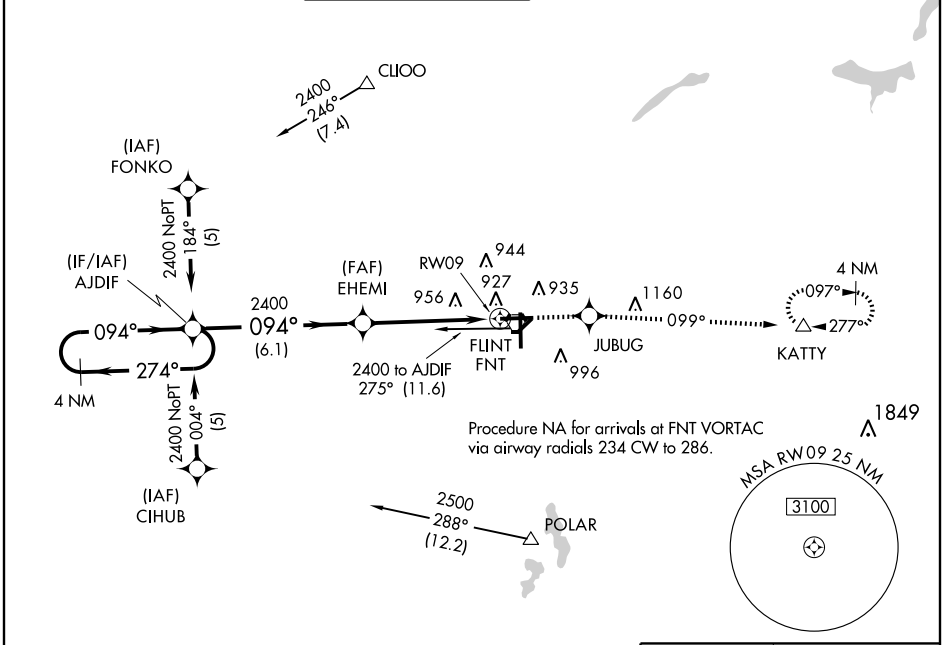
FLINT / BISHOP INTL (F'NT)

WAAS CH 45714 W09A	APP CRS 094°	Rwy Idg TDZE Apt Elev	7200 771 782
--------------------------	------------------------	-----------------------------	---

ASR For uncompensated Baro-VNAV systems, LNAV/VNAV NA below -16°C (4°F) or above 47°C (116°F). DME/DME RNP -0.3 NA.

MALSR MISSED APPROACH: Climb to 3000 direct JUBUG and via track 099° to KATY and hold.

ATIS 133.15	FLINT APP CON * 118.8 257.9	FLINT TOWER * 126.3 (CTAF) 0257.9	GND CON 121.9	CLNC DEL 121.75	UNICOM 122.95
-----------------------	---------------------------------------	---	-------------------------	---------------------------	-------------------------

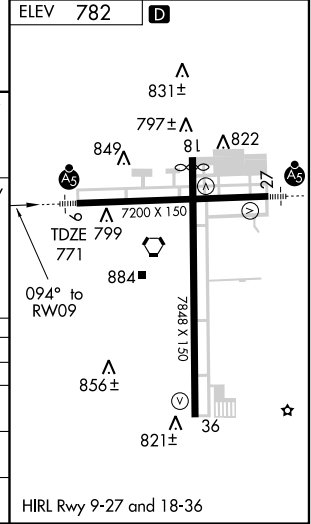


EC-1, 22 OCT 2009 to 19 NOV 2009

EC-1, 22 OCT 2009 to 19 NOV 2009

CAUTION: Brightly lighted parking lot 4000' east of approach end of Rwy 27 can easily be confused for Rwy 27.

4 NM Holding Pattern		AJDIF	EHEMI	3000	JUBUG	TRK 099°	KATY
2400 ← 274° / 094° →		*1.4 NM to RW09		*LNAV only			
GS 3.00° TCH 50		2400		094°			
		6.1 NM		3.5 NM		1.4	
CATEGORY	A	B	C	D			
LPV DA	971/24		200 (200-½)				
LNAV/VNAV DA	1227/50		456 (500-1)				
LNAV MDA	1260/24	489 (500-½)	1260/40	1260/50			
			489 (500-¾)	489 (500-1)			
CIRCLING	1300-1	518 (600-1)	1300-1½	1340-2		558 (600-2)	
			518 (600-1½)				



FLINT, MICHIGAN
Amdt 1 09295

42°58'N - 83°45'W

RNAV (GPS) RWY 9