

FLINT, MICHIGAN

AL-618 (FAA)

RNAV (GPS) RWY 36

FLINT / BISHOP INTL (F'NT)

WAAS CH 65914 W36A	APP CRS 005°	Rwy Idg 7848 TDZE 782 Apt Elev 782
----------------------------------------	------------------------	---------------------------------------------------------------

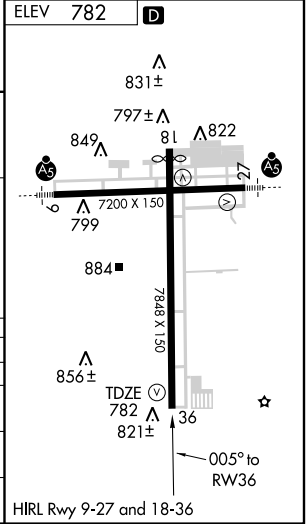
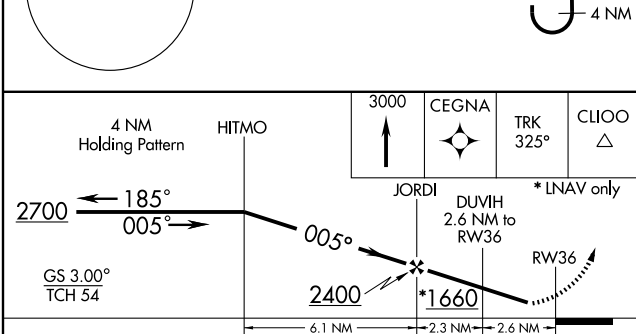
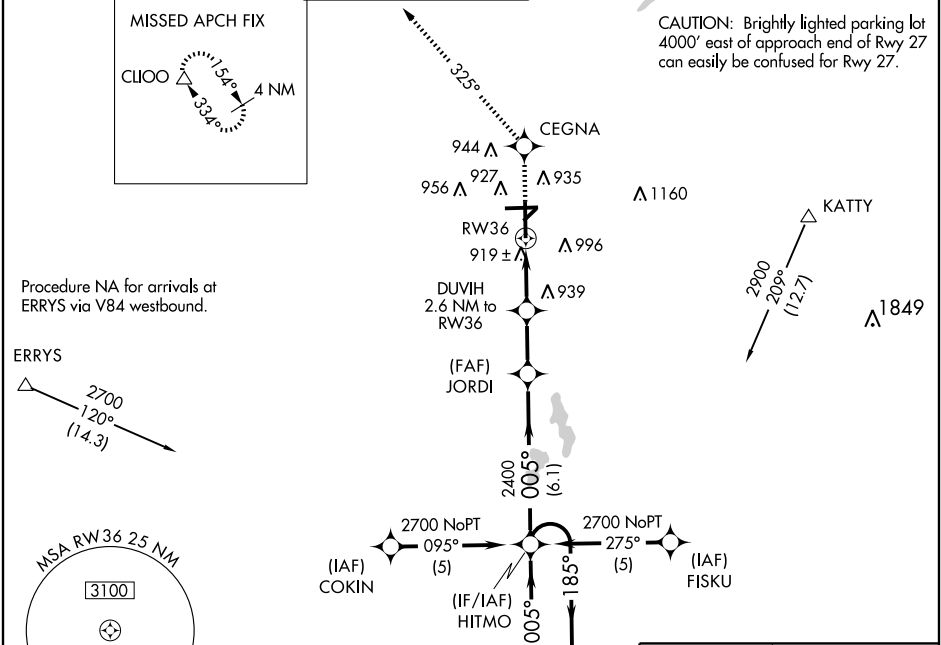
ASR For uncompensated Baro-VNAV systems, LNAV/VNAV NA below -16°C (4°F) or above 47°C (116°F).
DME/DME RNP -0.3 NA. Visibility reduction by helicopters NA.

MISSED APPROACH: Climb to 3000 direct CEGNA and via track 325° to CLIOO and hold.

ATIS 133.15	FLINT APP CON * 118.8 257.9	FLINT TOWER * 126.3 (CTAF) 257.9	GND CON 121.9	CLNC DEL 121.75	UNICOM 122.95
-----------------------	---------------------------------------	--------------------------------------------	-------------------------	---------------------------	-------------------------

EC-1, 22 OCT 2009 to 19 NOV 2009

EC-1, 22 OCT 2009 to 19 NOV 2009



CATEGORY	A	B	C	D
LPV DA		1123-1¼	341 (400-1¼)	
LNAV/VNAV DA		1254-1¾	472 (500-1¾)	
LNAV MDA	1260-1	478 (500-1)	1260-1¼	1260-1½
			478 (500-1¼)	478 (500-1½)
CIRCLING	1300-1	518 (600-1)	1300-1½	1340-2
			518 (600-1½)	558 (600-2)

FLINT, MICHIGAN
Amdt 1 09295

42°58'N - 83°45'W

RNAV (GPS) RWY 36