

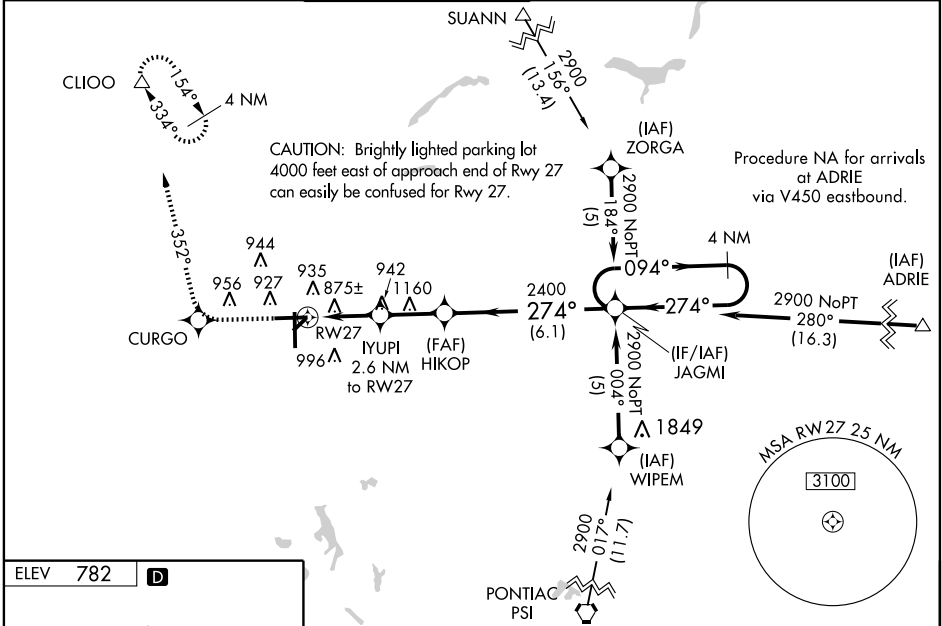
WAAS CH 72810 W27A	APP CRS 274°	Rwy Idg TDZE Apt Elev	7200 770 782
--	------------------------	-----------------------------	---

RNAV (GPS) RWY 27

FLINT / BISHOP INTL (F'NT)

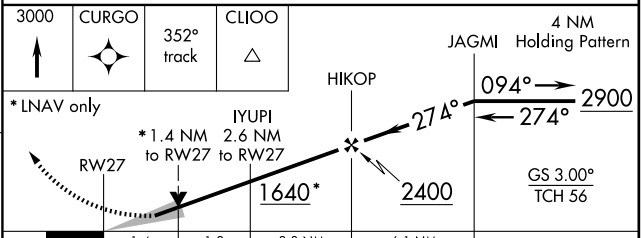
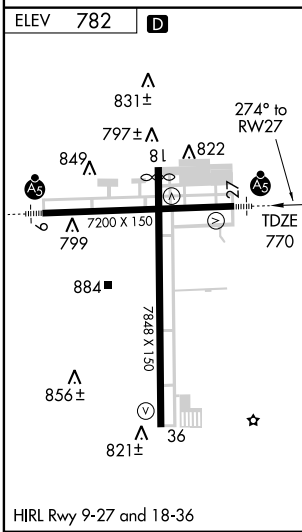
<p>When local altimeter setting not received, use Owosso altimeter setting and increase all DA 47 feet, and all MDA 60 feet; and LNAV visibilities Cat C/D ¼ mile. VDP NA when using Owosso altimeter setting. Baro-VNAV NA when using Owosso altimeter setting. For uncompensated Baro-VNAV systems, LNAV/VNAV NA below -16°C (4°F) or above 47°C (116°F). For inoperative MALSR, increase LPV all Cats visibility to 1¼. DME/DME RNP-0.3 NA.</p>	<p>MALSR</p>	<p>MISSED APPROACH: Climb to 3000 direct CURGO and via 352° track to CLIOO and hold.</p>
	<p>ASR</p>	

ATIS 133.15	FLINT APP CON * 118.8 257.9	FLINT TOWER * 126.3 (CTAF) 257.9	GND CON 121.9	CLNC DEL 121.75	UNICOM 122.95
-----------------------	---------------------------------------	--	-------------------------	---------------------------	-------------------------



EC-1, 22 OCT 2009 to 19 NOV 2009

EC-1, 22 OCT 2009 to 19 NOV 2009



CATEGORY	A	B	C	D
LPV DA		1098 - ¾	328 (400-¾)	
LNAV/VNAV DA		1240 - 1¼	470 (500-1¼)	
LNAV MDA	1260 - ½	490 (500-½)	1260 - ¾ 490 (500-¾)	1260 - 1 490 (500-1)
CIRCLING	1260 - 1 478 (500-1)	1300 - 1 518 (600-1)	1300 - 1½ 518 (600-1½)	1340 - 2 558 (600-2)