

FLINT, MICHIGAN

AL-618 (FAA)

# RNAV (GPS) RWY 18

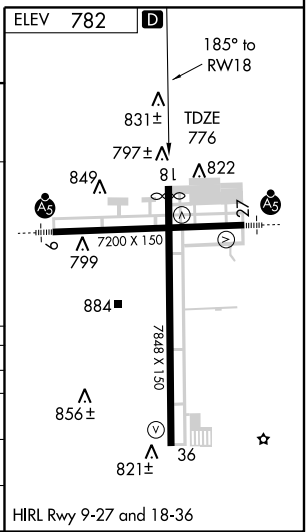
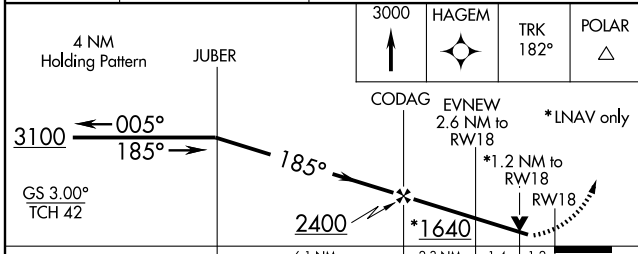
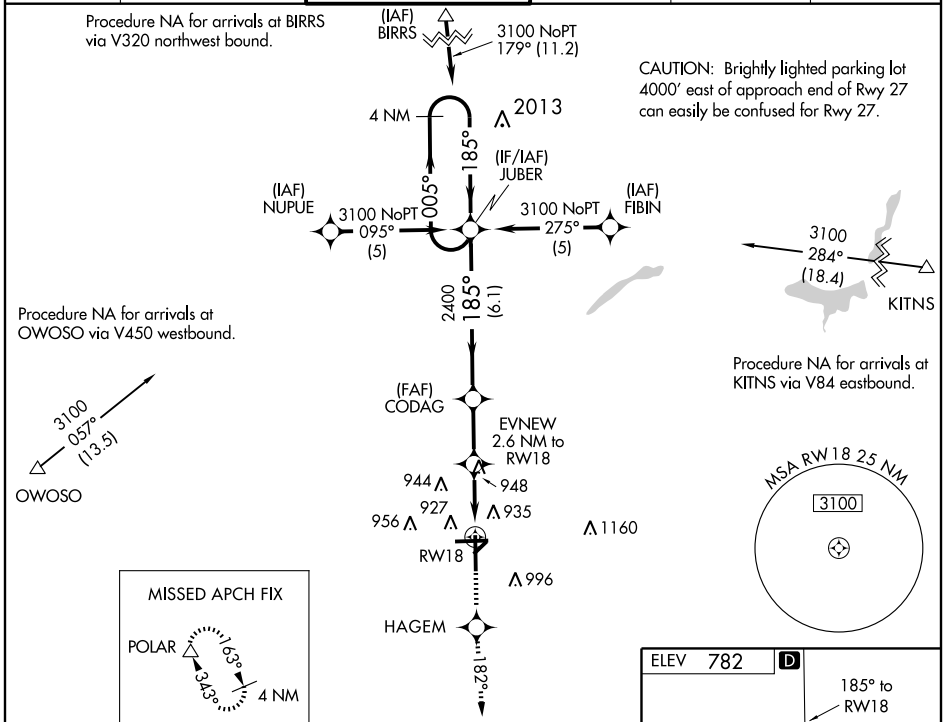
FLINT / BISHOP INTL (F'NT)

WAAS CH <b>99514</b> <b>W18A</b>	APP CRS <b>185°</b>	Rwy Idg TDZE <b>776</b> Apt Elev <b>782</b>	<b>7648</b>
--	------------------------	---	-------------

ASR For uncompensated Baro-VNAV systems, LNAV/VNAV NA below -1.6°C (4°F) or above 47°C (116°F). DME/DME RNP-0.3 NA. Visibility reduction by helicopters NA.

MISSED APPROACH: Climb to 3000 direct HAGEM and via track 182° to POLAR and hold.

ATIS <b>133.15</b>	FLINT APP CON * <b>118.8 257.9</b>	FLINT TOWER * <b>126.3 (CTAF) 0257.9</b>	GND CON <b>121.9</b>	CLNC DEL <b>121.75</b>	UNICOM <b>122.95</b>
-----------------------	---------------------------------------	---	-------------------------	---------------------------	-------------------------



CATEGORY	A	B	C	D
LPV DA		1109-1¼	333 (400-1¼)	
LNAV/VNAV DA		1253-1¾	477 (500-1¾)	
LNAV MDA	1200-1	424 (500-1)	1200-1 ¼	424 (500-1 ¼)
CIRCLING	1300-1	518 (600-1)	1300-1 ½	1340-2 558 (600-2)

FLINT, MICHIGAN  
Amdt 1 09295

42°58'N - 83°45'W

# RNAV (GPS) RWY 18

EC-1, 22 OCT 2009 to 19 NOV 2009

EC-1, 22 OCT 2009 to 19 NOV 2009