

FLINT, MICHIGAN

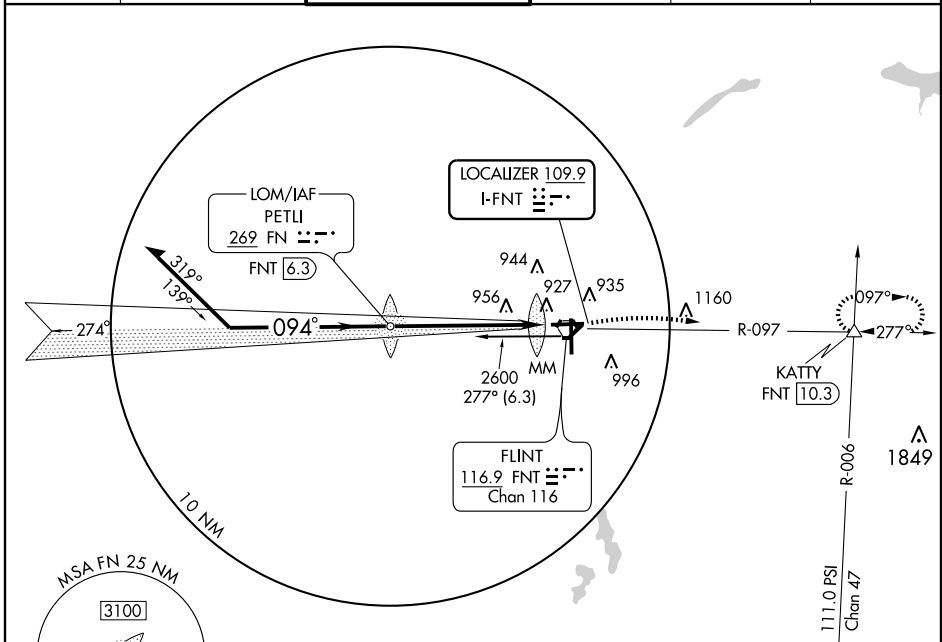
AL-618 (FAA)

# ILS RWY 9

FLINT / BISHOP INTL (F'NT)

LOC I-FNT <b>109.9</b>	APP CRS <b>094°</b>	Rwy Idg <b>7200</b>
		TDZE <b>771</b>
		Apt Elev <b>782</b>

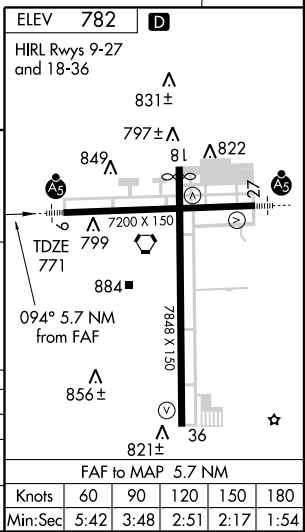
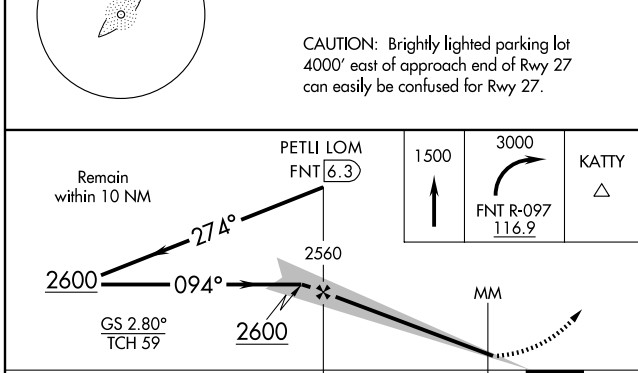
ASR	MALSR	MISSED APPROACH: Climb to 1500, then climbing right turn to 3000 via FNT R-097 to KATTY INT/FNT 10.3 DME and hold.			
ATIS <b>133.15</b>	FLINT APP CON ★ <b>118.8 257.9</b>	FLINT TOWER ★ <b>126.3 (CTAF) 257.9</b>	GND CON <b>121.9</b>	CLNC DEL <b>121.75</b>	UNICOM <b>122.95</b>



EC-1, 22 OCT 2009 to 19 NOV 2009

EC-1, 22 OCT 2009 to 19 NOV 2009

CAUTION: Brightly lighted parking lot 4000' east of approach end of Rwy 27 can easily be confused for Rwy 27.



CATEGORY	A	B	C	D
S-ILS 9	971/24		200 (200-½)	
S-LOC 9	1180/24	409 (400-½)	1180/40	409 (400-¾)
CIRCLING	1280 - 1 498 (500-1)	1300 - 1 518 (600-1)	1300 - 1½ 518 (600-1½)	1340-2 558 (600-2)

FAF to MAP 5.7 NM					
Knots	60	90	120	150	180
Min:Sec	5:42	3:48	2:51	2:17	1:54

FLINT, MICHIGAN  
Amdt 22 09295

42°58'N - 83°45'W

# ILS RWY 9