

FLINT, MICHIGAN

AL-618 (FAA)

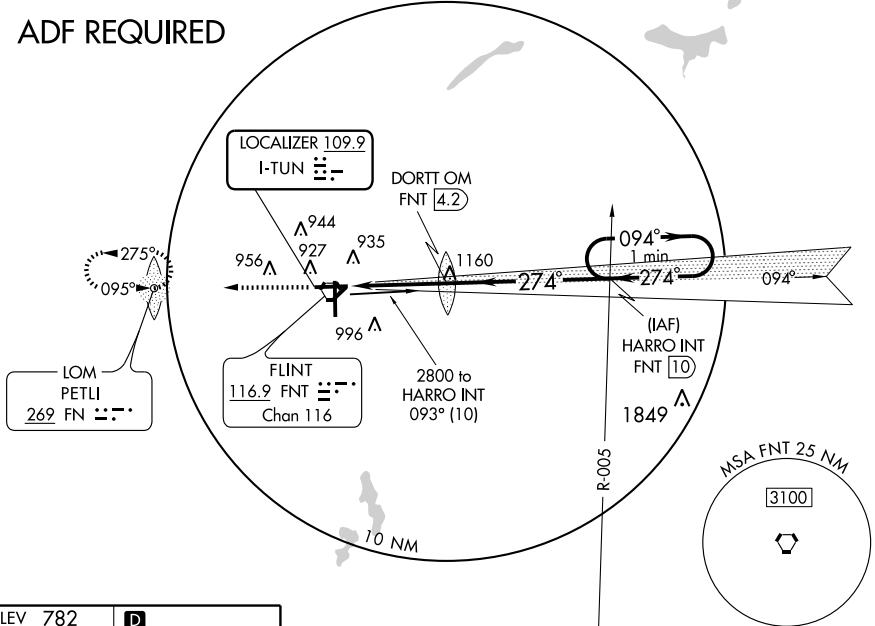
LOC I-TUN <b>109.9</b>	APP CRS <b>274°</b>	Rwy Idg TDZE Apt Elev	<b>7200</b> <b>770</b> <b>782</b>
---------------------------	------------------------	-----------------------------	---

# ILS RWY 27

FLINT / BISHOP INTL (F'NT)

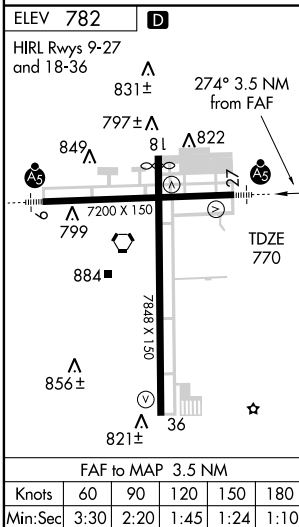
ASR	MALSR	MISSED APPROACH: Climb to 2800 direct FN LOM and hold.			
ATIS <b>133.15</b>	FLINT APP CON ★ <b>118.8 257.9</b>	FLINT TOWER ★ <b>126.3 (CTAF) 257.9</b>	GND CON <b>121.9</b>	CLNC DEL <b>121.75</b>	UNICOM <b>122.95</b>

## ADF REQUIRED

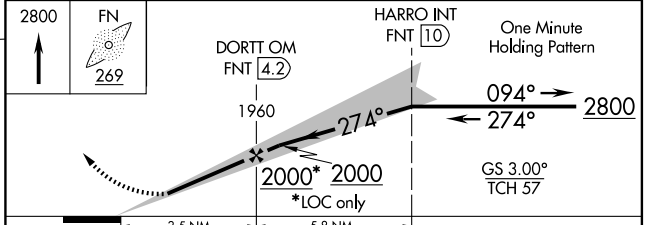


EC-1, 22 OCT 2009 to 19 NOV 2009

EC-1, 22 OCT 2009 to 19 NOV 2009



CAUTION: Brightly lighted parking lot 4000' east of approach end of Rwy 27 can easily be confused for Rwy 27.



CATEGORY	A	B	C	D
S-ILS 27	970-½ 200 (200-½)			
S-LOC 27	1260-½ 490 (500-½)		1260-¾ 490 (500-¾)	1260-1 490 (500-1)
CIRCLING	1280-1 498 (500-1)	1300-1 518 (600-1)	1300-1½ 518 (600-1½)	1340-2 558 (600-2)

FLINT, MICHIGAN  
Amdt 4 09295

42°58'N - 83°45'W

# FLINT / BISHOP INTL (F'NT) ILS RWY 27