

VOR/DME ECG	APP CRS	Rwy ldg	7219
112.5	270°	TDZE	11
Chan 72		Apt Elev	12

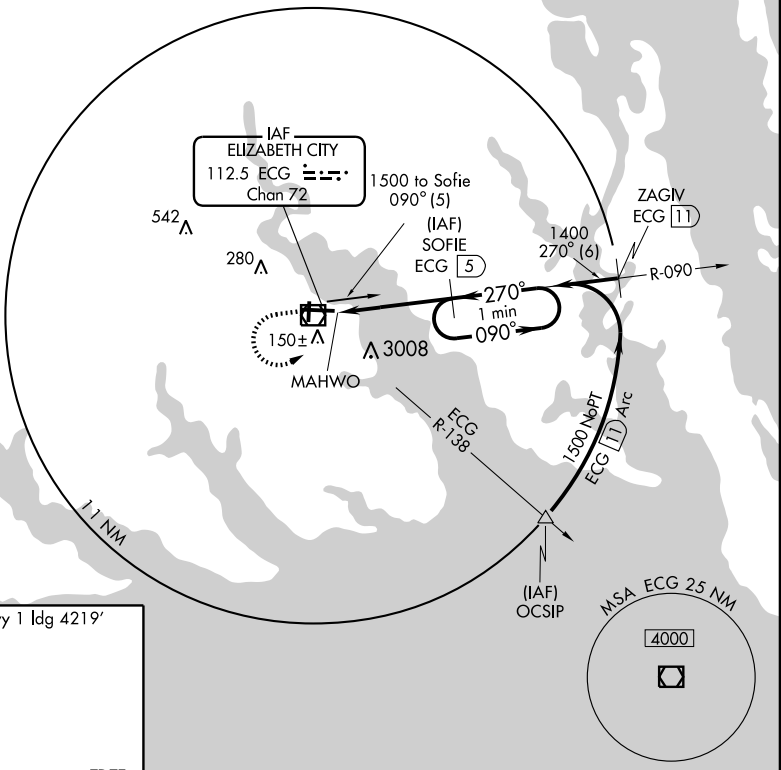
VOR/DME RWY 28

ELIZABETH CITY COAST GUARD AIR STATION/RGNL (ECG)

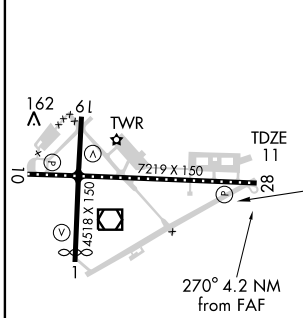
Procedure not authorized when tethered balloon located approximately 2 miles southeast of airport is flying.

MISSED APPROACH: Climb to 1000 then climbing left turn to 1500 via ECG R-090 to SOFIE 5 DME and hold.

ASOS 118.525	NORFOLK APP CON 119.55 269.42	ELIZABETH CITY TOWER* 120.5 (CTAF) 355.6	GND CON 121.9	UNICOM 122.95
------------------------	---	--	-------------------------	-------------------------

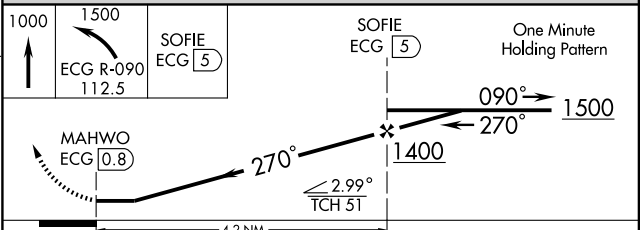


ELEV 12	Rwy l ldg 4219'
---------	-----------------



TDZ/CL Rwy 10
MIRL Rwy 1-19
HIRL Rwy 10-28
REIL Rws 10 and 28

Knots	60	90	120	150	180
Min:Sec					



CATEGORY	A	B	C	D
S-28	360-1 349 (400-1)			360-1¼ 349 (400-1¼)
CIRCLING	520-1	508 (600-1)	520-1½ 508 (600-1½)	640-2 628 (700-2)

VOR/DME RWY 28

SE-2, 22 OCT 2009 to 19 NOV 2009

SE-2, 22 OCT 2009 to 19 NOV 2009