

# RNAV (GPS) RWY 28

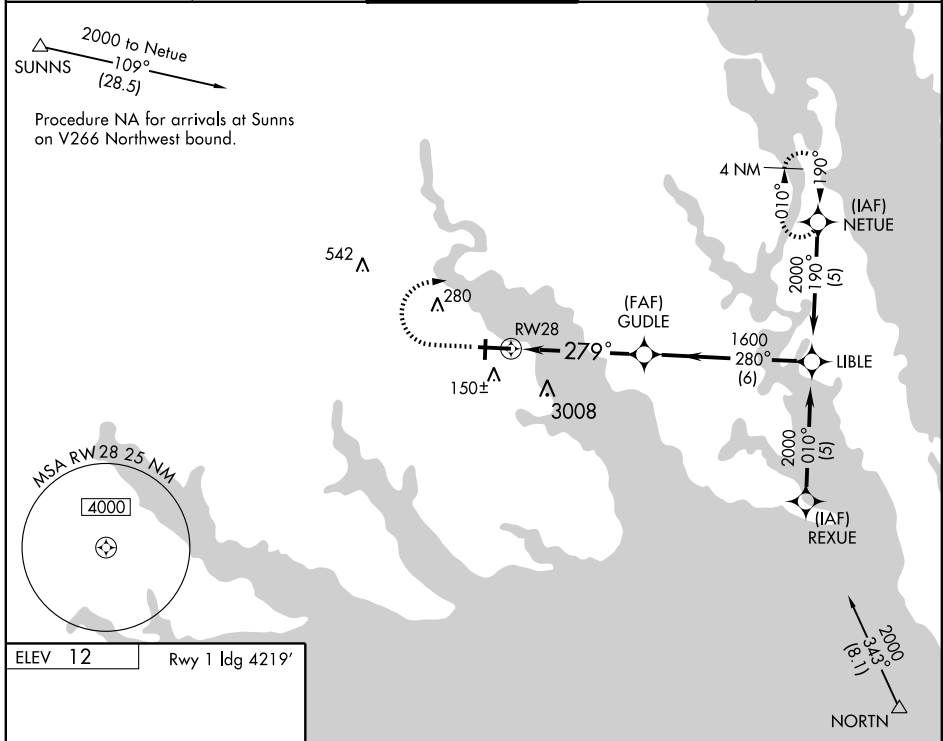
ELIZABETH CITY COAST GUARD AIR STATION/RGNL (ECG)

APP CRS	Rwy Idg	<b>7219</b>
<b>279°</b>	TDZE	<b>11</b>
	Apt Elev	<b>12</b>

**NA** GPS or RNP-0.3 Required. DME/DME RNP-0.3 NA. Procedure not authorized when tethered balloon located approximately 2 miles southeast of airport is flying.

**MISSED APPROACH:** Climb to 800 then climbing right turn to 2000 direct NETUE WP and hold.

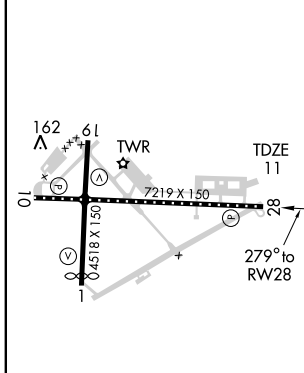
ASOS <b>118.525</b>	NORFOLK APP CON <b>119.55 269.42</b>	ELIZABETH CITY TOWER* <b>120.5 (CTAF) 355.6</b>	GND CON <b>121.9</b>	UNICOM <b>122.95</b>
------------------------	---	--	-------------------------	-------------------------



SE-2, 22 OCT 2009 to 19 NOV 2009

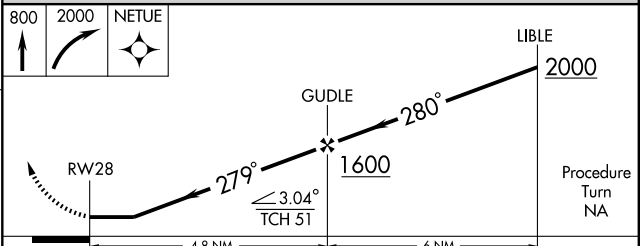
SE-2, 22 OCT 2009 to 19 NOV 2009

ELEV <b>12</b>	Rwy 1 Idg <b>4219°</b>
----------------	------------------------



TDZ/CL Rwy 10  
MIRL Rwy 1-19  
HIRL Rwy 10-28  
REIL Rwy 10 and 28

Procedure NA for arrivals at North on V266 Southeast bound.



CATEGORY	A	B	C	D
LNAV MDA	360-1 349 (400-1)			360-1¼ 349 (400-1¼)
CIRCLING	520-1	508 (600-1)	520-1½ 508 (600-1½)	640-2 628 (700-2)