

WAAS CH <b>65703</b> <b>W10A</b>	APP CRS <b>099°</b>	Rwy Idg <b>7219</b> TDZE <b>11</b> Apt Elev <b>12</b>
--	------------------------	---

# RNAV (GPS) RWY 10

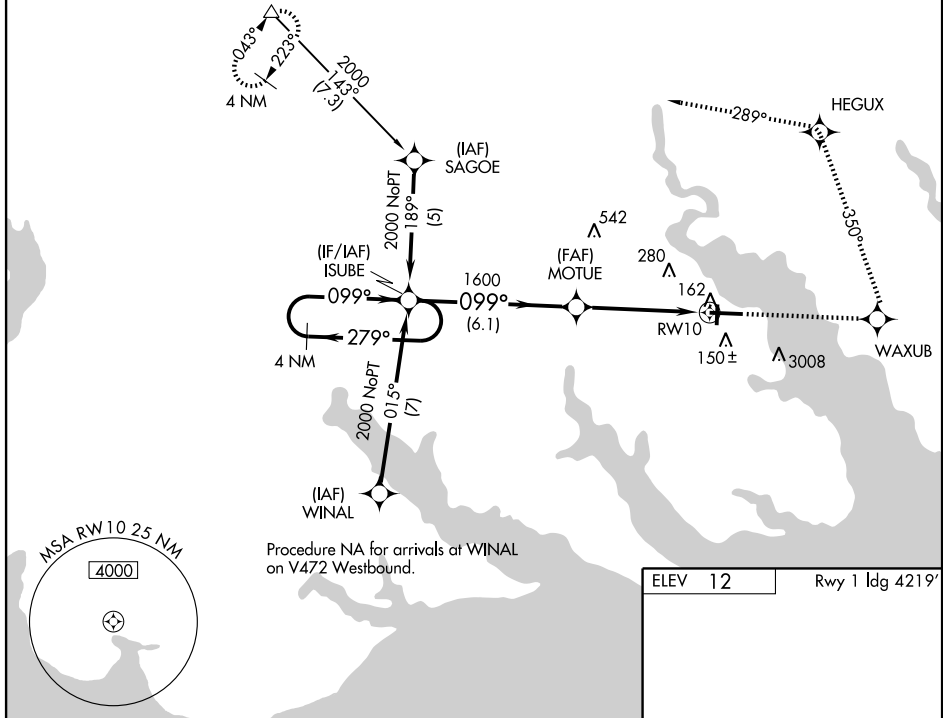
ELIZABETH CITY COAST GUARD AIR STATION/RGNL (ECG)

**⚠** Procedure not authorized when tethered balloon located approximately 2 miles southeast of airport is flying. DME/DME RNP-0.3 NA.  
**⚠** If local altimeter setting not received, use Currituck altimeter setting and increase all DAs to 288 feet; increase all MDAs 40 feet. VDP NA when using Currituck altimeter setting.

MISSED APPROACH: Climb to 2000 direct WAXUB and left turn via 350° track to HEGUX and 289° track to SUNNS and hold.

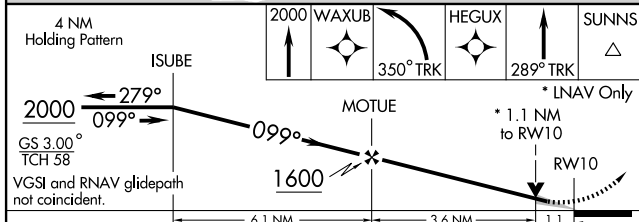
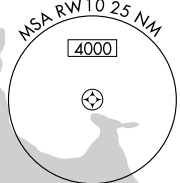
ASOS <b>118.525</b>	NORFOLK APP CON <b>119.55 269.42</b>	ELIZABETH CITY TOWER★ <b>120.5 (CTAF) 355.6</b>	GND CON <b>121.9</b>	UNICOM <b>122.95</b>
------------------------	---	--	-------------------------	-------------------------

Procedure NA for arrivals at SUNNS on V266 Northwest bound.

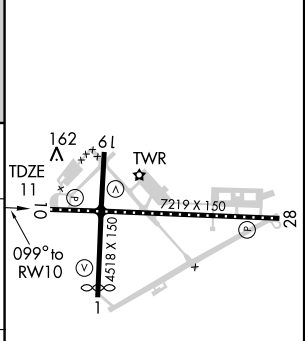


SE-2, 22 OCT 2009 to 19 NOV 2009

SE-2, 22 OCT 2009 to 19 NOV 2009



ELEV 12	Rwy 1 Idg 4219'
---------	-----------------



CATEGORY	A	B	C	D
LPV DA	261-3/4		250 (300-3/4)	
LNAV MDA	420-1	409 (500-1)	420-1 1/4	409 (500-1 1/4)
CIRCLING	480-1	468 (500-1)	480-1 1/2	640-2 628 (700-2)

TDZ/CL Rwy 10  
 MIRA Rwy 1-19  
 HIRL Rwy 10-28  
 REIL Rwy 10 and 28