

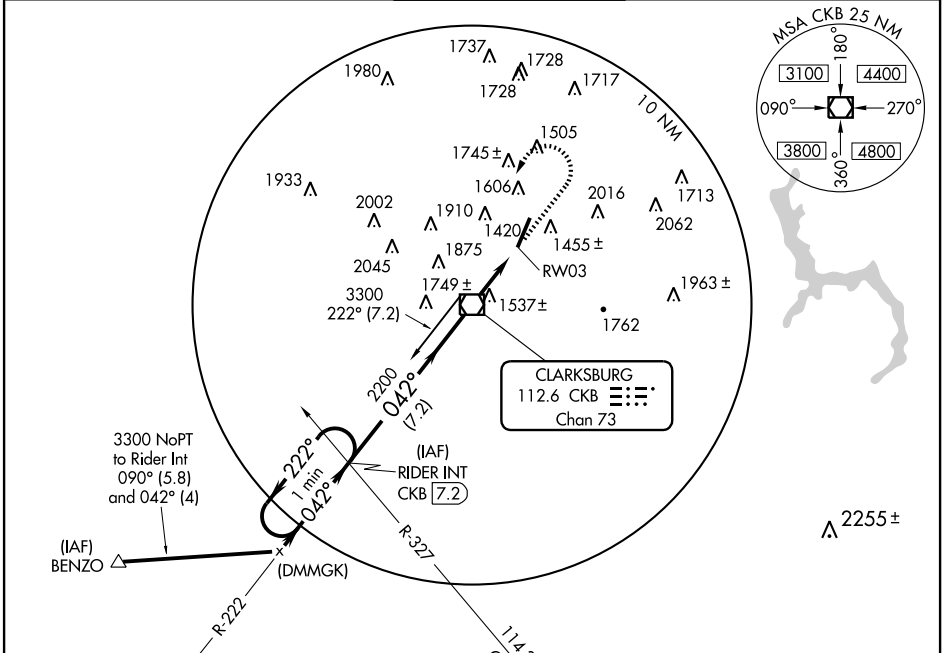
VOR/DME CKB 112.6 Chan 73	APP CRS 042°	Rwy Idg TDZE Apt Elev	7000 1183 1217
---	------------------------	-----------------------------	---

VOR or GPS RWY 3

CLARKSBURG/NORTH CENTRAL WEST VIRGINIA (CKB)

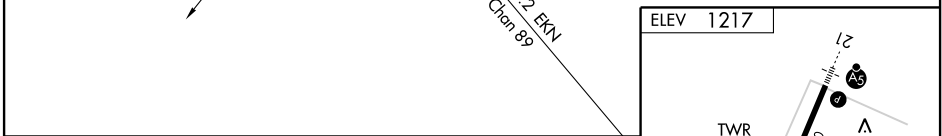
MISSED APPROACH: Climb to 3300, left turn direct CKB VOR/DME, then via CKB R-222 to RIDER Int/CKB 7.2 DME and hold.

ATIS 127.825	CLARKSBURG APP CON* 119.6 269.375	CLARKSBURG TOWER* 126.7 (CTAF) 257.925	GND CON 121.9	UNICOM 123.0
------------------------	---	--	-------------------------	------------------------

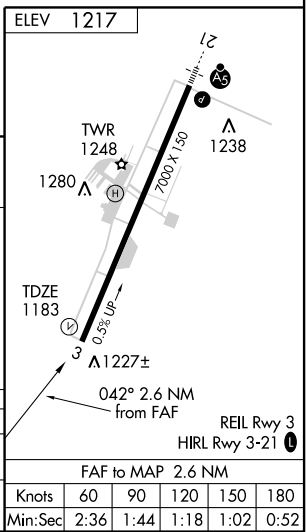


NE-4, 22 OCT 2009 to 19 NOV 2009

NE-4, 22 OCT 2009 to 19 NOV 2009



One Minute Holding Pattern	RIDER INT CKB (7.2)	VOR/DME	CKB 112.6	CKB R-222	RIDER INT
3300	← 222° →	042°	2200	3.42° TCH 59	RW03 CKB (2.6)
		7.2 NM	2.6 NM		



CATEGORY	A	B	C	D
S-3	1860-1	677 (700-1)	1860-2 677 (700-2)	1860-2¼ 677 (700-2¼)
CIRCLING	1920-1	703 (800-1)	1920-2 703 (800-2)	2040-2¾ 823 (900-2¾)