

RNAV (GPS) RWY 21

CLARKSBURG/NORTH CENTRAL WEST VIRGINIA (CKB)

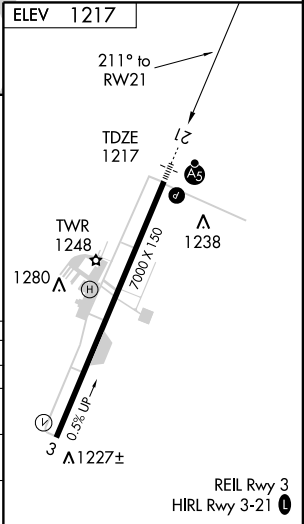
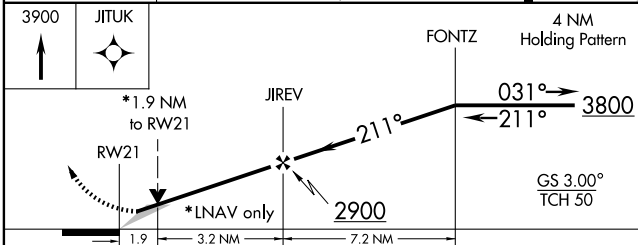
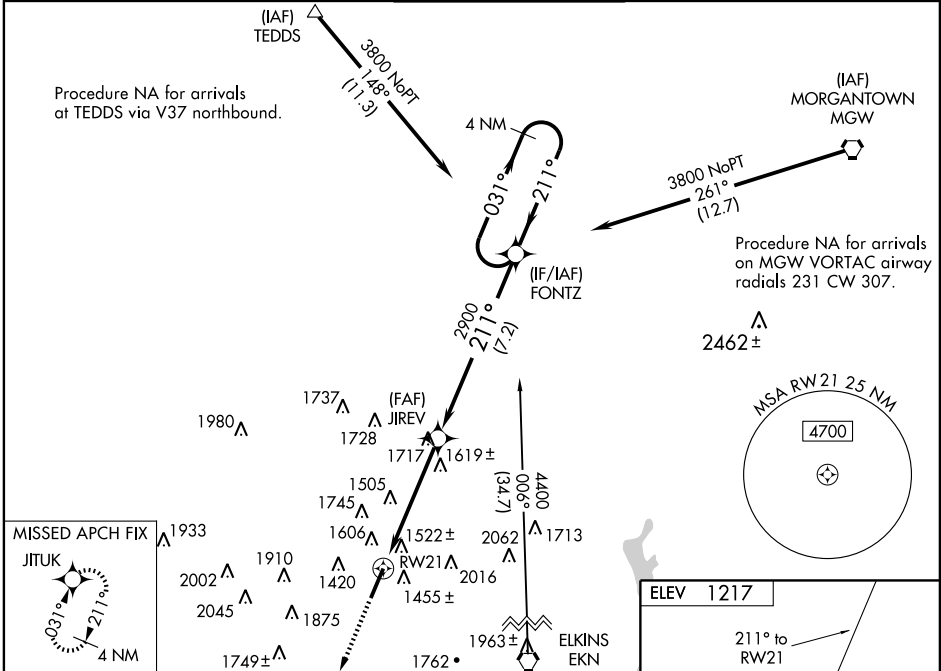
WAAS CH 82504 W21A	APP CRS 211°	Rwy Idg TDZE Apt Elev	7000 1217 1217
--	------------------------	-----------------------------	---

For uncompensated Baro-VNAV systems, procedure NA below -17°C (2°F) or above 46°C (114°F). DME/DME RNP-0.3 NA. VDP NA when using Morgantown altimeter setting. When local altimeter setting not received, use Morgantown altimeter setting and increase all DA 63 feet and all MDA 80 feet, increase LNAV Cat B, C and D visibility ½ mile, and Circling Cats B, C and D visibility ¼ mile. When using Morgantown altimeter setting for inoperative MALSRS, increase LPV visibility all Cats to RVR 5000. LNAV-VNAV NA when using Morgantown altimeter setting.

MALSRS

MISSED APPROACH:
Climb to 3900 direct
JITUK and hold.

ATIS 127.825	CLARKSBURG APP CON * 119.6 269.375	CLARKSBURG TOWER * 126.7 (CTAF) 0 257.925	GND CON 121.9	UNICOM 123.0
------------------------	--	---	-------------------------	------------------------



CATEGORY	A	B	C	D
LPV DA		1417/24	200 (200-½)	
LNAV/VNAV DA		2074-2½	857 (900-2½)	
LNAV MDA	1880/24	663 (700-½)	1880/60 663 (700-1¼)	1880-1½ 663 (700-1½)
CIRCLING	1920-1	703 (800-1)	1920-2 703 (800-2)	2060-2¾ 843 (900-2¾)

NE-4, 22 OCT 2009 to 19 NOV 2009

NE-4, 22 OCT 2009 to 19 NOV 2009