

NIAGARA FALLS, NEW YORK

TACAN RWY 28R

TACAN IAG Chan 47	APCH CRS 286°	Rwy ldg TDZE Arprt Elev	9129 588 589
----------------------	------------------	-------------------------------	--------------------

AL-614 [USAF]

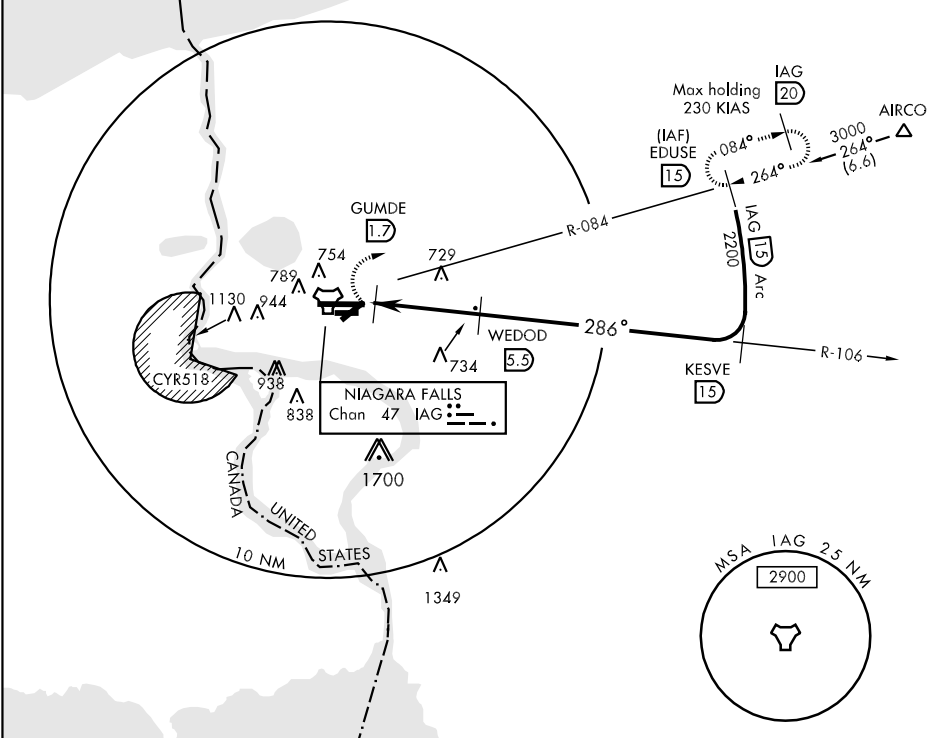
NIAGARA FALLS INTL (K1AG)

▼ * When SSALR inop, increase vis CATS ABCE ½ mile, and CAT D ¼ mile.
 ** Circling NA for CAT E south of runway 10L-28R.



MISSED APPROACH: Climb to 1000 then climbing right turn to 3000 via heading 100° and IAG R-084 to EDUSE 15 DME and hold.

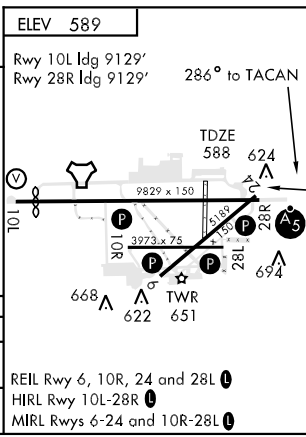
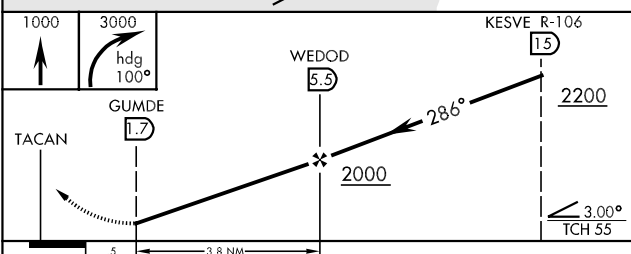
ATIS 120.8 269.4	BUFFALO APP CON 126.5 317.6	NIAGARA TOWER ★ 118.5 (CTAF) 0 349.0	GND CON 121.7 275.8	CLNC DEL 119.25 251.1	UNICOM 122.95
---------------------	--------------------------------	---	------------------------	--------------------------	------------------



NE-2, 22 OCT 2009 to 19 NOV 2009

NE-2, 22 OCT 2009 to 19 NOV 2009

EMERG SAFE ALT 100 NM 5000



CATEGORY	A	B	C	D	E
S-28R*	980/24	392	(400-½)	980/50	392 (400-1)
CIRCLING**	1100-1	511 (600-1)	1100-1½ 511(600-1½)	1360-2½ 771(800-2½)	1360-2¾ 771(800-2¾)

REIL Rwy 6, 10R, 24 and 28L
 HIRL Rwy 10L-28R
 MIRL Rws 6-24 and 10R-28L

NIAGARA FALLS, NEW YORK
 Amdt 4 08325

43°06'N-78°57'W

NIAGARA FALLS INTL (K1AG)
TACAN RWY 28R