

ILS or LOC RWY 28R

NIAGARA FALLS INTL (IAG)

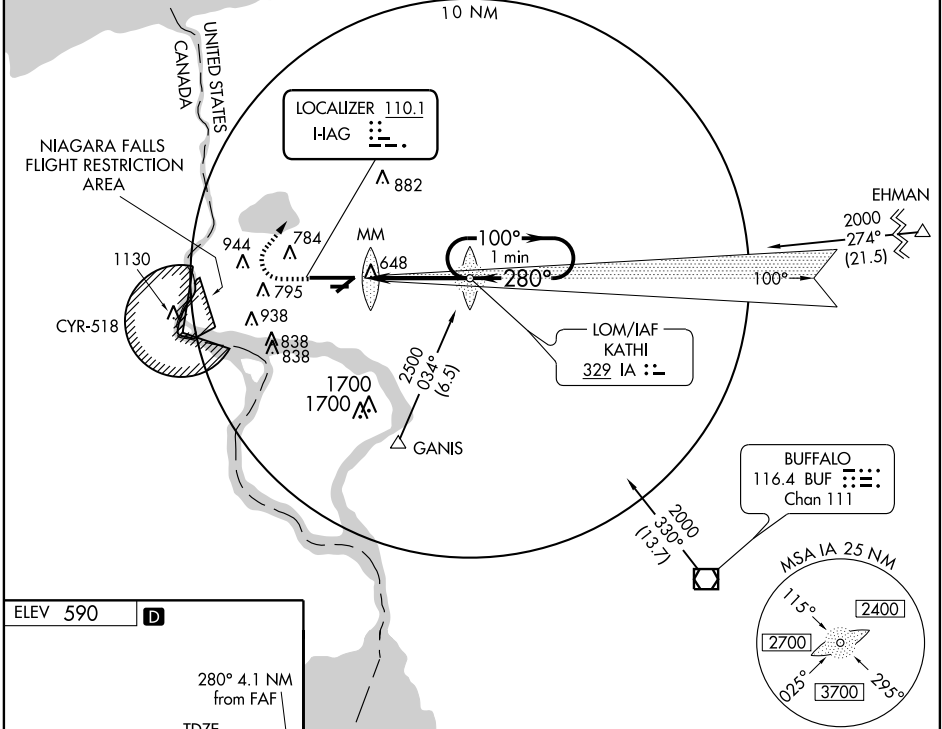
LOC I-IAG 110.1	APP CRS 280°	Rwy ldg TDZE Apt Elev	9129 588 590
---------------------------	------------------------	-----------------------------	---



MISSED APPROACH: Climb to 1200, then climbing right turn to 3200 via heading 050°, then direct IA LOM and hold.

ATIS 120.8 269.4	BUFFALO APP CON 126.5 317.6	NIAGARA TOWER★ 118.5 (CTAF) 349.0	GND CON 121.7 275.8	CLNC DEL 119.25 251.1	UNICOM 122.95
----------------------------	---------------------------------------	---	-------------------------------	---------------------------------	-------------------------

ADF REQUIRED



NE-2, 22 OCT 2009 to 19 NOV 2009

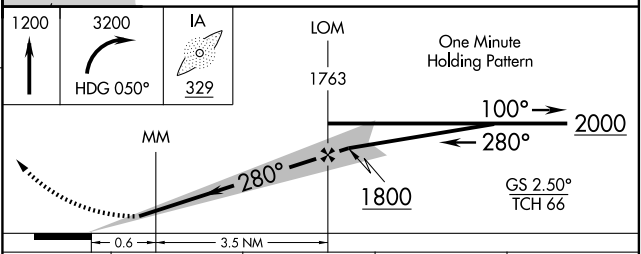
NE-2, 22 OCT 2009 to 19 NOV 2009

ELEV 590 **D**

REIL Rws 6, 10R, 24, and 28L **1**
 HIRL Rwy 10L-28R **1**
 MIRL Rws 6-24 and 10R-28L **1**

FAF to MAP 4.1 NM

Knots	60	90	120	150	180
Min:Sec	4:06	2:44	2:03	1:38	1:22



CATEGORY	A	B	C	D
S-ILS 28R	788/24 200 (200-½)			
S-LOC 28R	900/24 312 (400-½)			900/40 312 (400-¾)
CIRCLING	1100-1 510 (600-1)		1100-1½ 510 (600-1½)	1180-2 590 (600-2)