

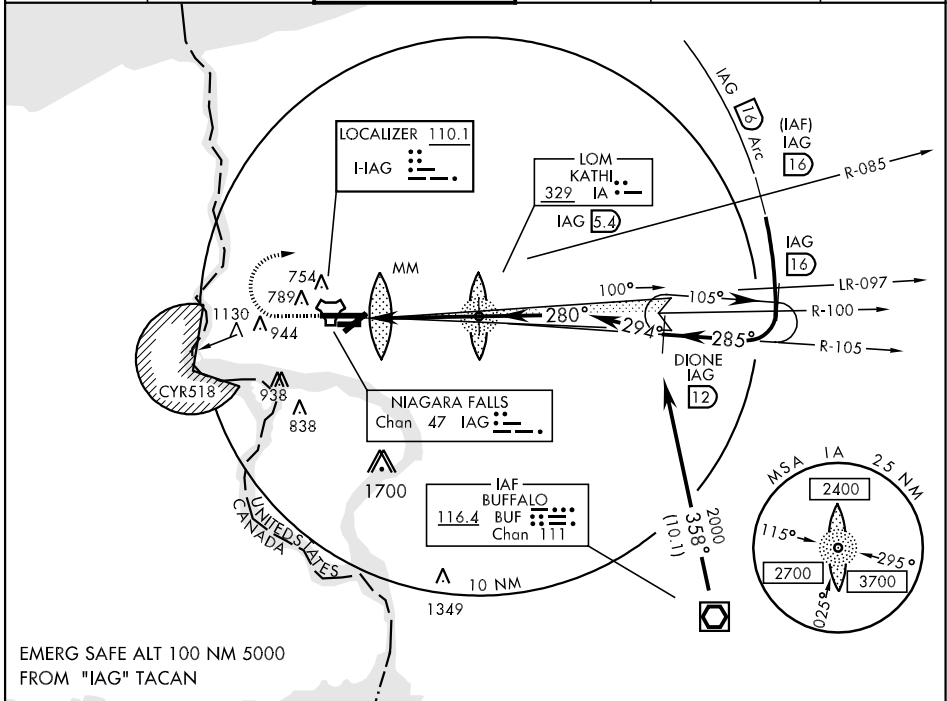
NIAGARA FALLS, NEW YORK

ILS 1 RWY 28R

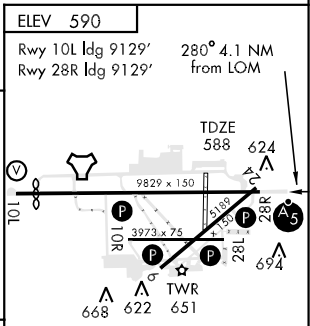
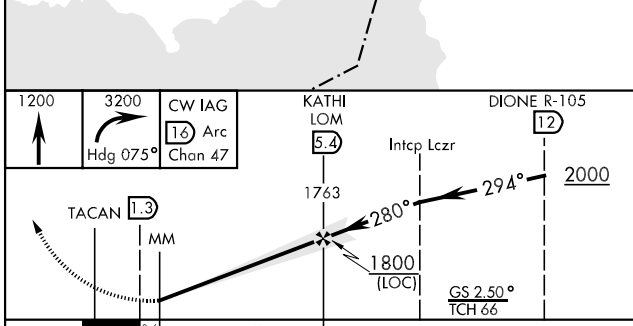
LOC IAG 110.1	APP CRS 280°	Rwy Idg TDZE Arpt Elev 9129 588 590	AL-614 [USAF]	NIAGARA FALLS INTL (KIAG)
------------------	-----------------	--	---------------	---------------------------

MISSED APPROACH: Climb to 1200 then climbing right turn to 3200 via heading 075° to intercept and proceed CW on 16 DME Arc then via IAG R-105 to DIONE/IAG 12 DME and hold.

ATIS 120.8 269.4	BUFFALO APP CON 126.5 317.6	NIAGARA TOWER ★ 118.5 (CTAF) 0 349.0	GND CON 121.7 275.8	CLNC DEL 119.25 251.1	UNICOM 122.95
---------------------	--------------------------------	---	------------------------	--------------------------	------------------



EMERG SAFE ALT 100 NM 5000
FROM "IAG" TACAN



CATEGORY	A	B	C	D
S-ILS 28R	788/24	200		(200-½)
S-LOC 28R	900/24	312	(400-½)	900/40 312 (400-¾)
CIRCLING	1100-1 510	(600-1)	1100-1½ 510 (600-1½)	1180-2 590 (600-2)

REIL Rwy 6, 10R, 24 and 28L					
HIRL Rwy 10L-28R					
MIRL Rwys 6-24 and 10R-28L					
LOC FAF to MAP 4.1 NM					
Knots	60	90	120	150	180
Min:Sec	4:06	2:44	2:03	1:38	1:22

NIAGARA FALLS, NEW YORK 43°06'N-78°57'W NIAGARA FALLS INTL (KIAG)

ILS 1 RWY 28R

Amdt 3 08325

NE-2, 22 OCT 2009 to 19 NOV 2009

NE-2, 22 OCT 2009 to 19 NOV 2009