

APP CRS 172°	Rwy Idg	2864
	Rwy Idg (night only)	2824
	TDZE	6
	Apt Elev	7

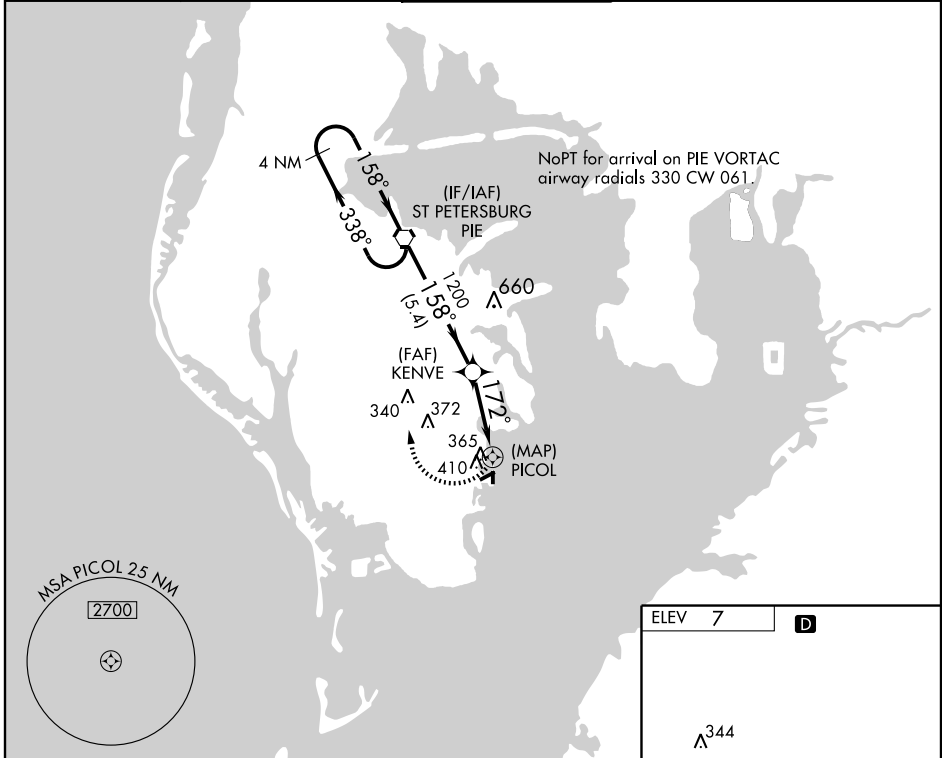
RNAV (GPS) RWY 18

ST. PETERSBURG/ ALBERT WHITTED (SPG)

▼ DME/DME RNP-0.3 NA. Visibility reduction by helicopters NA. When local altimeter setting not received, use Tampa Intl altimeter setting and increase all MDA 40 feet, and Circling Cat. B visibility ¼ mile. VDP NA with Tampa Intl altimeter setting.

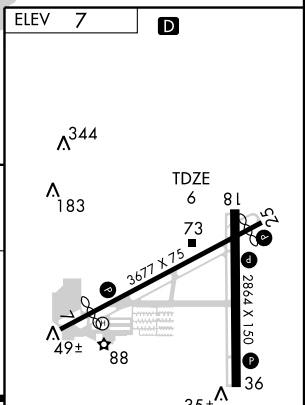
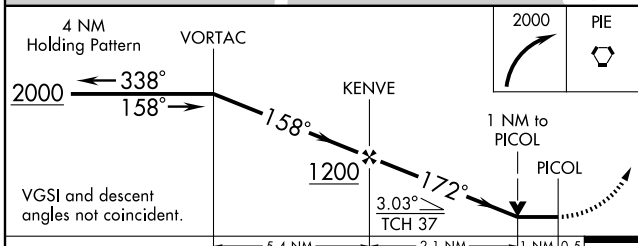
▲ MISSED APPROACH: Climbing right turn to 2000 direct PIE VORTAC and hold.

ASOS 118.875	TAMPA APP CON 119.65 316.05 (EAST) 125.3 316.05 (WEST)	ALBERT WHITTED TOWER * 127.4 (CTAF) 0 257.6	GND CON 121.8	UNICOM 122.95
------------------------	--	---	-------------------------	-------------------------



SE-3, 22 OCT 2009 to 19 NOV 2009

SE-3, 22 OCT 2009 to 19 NOV 2009



CATEGORY	A	B	C	D
LNVA MDA	680-1 674 (700-1)		NA	
CIRCLING	720-1 713 (800-1)		NA	

MIRL Rwy 7-25
 MIRL Rwy 18-36
 REIL Rwys 18, 25 and 36