

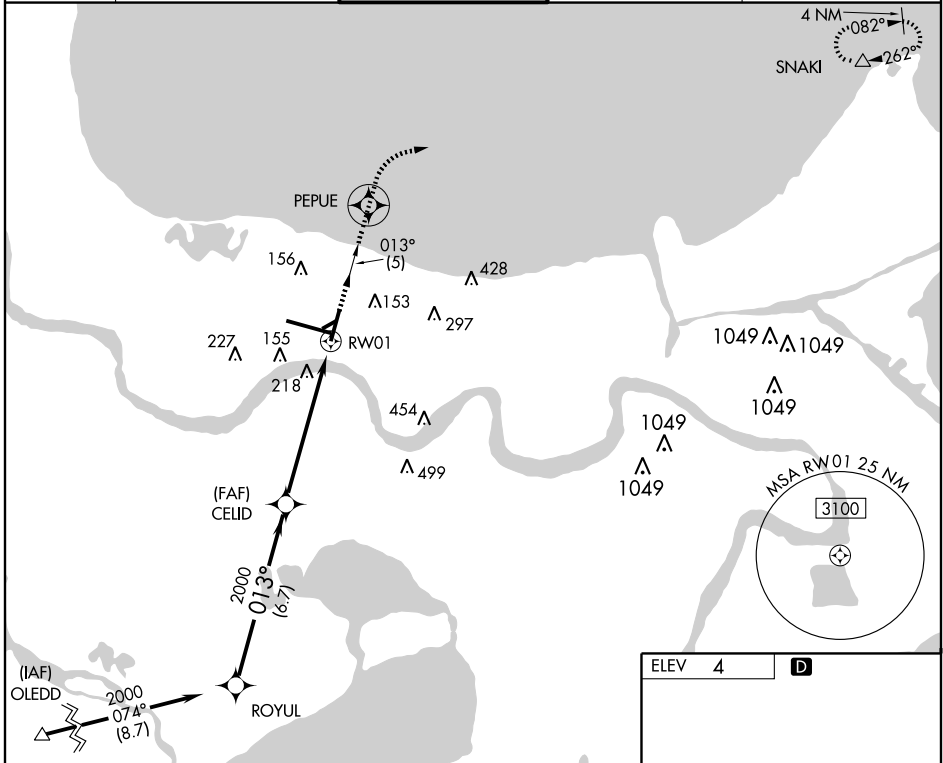
RNAV (GPS) RWY 1

NEW ORLEANS/ LOUIS ARMSTRONG NEW ORLEANS INTL (MSY)

APP CRS 013°	Rwy Idg 7001 TDZE 3 Apt Elev 4
------------------------	---

<p>NA GPS or RNP-0.3 Required. DME/DME RNP-0.3 NA. ASR BARO/VNAV NA below -1.5°C (5°F).</p>	<p>MISSED APPROACH: Climb to 3000 via 013° course to PEPUE then right turn direct SNAKI and hold.</p>
--	--

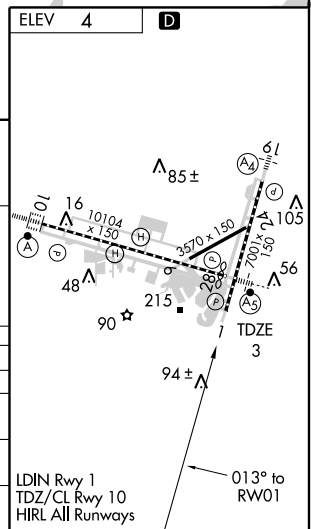
ATIS 127.55	NEW ORLEANS APP CON 123.85 256.9	NEW ORLEANS TOWER 119.5 254.3	GND CON 121.9 273.525	CLNC DEL 127.2
-----------------------	--	---	---------------------------------	--------------------------



SC-4, 22 OCT 2009 to 19 NOV 2009

SC-4, 22 OCT 2009 to 19 NOV 2009

	ROYUL	CELID	3000	PEPUE	SNAKI
			↑ CRS 013°	⊙	△
	<p>Procedure Turn NA</p> <p>2000 — 013° —> 2000</p>		<p>* 1.3 NM to RW01</p> <p>* LNAV only.</p>		
	6.7 NM		4.7 NM		1.3 NM
CATEGORY	A	B	C	D	
GLS/PA DA	NA				
LNAV/VNAV DA	480-1¾ 477 (500-1¾)				
LNAV MDA	480/50	477 (500-1)	480/60 477 (500-1¾)	480-1½ 477 (500-1½)	
CIRCLING	520-1¾ 516 (600-1¾)		580-2 576 (600-2)		



RNAV (GPS) RWY 1