

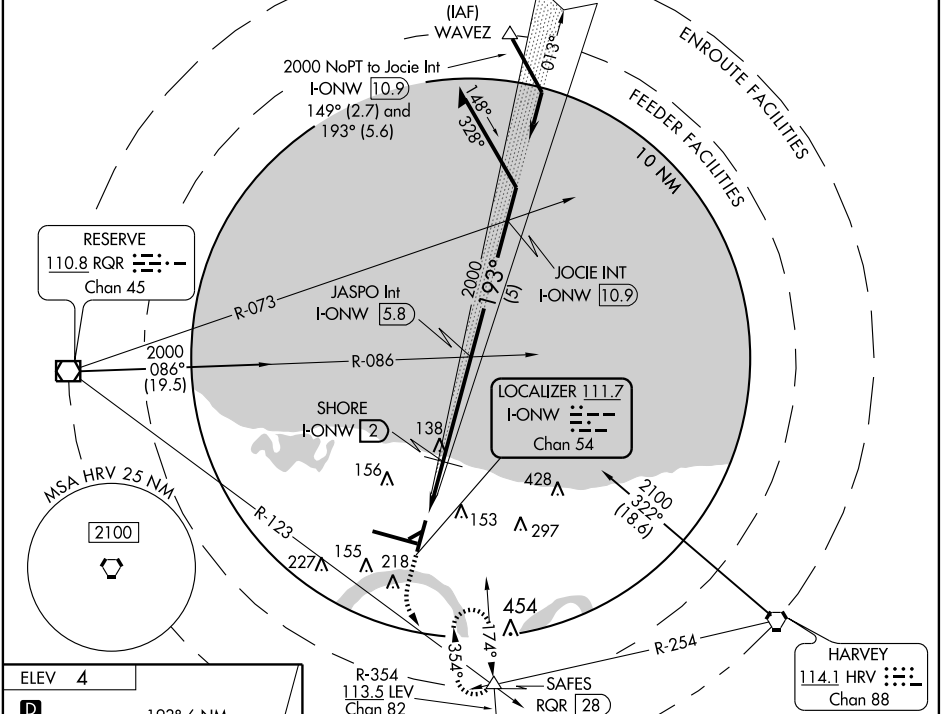
LOC RWY 19

NEW ORLEANS/ LOUIS ARMSTRONG NEW ORLEANS INTL (MSY)

LOC I-ONW 111.7 Chan 54	APP CRS 193°	Rwy Idg TDZE Apt Elev	7001 0 4
---	------------------------	-----------------------------	-------------------------------------

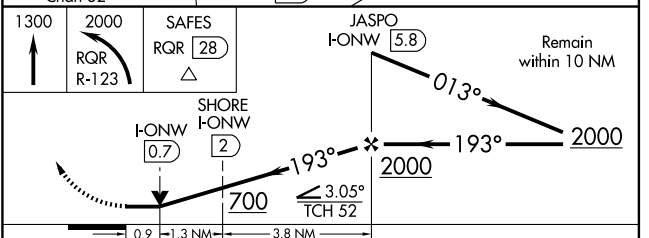
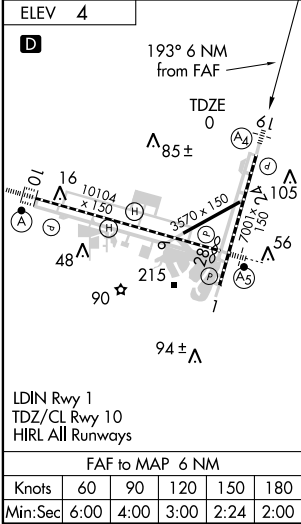
ASR Inoperative table does not apply to S-LOC 19 (without SHORE fix) Cat C. **MALS** (A4) = 3-5- MISSED APPROACH: Climb to 1300, then climbing left turn to 2000 via RQR R-123 to SAFES Int and hold.

ATIS 127.55	NEW ORLEANS APP CON 123.85 256.9	NEW ORLEANS TOWER 119.5 254.3	GND CON 121.9 273.525	CLNC DEL 127.2
-----------------------	--	---	---------------------------------	--------------------------



SC-4, 22 OCT 2009 to 19 NOV 2009

SC-4, 22 OCT 2009 to 19 NOV 2009



CATEGORY	A	B	C	D
S-LOC 19	700/40	700 (700-34)	700-2 700 (700-2)	700-2¼ 700 (700-2¼)
CIRCLING	700-1	696 (700-1)	700-2 696 (700-2)	700-2¼ 696 (700-2¼)
SHORE FIX MINIMUMS				
S-LOC 19	340/40	340 (400-34)		340/50 340 (400-1)
CIRCLING	520-1	516 (600-1)	520-1½ 516 (600-1½)	580-2 576 (600-2)

LOC RWY 19