

# ILS RWY 10 (CAT II)

NEW ORLEANS/LOUIS ARMSTRONG NEW ORLEANS INTL (MSY)

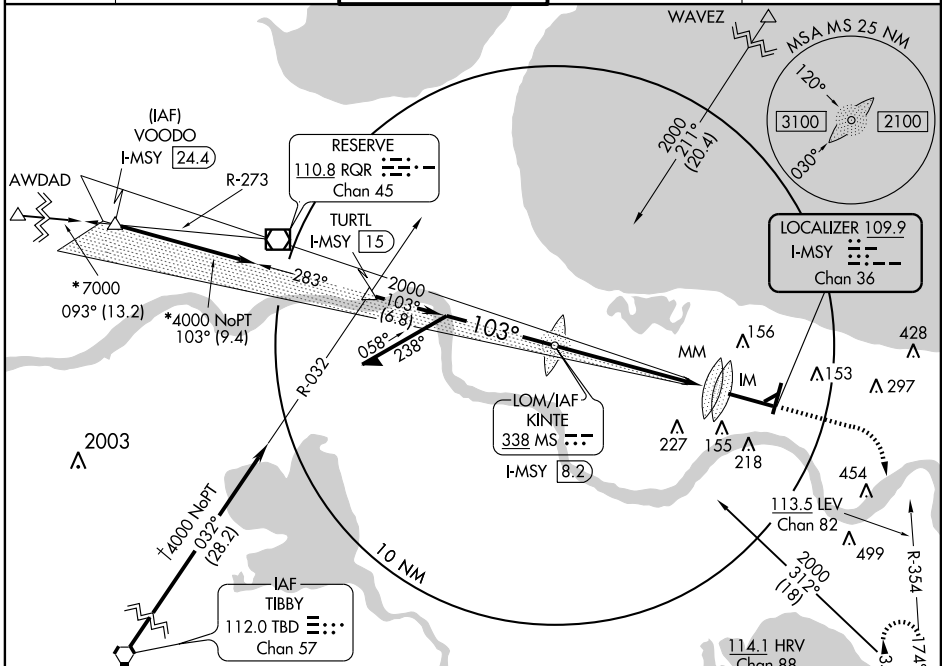
LOC I-MSY <b>109.9</b> Chan <b>36</b>	APP CRS <b>103°</b>	Rwy Idg <b>10104</b> TDZE <b>4</b> Apt Elev <b>4</b>
---	------------------------	--

**ASR** #49 MSL pole located 793 feet right of Rwy 10 centerline.

ALS F2

**MISSED APPROACH:** Climb to 800, then climbing right turn to 2000 via heading 158° and LEV R-354 to SAFES Int/LEV 38.5 DME and hold. #

ATIS <b>127.55</b>	NEW ORLEANS APP CON <b>123.85 256.9</b>	NEW ORLEANS TOWER <b>119.5 254.3</b>	GND CON <b>121.9 273.525</b>	CLNC DEL <b>127.2</b>
-----------------------	--	---	---------------------------------	--------------------------

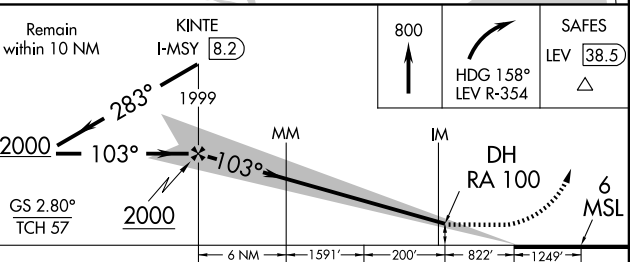
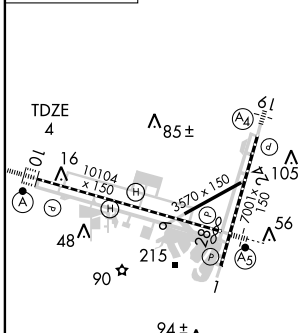


SC-4, 22 OCT 2009 to 19 NOV 2009

SC-4, 22 OCT 2009 to 19 NOV 2009

ELEV 4	<b>D</b>
--------	----------

NOTE: †2300 with ATC approval.  
NOTE: \*2000 with ATC approval.



CATEGORY	A	B	C	D
S-ILS 10		104/12	100 RA 100	

**CATEGORY II ILS - SPECIAL AIRCREW & AIRCRAFT CERTIFICATION REQUIRED**