

TERRE HAUTE, INDIANA

AL-608 (FAA)

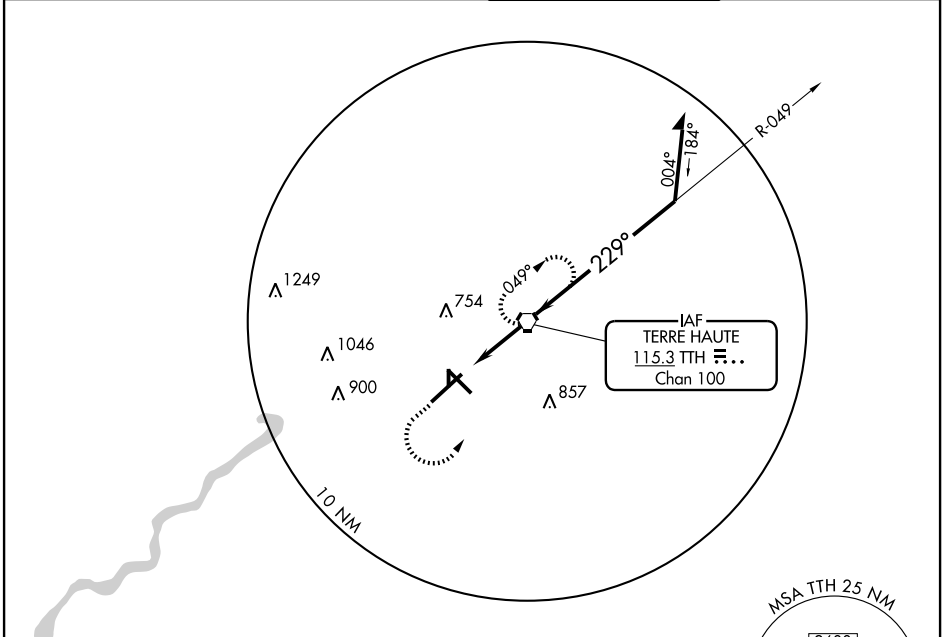
VOR RWY 23

TERRE HAUTE INTL-HULMAN FIELD (HUF)

VORTAC TTH 115.3 Chan 100	APP CRS 229°	Rwy Idg TDZE Apt Elev	9020 583 589
---	------------------------	-----------------------------	---

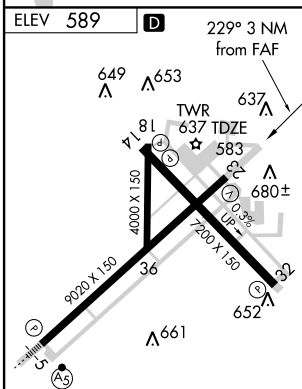
<p>When local altimeter setting not received, use Paris, IL altimeter setting and increase all MDA 80 feet and S-23 Cats. C/D visibilities ¼ mile.</p>	<p>MISSED APPROACH: Climb to 2300 then left turn direct TTH VORTAC and hold.</p>
--	--

<p>ATIS 127.5 284.4</p>	<p>HULMAN APP CON ★ 125.45 339.8</p>	<p>HULMAN TOWER 118.3 239.0</p>	<p>GND CON 121.6 348.6</p>
------------------------------------	---	--	---------------------------------------



EC-2, 22 OCT 2009 to 19 NOV 2009

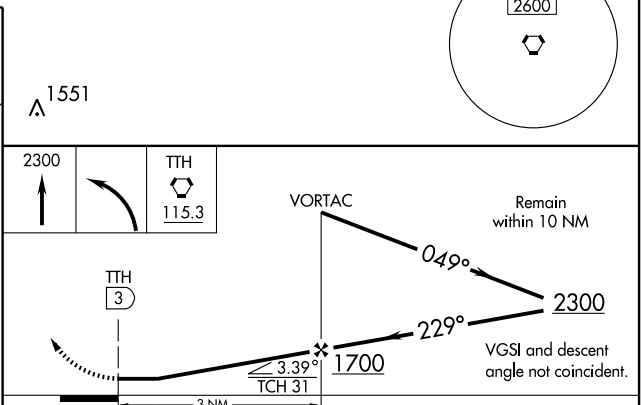
EC-2, 22 OCT 2009 to 19 NOV 2009



MIRL Rwy 18-36
REIL Rwys 14, 18, 23, 32 and 36
HIRL Rwys 5-23 and 14-32

FAF to MAP 3 NM

Knots	60	90	120	150	180
Min:Sec	3:00	2:00	1:30	1:12	1:00



CATEGORY	A	B	C	D
S-23	980-1	397 (400-1)		980-1¼ 397 (400-1¼)
CIRCLING	1020-1 431 (500-1)	1040-1 451 (500-1)	1040-1½ 451 (500-1½)	1140-2 551 (600-2)

TERRE HAUTE, INDIANA
Amdt 20A 09295

39°27'N - 87°18'W

TERRE HAUTE INTL-HULMAN FIELD (HUF)
VOR RWY 23