

# RNAV (GPS) RWY 5

TERRE HAUTE INTL-HULMAN FIELD (HUF)

WAAS CH <b>82109</b> <b>W05A</b>	APP CRS <b>049°</b>	Rwy Idg <b>9020</b> TDZE <b>573</b> Apt Elev <b>589</b>
--	------------------------	---

For inoperative MALS, increase LPV all Cats visibility to RVR 5000 and LNAV Cat D visibility to RVR 6000. For uncompensated Baro-VNAV systems, LNAV/VNAV NA below -16°C (4°F) or above 47°C (116°F). DME/DME RNP-0.3 NA.

▼ VDP and Baro-VNAV NA when using Paris altimeter setting. When local altimeter setting not received, use Paris altimeter setting and increase all DA 61 ft., LPV all Cats visibility to RVR 4000 and LNAV/VNAV all Cats visibility to RVR 5000, increase all MDA 80 ft. and LNAV Cat C visibility to RVR 4000. For inoperative MALS, when using Paris altimeter setting, increase LPV all Cats visibility to RVR 6000.

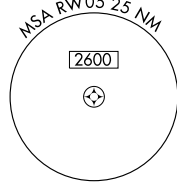
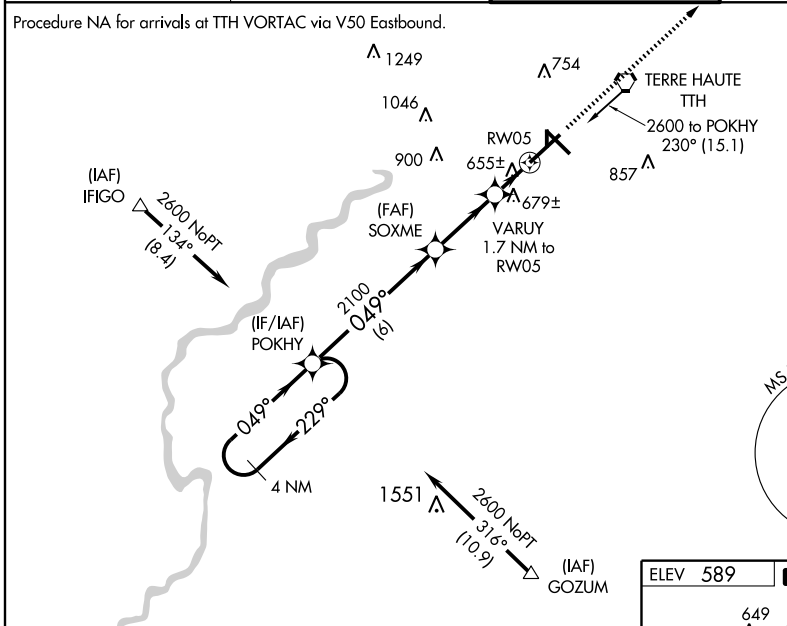
MALS  
ASR  
MISSED APPROACH:  
Climb to 2400 direct IPEDY and hold.

ATIS  
**127.5 284.4**

HULMAN APP CON ★  
**125.45 339.8**

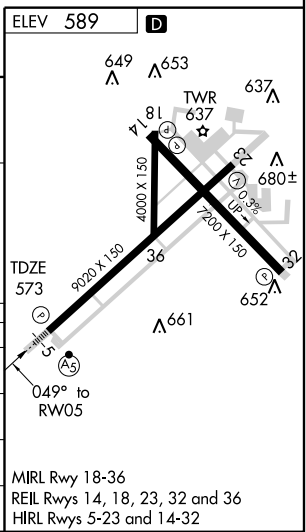
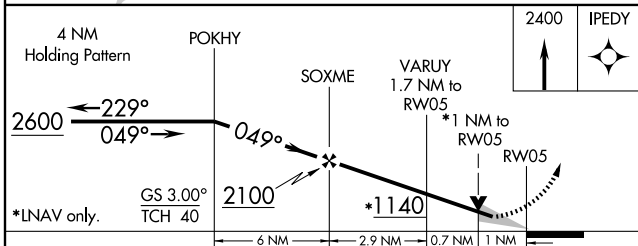
HULMAN TOWER  
**118.3 239.0**

GND CON  
**121.6 348.6**



EC-2, 22 OCT 2009 to 19 NOV 2009

EC-2, 22 OCT 2009 to 19 NOV 2009



CATEGORY	A	B	C	D
LPV DA		875/24	302 (300-½)	
LNAV/ VNAV DA		924/40	351 (400-¾)	
LNAV MDA	940/24	367 (400-½)		940/50 367 (400-1)
CIRCLING	1020-1 431 (500-1)	1040-1 451 (500-1)	1040-1½ 451 (500-1½)	1140-2 551 (600-2)

MIRL Rwy 18-36  
REIL Rwys 14, 18, 23, 32 and 36  
HIRL Rwys 5-23 and 14-32