

RNAV (GPS) RWY 32

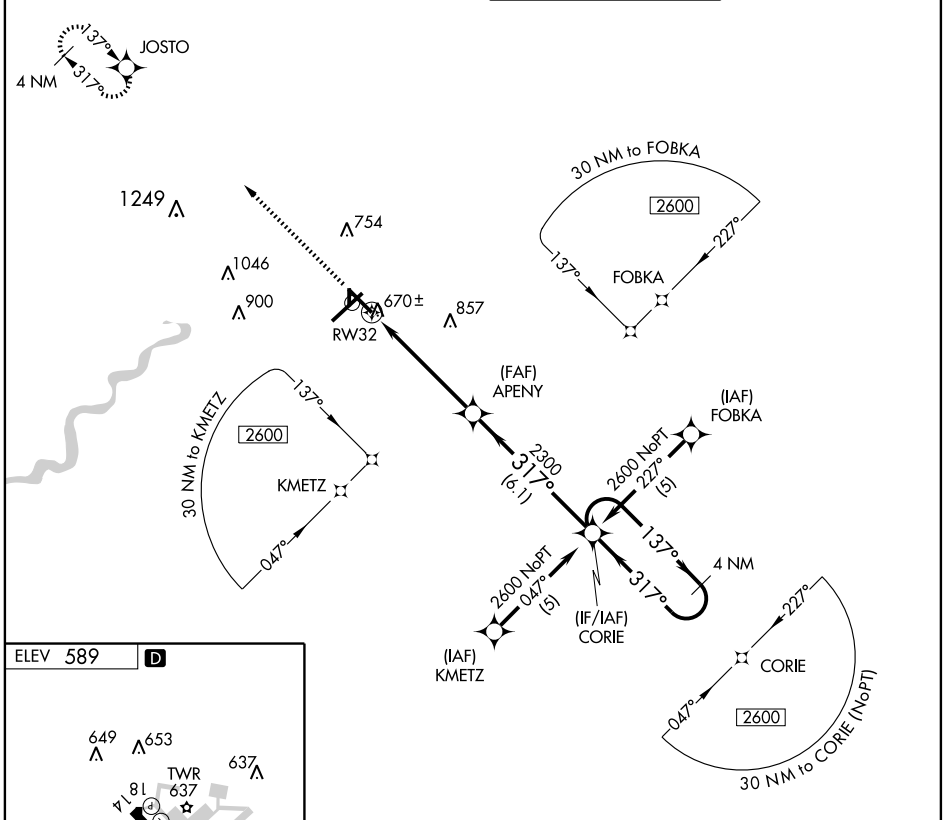
TERRE HAUTE INTL-HULMAN FIELD (HUF)

APP CRS	Rwy Idg	7200
317°	TDZE	589
	Apt Elev	589

⚠ When local altimeter setting not received, use Paris, IL altimeter setting and increase all MDA 80 feet and increase LNAV Cats. C/D visibilities ¼ mile.
⚠ ASR DME/DME RNP-0.3 NA.

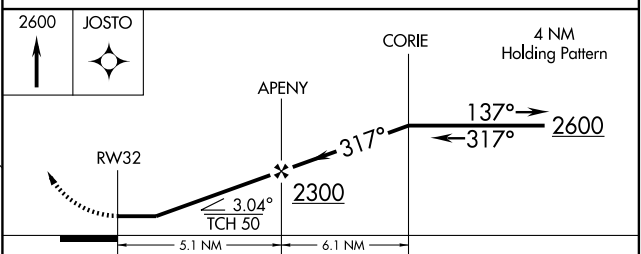
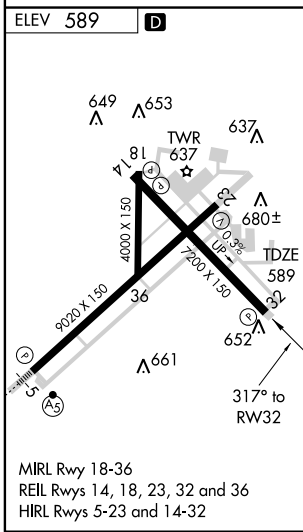
MISSED APPROACH: Climb to 2600 direct JOSTO and hold.

ATIS 127.5 284.4	HULMAN APP CON ★ 125.45 339.8	HULMAN TOWER 118.3 239.0	GND CON 121.6 348.6
----------------------------	---	------------------------------------	-------------------------------



EC-2, 22 OCT 2009 to 19 NOV 2009

EC-2, 22 OCT 2009 to 19 NOV 2009



CATEGORY	A	B	C	D
LNAV MDA	920-1 331 (400-1)			
CIRCLING	1020-1 431 (500-1)	1040-1 451 (500-1)	1040-1½ 451 (500-1½)	1140-2 551 (600-2)