

RNAV (GPS) RWY 14

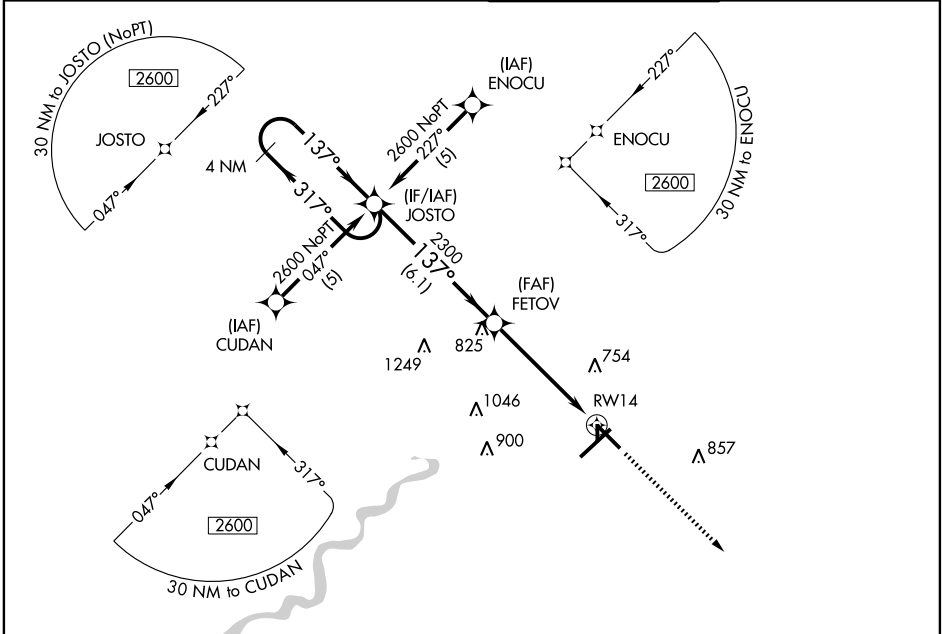
TERRE HAUTE INTL-HULMAN FIELD (HUF)

APP CRS	Rwy Idg	7200
137°	TDZE	578
	Apt Elev	589

▼ When local altimeter setting not received, use Paris, IL altimeter setting and increase all MDA 80 feet and LNAV Cat D visibility ¼ mile.
▲ DME/DME RNP-0.3 NA.
 ASR VDP NA with Paris, IL altimeter setting.

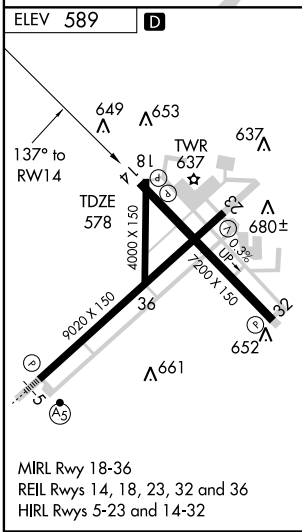
MISSED APPROACH: Climb to 2600 direct CORIE and hold.

ATIS 127.5 284.4	HULMAN APP CON ★ 125.45 339.8	HULMAN TOWER 118.3 239.0	GND CON 121.6 348.6
----------------------------	---	------------------------------------	-------------------------------

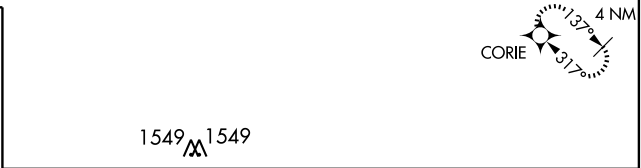


EC-2, 22 OCT 2009 to 19 NOV 2009

EC-2, 22 OCT 2009 to 19 NOV 2009



MIRL Rwy 18-36
 REIL Rws 14, 18, 23, 32 and 36
 HIRL Rws 5-23 and 14-32



CATEGORY	A	B	C	D
	980-1	402 (400-1)	980-1¼	402 (400-1¼)
LNVA MDA	1020-1	1040-1	1040-1½	1140-2
CIRCLING	431 (500-1)	451 (500-1)	451 (500-1½)	551 (600-2)