

LOC BC RWY 23

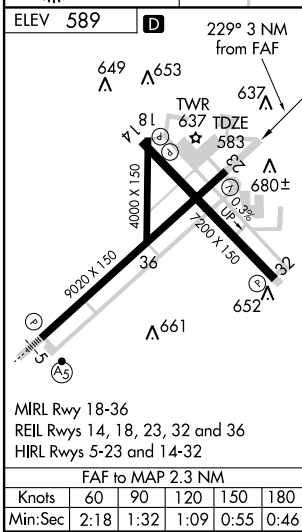
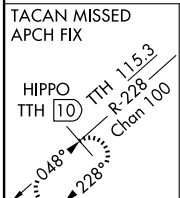
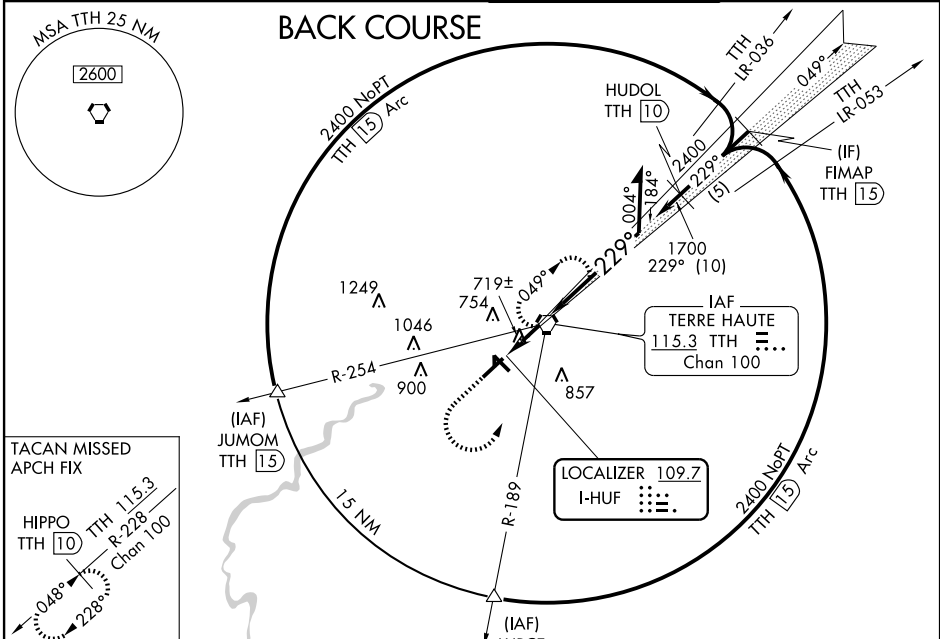
TERRE HAUTE INTL-HULMAN FIELD (HUF)

LOC I-HUF 109.7	APP CRS 229°	Rwy Idg 9020
	TDZE 583	
	Apt Elev 589	

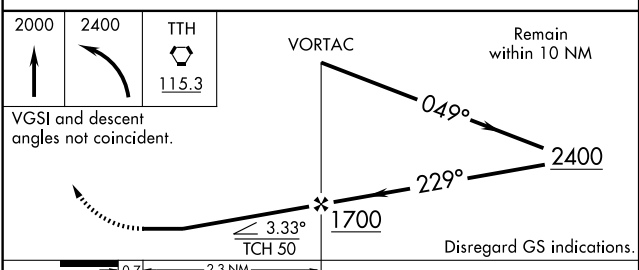
When local altimeter setting not received, use Paris altimeter setting and increase all MDA 80 feet and increase S-23 Cat C and D visibility ¼ mile.
ASR Circling NA for Cat E NW of Rwy 5-23.

MISSED APPROACH: Climb to 2000 then climbing left turn to 2400 direct TTH VORTAC and hold. (TACAN Aircraft climb to 2600 via TTH VORTAC R-228 to HIPPO/TTH 10 DME and hold.)

ATIS 127.5 284.4	HULMAN APP CON * 125.45 339.8	HULMAN TOWER 118.3 239.0	GND CON 121.6 348.6
----------------------------	---	------------------------------------	-------------------------------



PROCEDURE TURN NA FOR CAT E, DME or RADAR REQUIRED.



CATEGORY	A	B	C	D	E
S-23	980-1 397 (400-1)		980-1½ 397 (400-1½)	980-1½ 397 (400-1½)	980-1½ 397 (400-1½)
CIRCLING	1020-1 431 (500-1)	1040-1 451 (500-1)	1040-1½ 451 (500-1½)	1140-2 551 (600-2)	1220-2½ 631 (700-2½)

EC-2, 22 OCT 2009 to 19 NOV 2009

EC-2, 22 OCT 2009 to 19 NOV 2009