

BOWLING GREEN, KENTUCKY

AL-605 (FAA)

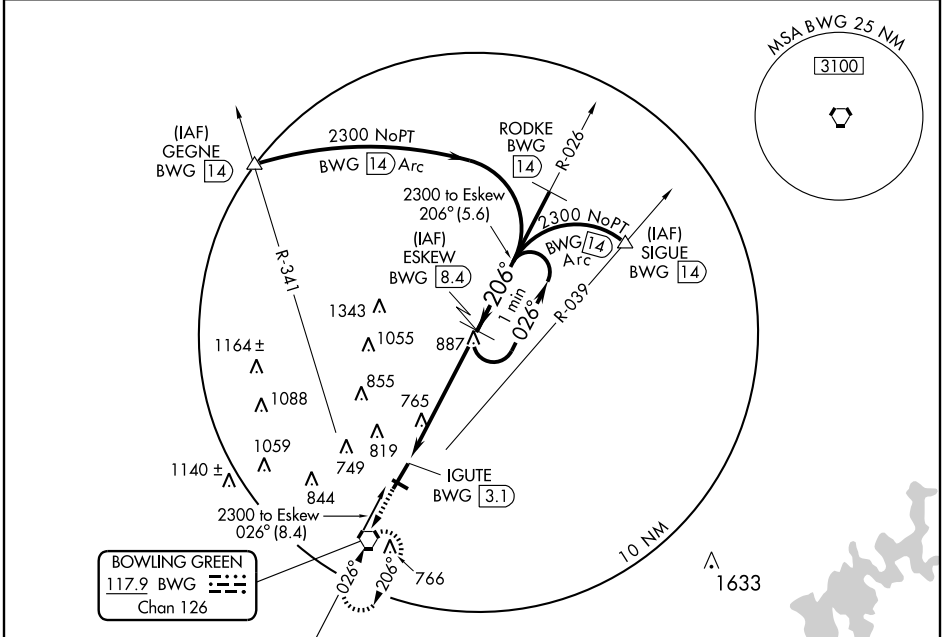
VORTAC BWG 117.9 Chan 126	APP CRS 206°	Rwy ldg 6500 TDZE 522 Apt Elev 547
---	------------------------	---

VOR/DME RWY 21

BOWLING GREEN-WARREN COUNTY RGNL (BWG)

<p>▼ ▲ NA</p>	<p>MISSED APPROACH: Climb to 2300 direct BWG VORTAC and hold.</p>
-------------------	---

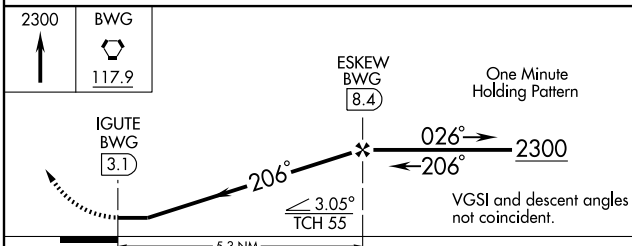
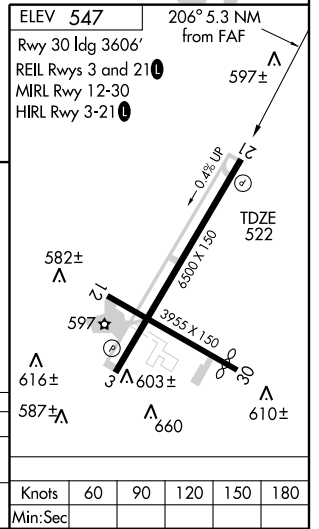
<p>ASOS 127.825</p>	<p>MEMPHIS CENTER 133.85 317.6</p>	<p>CTAF 123.0</p>
--------------------------------	---	------------------------------



SE-1, 22 OCT 2009 to 19 NOV 2009

SE-1, 22 OCT 2009 to 19 NOV 2009

BOWLING GREEN
117.9 BWG
Chan 126



CATEGORY	A		B		C		D	
	1140-1	618 (600-1)	618 (600-1)	618 (600-1)	1140-1 3/4	618 (600-1 3/4)	1140-2	618 (600-2)
S-21	1140-1	618 (600-1)	618 (600-1)	618 (600-1)	1140-1 3/4	618 (600-1 3/4)	1140-2	618 (600-2)
CIRCLING	1140-1	593 (600-1)	593 (600-1)	593 (600-1)	1140-1 3/4	593 (600-1 3/4)	1140-2	593 (600-2)

BOWLING GREEN, KENTUCKY
Amdt 8A 07298

BOWLING GREEN-WARREN COUNTY RGNL (BWG)

36° 58' N-86° 25' W

VOR/DME RWY 21