

# RNAV (GPS) RWY 21

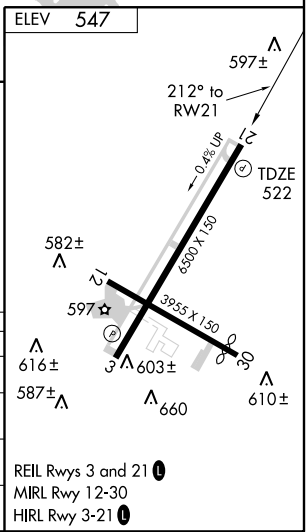
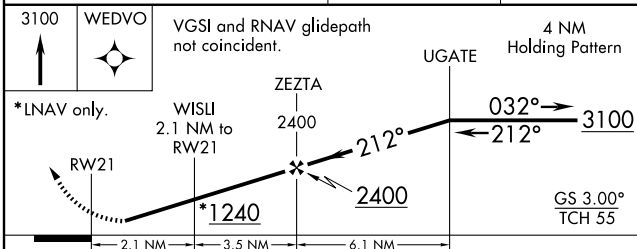
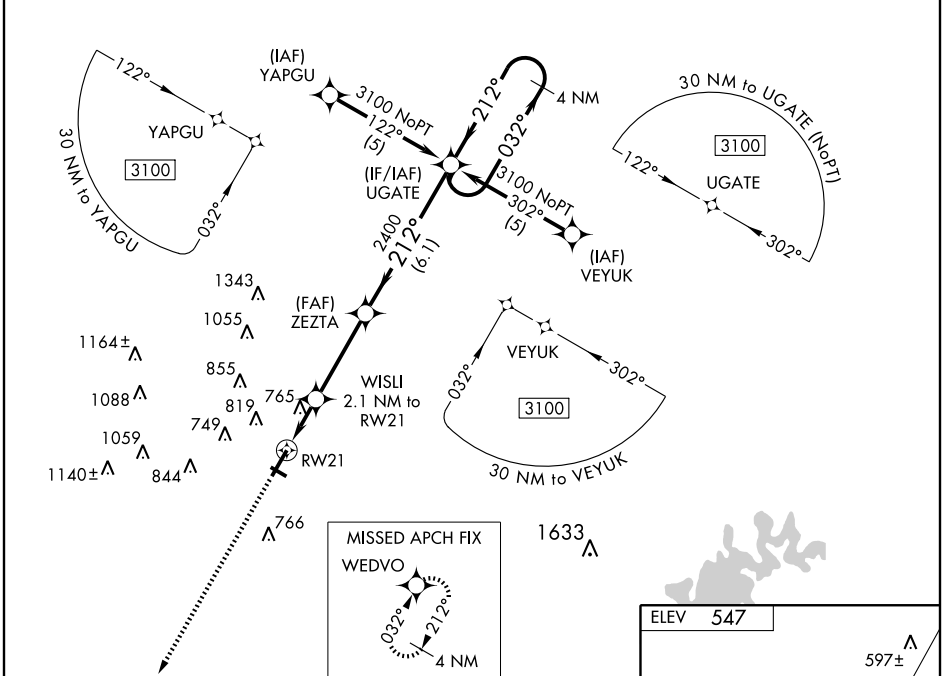
BOWLING GREEN-WARREN COUNTY RGNL (BWG)

WAAS CH <b>57907</b> <b>W21A</b>	APP CRS <b>212°</b>	Rwy Idg TDZE Apt Elev	<b>6500</b> <b>522</b> <b>547</b>
--	------------------------	-----------------------------	---

▼ Baro-VNAV NA when using Glasgow altimeter setting. For uncompensated Baro-VNAV systems, LNAV/VNAV NA below -16° C (4° F) or above 48° C (118° F). DME/DME RNP-0.3 NA.  
 ▲ Visibility reduction by helicopters NA. When local altimeter setting not received, use Glasgow altimeter setting and increase all DA 76 feet, all MDA 80 feet, and LPV all Cats. visibility ¼ mile, LNAV Cat. C and D ¼ mile, and Circling Cat. C ¼ mile.

MISSED APPROACH:  
Climb to 3100 direct WEDVO and hold.

ASOS <b>127.825</b>	MEMPHIS CENTER <b>133.85 317.6</b>	CTAF <b>123.0</b>
------------------------	---------------------------------------	----------------------



CATEGORY	A	B	C	D
LPV DA		871-1¼	349 (400-1¼)	
LNAV/ VNAV DA		1071-2	549 (600-2)	
LNAV MDA	1020-1	498 (500-1)	1020-1¼ 498 (500-1¼)	1020-1½ 498 (500-1½)
CIRCLING	1020-1 473 (500-1)	1120-1 573 (600-1)	1120-1½ 573 (600-1½)	1120-2 573 (600-2)

SE-1, 22 OCT 2009 to 19 NOV 2009

SE-1, 22 OCT 2009 to 19 NOV 2009