

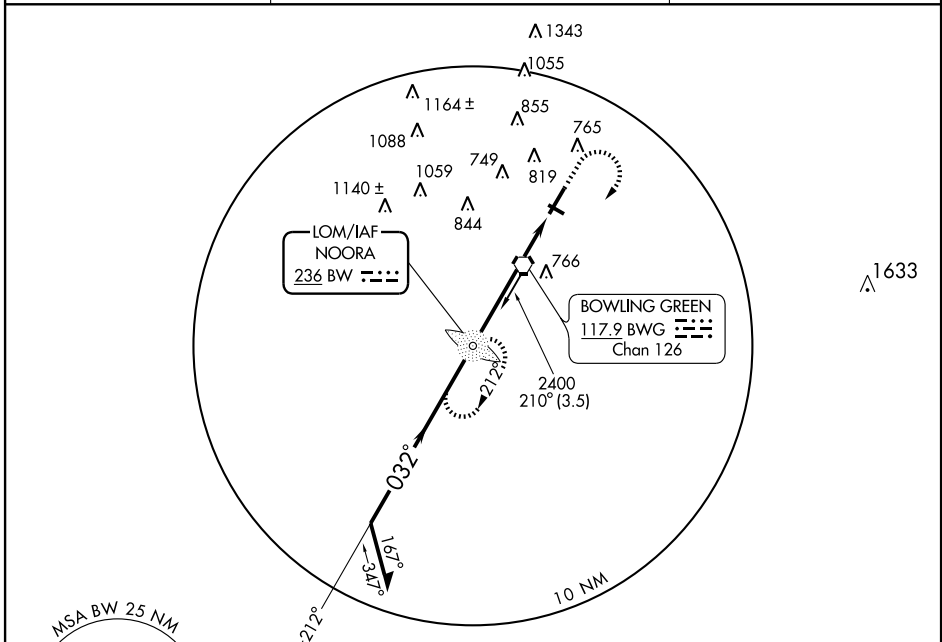
# NDB RWY 3

## BOWLING GREEN-WARREN COUNTY RGNL (BWG)

LOM BW	APP CRS	Rwy Idg	<b>6500</b>
<b>236</b>	<b>032°</b>	TDZE	<b>547</b>
		Apt Elev	<b>547</b>

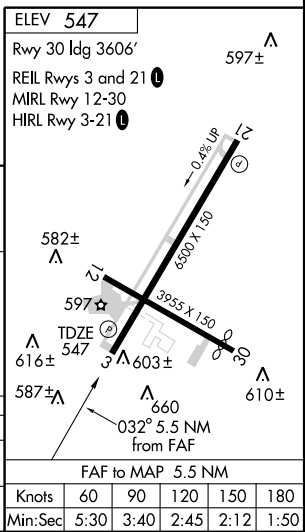
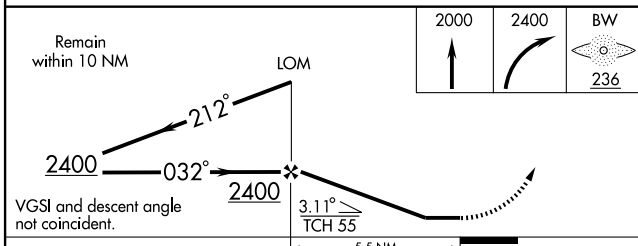
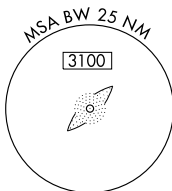
**NA** MISSED APPROACH: Climb to 2000 then climbing right turn to 2400 direct BW LOM and hold.

ASOS <b>127.825</b>	MEMPHIS CENTER <b>133.85 317.6</b>	CTAF <b>123.0</b>
------------------------	---------------------------------------	----------------------



SE-1, 22 OCT 2009 to 19 NOV 2009

SE-1, 22 OCT 2009 to 19 NOV 2009



CATEGORY	A	B	C	D
S-3	1120-1 573 (600-1)		1120-1½ 573 (600-1½)	1120-1¾ 573 (600-1¾)
CIRCLING	1120-1 573 (600-1)		1120-1½ 573 (600-1½)	1120-2 573 (600-2)