

LOC I-BWG	APP CRS	Rwy Idg	6500
108.75	032°	TDZE	547
		Apt Elev	547

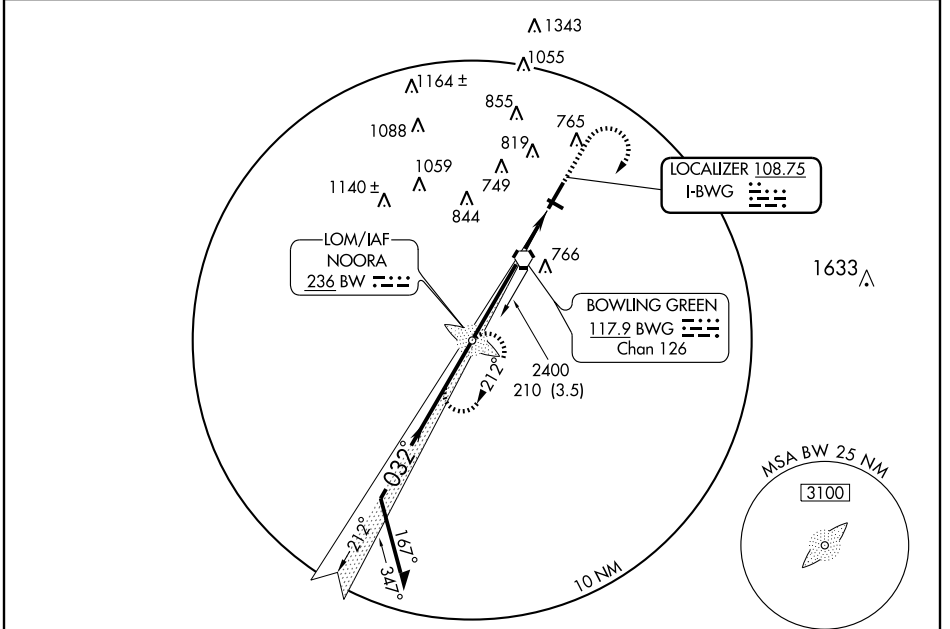
ILS RWY 3

BOWLING GREEN-WARREN COUNTY RGNL (BWG)

ADF REQUIRED

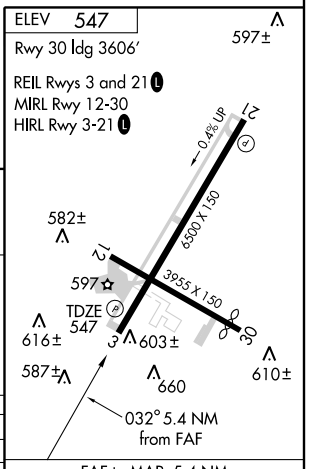
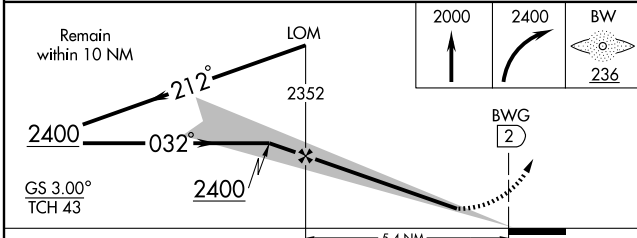
MISSED APPROACH: Climb to 2000 then climbing right turn to 2400 direct BW LOM and hold.

ASOS 127.825	MEMPHIS CENTER 133.85 317.6	CTAF 123.0 0
------------------------	---------------------------------------	------------------------



SE-1, 22 OCT 2009 to 19 NOV 2009

SE-1, 22 OCT 2009 to 19 NOV 2009



CATEGORY	A	B	C	D
S-ILS 3	747-¾ 200 (200-¾)			
S-LOC 3	960-1	413 (500-1)	960-1¼	413 (500-1¼)
CIRCLING	1000-1	1140-1	1140-1½	1140-2
	453 (500-1)	593 (600-1)	593 (600-1½)	593 (600-2)

FAF to MAP 5.4 NM					
Knots	60	90	120	150	180
Min:Sec	5:24	3:36	2:42	2:10	1:48