

VOR or TACAN RWY 20

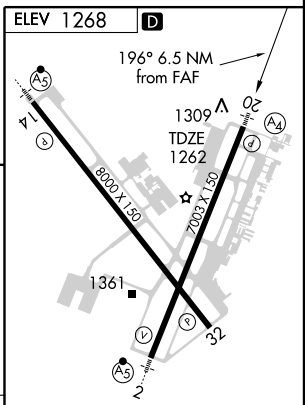
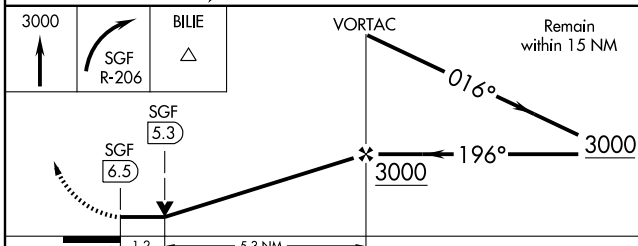
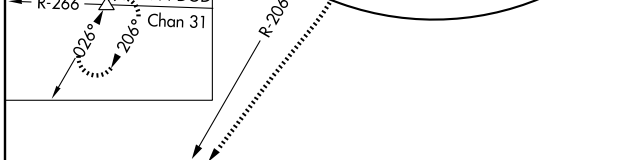
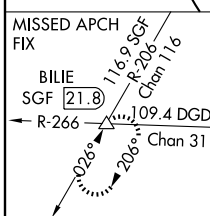
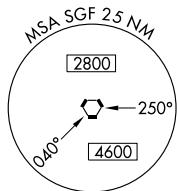
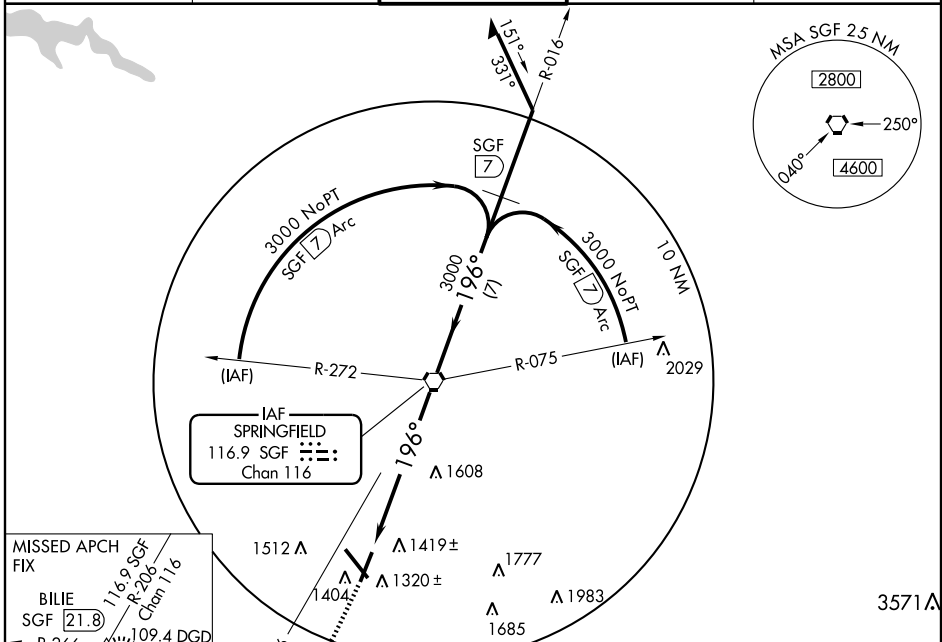
SPRINGFIELD-BRANSON NATIONAL (SGF)

VORTAC SGF 116.9 Chan 116	APP CRS 196°	Rwy Idg TDZE Apt Elev	7003 1262 1268
---	------------------------	-----------------------------	---

⚠ Inoperative table does not apply to Cat C.

MALS MISSED APPROACH: Climb to 3000 then right turn to intercept SGF R-206 to **BILIE INT/SGF 21.8 DME** and hold.

ATIS 135.125	SPRINGFIELD APP CON 121.1 290.5	SPRINGFIELD TOWER 119.9 257.8	GND CON 121.9 397.85	CLNC DEL 123.675
------------------------	---	---	--------------------------------	----------------------------



CATEGORY	A	B	C	D	E
S-20	1700-3/4 438 (500-3/4)		1700-1 1/4 438 (500-1 1/4)	1700-1 1/2 438 (500-1 1/2)	
CIRCLING	1760-1 492 (500-1)		1820-1 1/2 552 (600-1 1/2)	1820-2 552 (600-2)	1920-2 1/4 652 (700-2 1/4)

REIL Rwy 32

HIRL Rws 2-20 and 14-32

FAF to MAP 6.5 NM

Knots	60	90	120	150	180
Min:Sec	6:30	4:20	3:15	2:36	2:10

NC-3, 22 OCT 2009 to 19 NOV 2009

NC-3, 22 OCT 2009 to 19 NOV 2009