

RNAV (GPS) RWY 20

SPRINGFIELD-BRANSON NATIONAL (SGF)

WAAS CH 65613 W20A	APP CRS 199°	Rwy Idg TDZE Apt Elev	7003 1262 1268
--	------------------------	-----------------------------	---

⚠ DME/DME RNP-0.3 NA. Visibility reduction by helicopters NA.
⚠ For uncompensated Baro-VNAV systems, LNAV/VNAV NA below -17°C (2°F) or above 46°C (114°F).
 Baro-VNAV and VDP NA when using Monett altimeter setting.
 Inoperative table does not apply to LNAV/VNAV all Cats and LNAV Cat C.
 When local altimeter setting not received, use Monett altimeter setting and increase all DAs 90 feet and increase all MDAs 100 feet, increase LPV visibility all Cats ¼ mile, increase LNAV/VNAV all Cats ¼ mile, increase LNAV Cats C and D ¼ mile, increase Circling Cat C ¼ mile.

MAIS

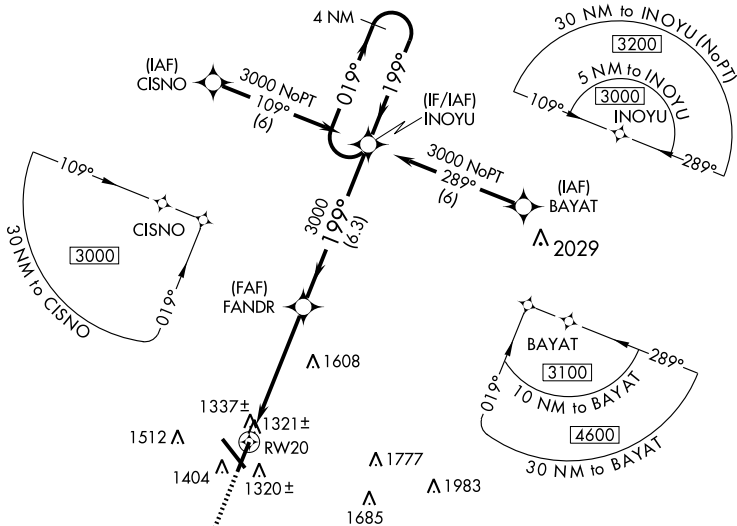


MISSED APPROACH: Climb to 3000 direct AWAQE and hold.

ATIS 135.125	SPRINGFIELD APP CON 121.1 290.5	SPRINGFIELD TOWER 119.9 257.8	GND CON 121.9 397.85	CLNC DEL 123.675
------------------------	---	---	--------------------------------	----------------------------

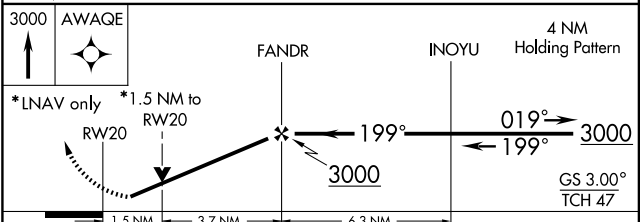
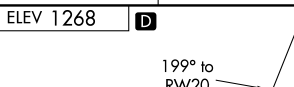
NC-3, 22 OCT 2009 to 19 NOV 2009

NC-3, 22 OCT 2009 to 19 NOV 2009



MISSED APCH FIX

AWAQE



CATEGORY	A	B	C	D
LPV DA	1531-1 269 (300-1)			
LNAV/VNAV DA	1656-1½ 394 (400-1½)			
LNAV MDA	1780-¾ 518 (600-¾)	1780-1½ 518 (600-1½)	1780-1¾ 518 (600-1¾)	1780-1¾ 518 (600-1¾)
CIRCLING	1780-1 512 (600-1)	1820-1½ 552 (600-1½)	1820-2 552 (600-2)	1820-2 552 (600-2)

REIL Rwy 32
 HIRL Rwy 2-20 and 14-32
 SPRINGFIELD, MISSOURI
 Amdt 2 09295

SPRINGFIELD-BRANSON NATIONAL (SGF)
RNAV (GPS) RWY 20