

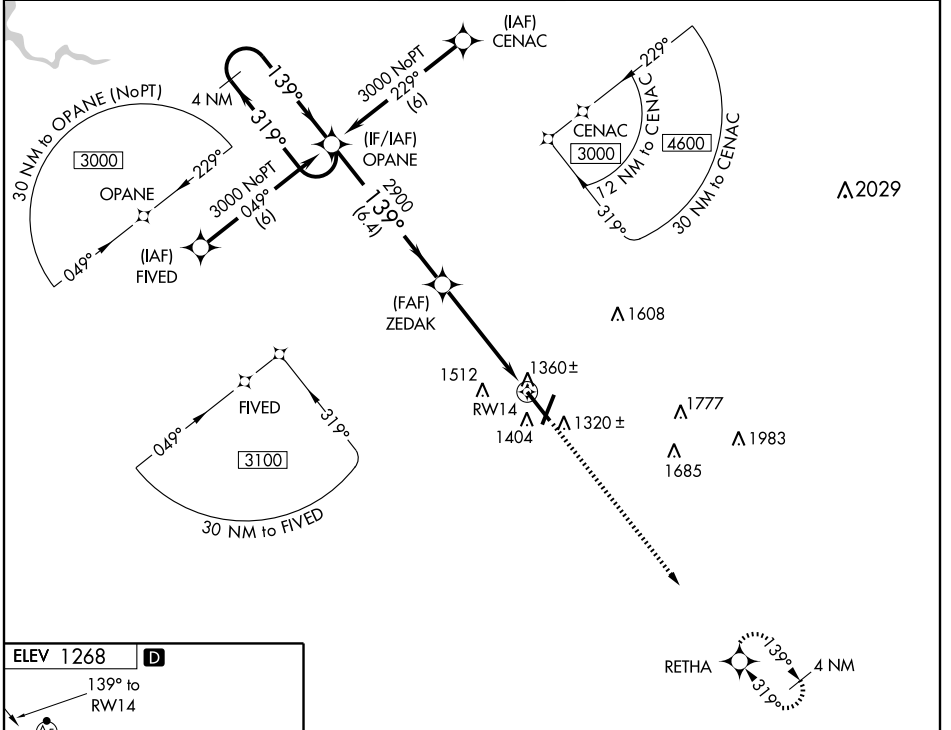
APP CRS	Rwy Idg	<b>8000</b>
<b>139°</b>	TDZE	<b>1262</b>
	Apt Elev	<b>1268</b>

# RNAV (GPS) RWY 14

SPRINGFIELD-BRANSON NATIONAL (SGF)

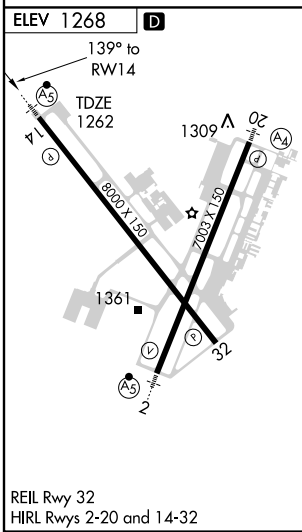
<b>▼</b> Baro-VNAV NA below -17°C (2°F).	<b>MALSR</b> 	<b>MISSED APPROACH:</b> Climb to 3000 direct RETHA WP and hold.
<b>▲NA</b> DME/DME RNP-0.3 NA.		

<b>ATIS</b> <b>135.125</b>	<b>SPRINGFIELD APP CON</b> <b>121.1 290.5</b>	<b>SPRINGFIELD TOWER</b> <b>119.9 257.8</b>	<b>GND CON</b> <b>121.9 397.85</b>	<b>CLNC DEL</b> <b>123.675</b>
-------------------------------	--	--	---------------------------------------	-----------------------------------



NC-3, 22 OCT 2009 to 19 NOV 2009

NC-3, 22 OCT 2009 to 19 NOV 2009



4 NM Holding Pattern		OPANE	ZEDAK	3000	RETHA
3000		← 319°	139° →	139°	* 1.3 NM to RWY 14
GS 3.00°				2900	* LNAV only
TCH 56		6.4 NM		3.6 NM	1.3 NM
CATEGORY	A	B	C	D	
GLS PA DA	NA				
LNAV/VNAV DA	1620-¾ 358 (400-¾)				
LNAV MDA	1720-½	458 (500-½)	1720-¾	458 (500-¾)	1720-1
CIRCLING	1760-1	492 (500-1)	1820-1½	552 (600-1½)	1820-2
				552 (600-2)	