


ILS or LOC RWY 2

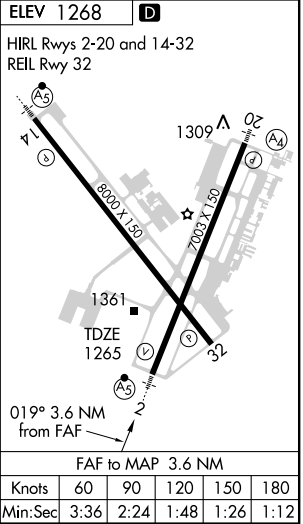
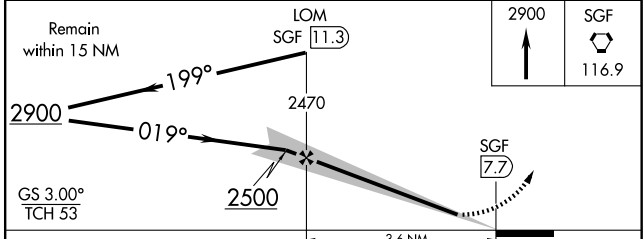
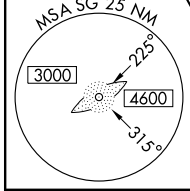
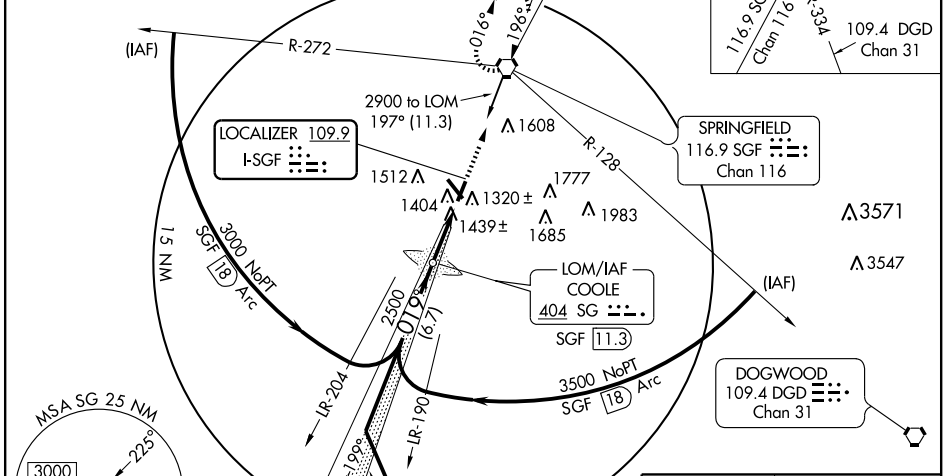
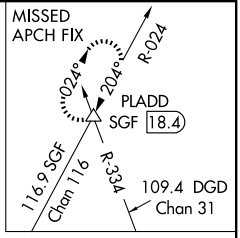
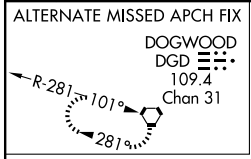
SPRINGFIELD-BRANSON NATIONAL (SGF)

LOC I-SGF 109.9	APP CRS 019°	Rwy Idg 6893
		TDZE 1265
		Apt Elev 1268

For inoperative MALSR, increase S-ILS 2 Cat E visibility to 3/4 and S-LOC 2 Cat E to 1 1/2.
 * Vis Cat A/B/C/D RVR 1800 authorized with the use of FD or AP or HUD to DA.

MALSR  MISSED APPROACH: Climb to 2900 direct SGF VORTAC and hold. (TACAN aircraft continue via R-024 to PLADD Int and hold N, right turn 204° inbound).

ATIS 135.125	SPRINGFIELD APP CON 121.1 290.5	SPRINGFIELD TOWER 119.9 257.8	GND CON 121.9 397.85	CLNC DEL 123.675
------------------------	---	---	--------------------------------	----------------------------



CATEGORY	A	B	C	D	E
S-ILS 2	* 1465/24 200 (200-1/2)				
S-LOC 2	1700/40	435 (500-3/4)		1700/50	435 (500-1)
CIRCLING	1740-1	472 (500-1)	1820-1 1/2 552 (600-1 1/2)	1820-2 552 (600-2)	1920-2 1/4 652 (700-2 1/4)

NC-3, 22 OCT 2009 to 19 NOV 2009

NC-3, 22 OCT 2009 to 19 NOV 2009