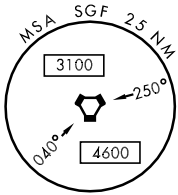
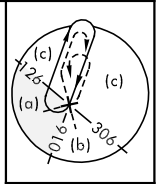


VORTAC SGF 116.9 Chan 116	APCH CRS 196°	Rwy Idg 7003 TDZE 1262 Arpt Elev 1268	JAL-604 [USAF]	SPRINGFIELD-BRANSON NATIONAL (KSGF)
---------------------------------	------------------	---	----------------	-------------------------------------

ATIS 135.125		SPRINGFIELD APP CON 121.1 290.5		SPRINGFIELD TOWER 119.9 257.8		GND CON 121.9 397.85		CLNC DEL 123.675	
------------------------	--	---	--	---	--	--------------------------------	--	----------------------------	--

MISSED APPROACH: Climb to 3000 then right turn via SGF VORTAC R-206 to BILLIE INT/SGF 22 DME and hold.				
--	--	--	--	--

* When local altimeter setting not received, use Monett Altimeter setting and increase all S-20 MDAs to 1860 and vis CAT C to 1½ miles, CAT D to 1¾ miles, CAT E to 2 miles. Circling MDAs increase CAT C to 1920, vis to 1¾ miles, CAT D to 1920, CAT E to 2020, vis to 2¾ miles.



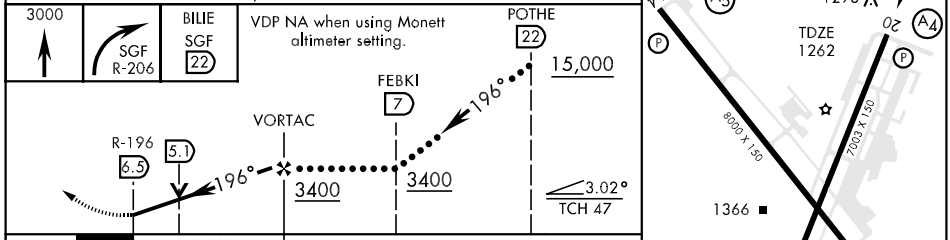
SPRINGFIELD
116.9 SGF
Chan 116

DOGWOOD
109.4 DGD
Chan 31

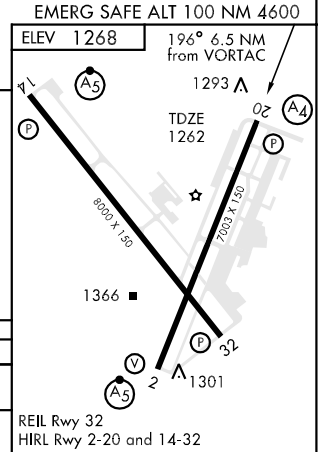
BILLIE
SGF
22

FEBKI
SGF
7

SGF 32
R-016
POTHE
SGF
22



CATEGORY	C	D	E
S-20*	1760-1¼ 498 (500-1¼)	1760-1½ 498 (500-1½)	1760-1¾ 498 (500-1¾)
CIRCLING*	1820-1½ 552 (600-1½)	1820-2 552 (600-2)	1920-2¼ 652 (700-2¼)



NC-3, 22 OCT 2009 to 19 NOV 2009

NC-3, 22 OCT 2009 to 19 NOV 2009