

PONCA CITY, OKLAHOMA

AL-603 (FAA)

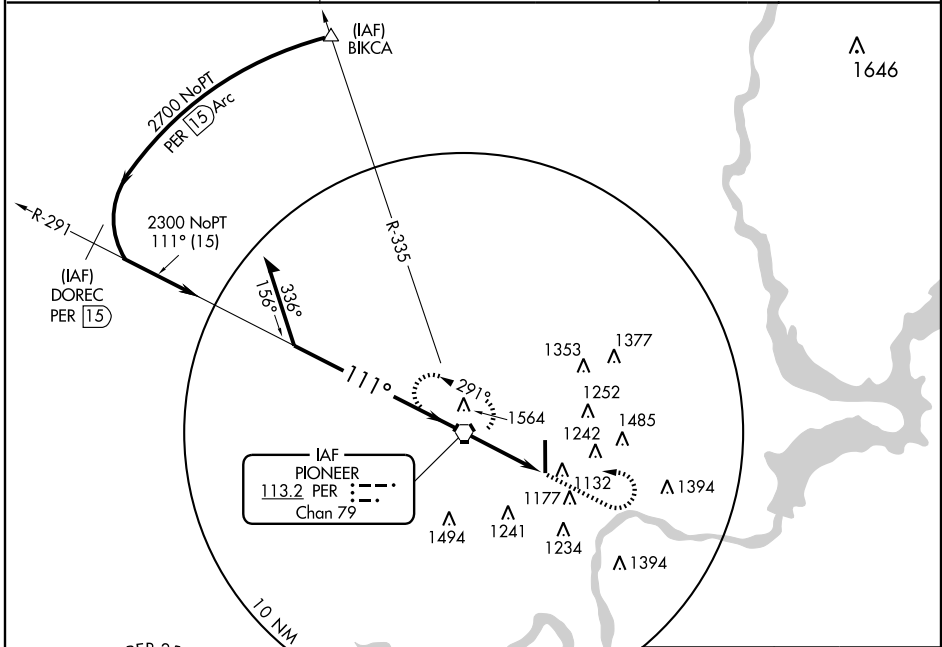
VOR-A

PONCA CITY RGNL (PNC)

VORTAC PER <b>113.2</b> Chan 79	APP CRS <b>111°</b>	Rwy Idg TDZE Apt Elev <b>1007</b>	<b>N/A</b> <b>N/A</b> <b>1007</b>
---------------------------------------	------------------------	--	---

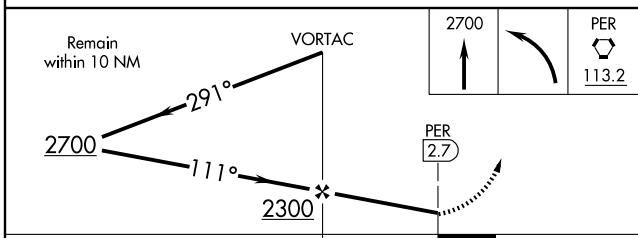
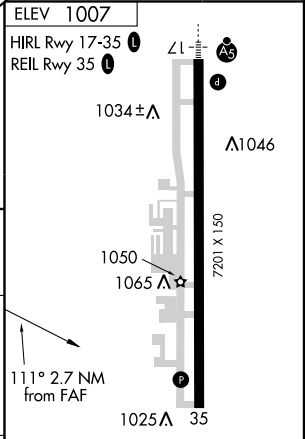
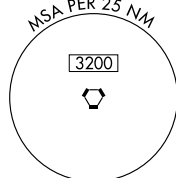
MISSED APPROACH: Climb to 2700 then left turn direct PER VORTAC and hold.

ASOS <b>134.075</b>	KANSAS CITY CENTER <b>127.8 319.1</b>	UNICOM <b>123.0 (CTAF)</b>
------------------------	--	-------------------------------



SC-1, 22 OCT 2009 to 19 NOV 2009

SC-1, 22 OCT 2009 to 19 NOV 2009



CATEGORY	FAF to MAP 2.7 NM					
	A	B	C	D		
CIRCLING	1460-1 453 (500-1)	1480-1 473 (500-1)	1560-1½ 553 (600-1½)	1560-2 553 (600-2)		
	Knots	60	90	120	150	180
	Min:Sec	2:42	1:48	1:21	1:05	0:54

PONCA CITY, OKLAHOMA  
Amdt 10A 08325

36°44'N-97°06'W

PONCA CITY RGNL (PNC)

VOR-A