

RNAV (GPS) RWY 17

PONCA CITY RGNL (PNC)

WAAS CH 50408 W17A	APP CRS 175°	Rwy Idg TDZE Apt Elev	7201 1004 1008
--	------------------------	-----------------------------	---

▼ For inoperative MALS, increase LPV visibility to 1 mile. For uncompensated Baro-VNAV systems, LNAV/VNAV NA below -17°C (2°F) or above 47°C (116°F). DME/DME RNP-0.3 NA. When local altimeter setting not received use Winfield-Arkansas City altimeter setting and increase all DA 82 feet and MDA 100 feet; increase LPV all Cats, LNAV/VNAV all Cats LNAV Cat C and Cat D and circling Cat C visibility ¼ mile. VDP NA when using Winfield-Arkansas City altimeter setting. For inoperative MALS when using Winfield-Arkansas City altimeter setting, increase LPV and LNAV/VNAV visibility ¼ mile all Cats, increase LNAV Cats C and D visibility ¼ mile. Baro-VNAV NA when using Winfield-Arkansas City altimeter setting.

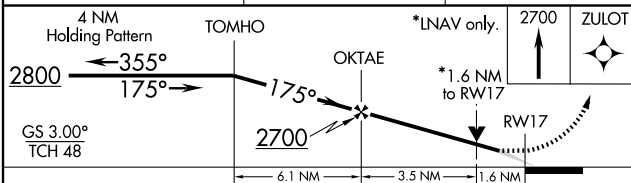
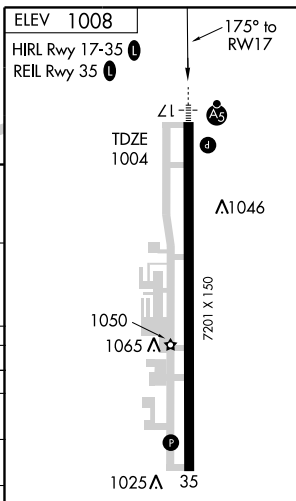
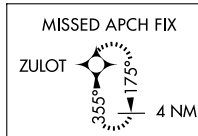
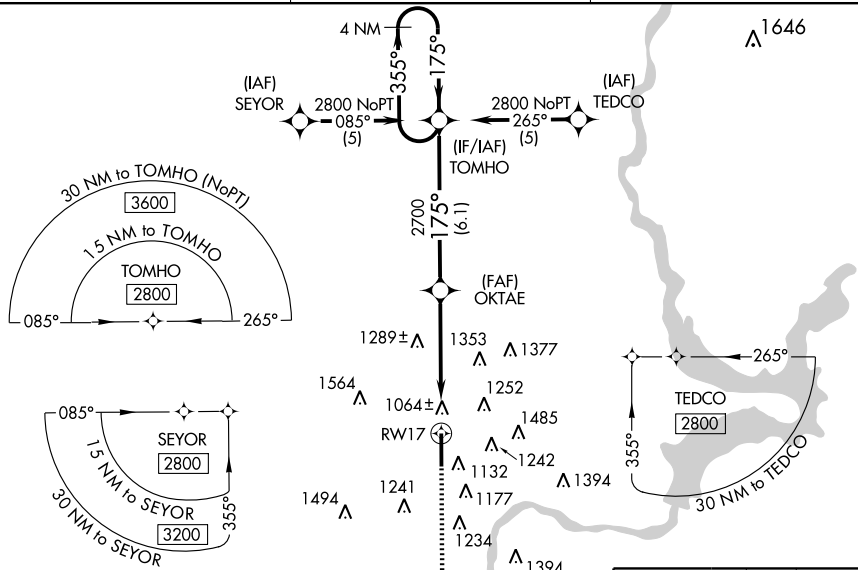
MALS

MISSED APPROACH:
 Climb to 2700 direct ZULOT and hold.

ASOS
134.075

KANSAS CITY CENTER
127.8 319.1

UNICOM
123.0 (CTAF) 0



CATEGORY	A	B	C	D
LPV DA		1279-½	275 (300-½)	
LNAV/VNAV DA		1330-¾	326 (400-¾)	
LNAV MDA	1540-½ 536 (600-½)		1540-1 536 (600-1)	1540-1½ 536 (600-1¼)
CIRCLING	1540-1 532 (600-1)		1560-1½ 552 (600-1½)	1560-2 552 (600-2)

SC-1, 22 OCT 2009 to 19 NOV 2009

SC-1, 22 OCT 2009 to 19 NOV 2009