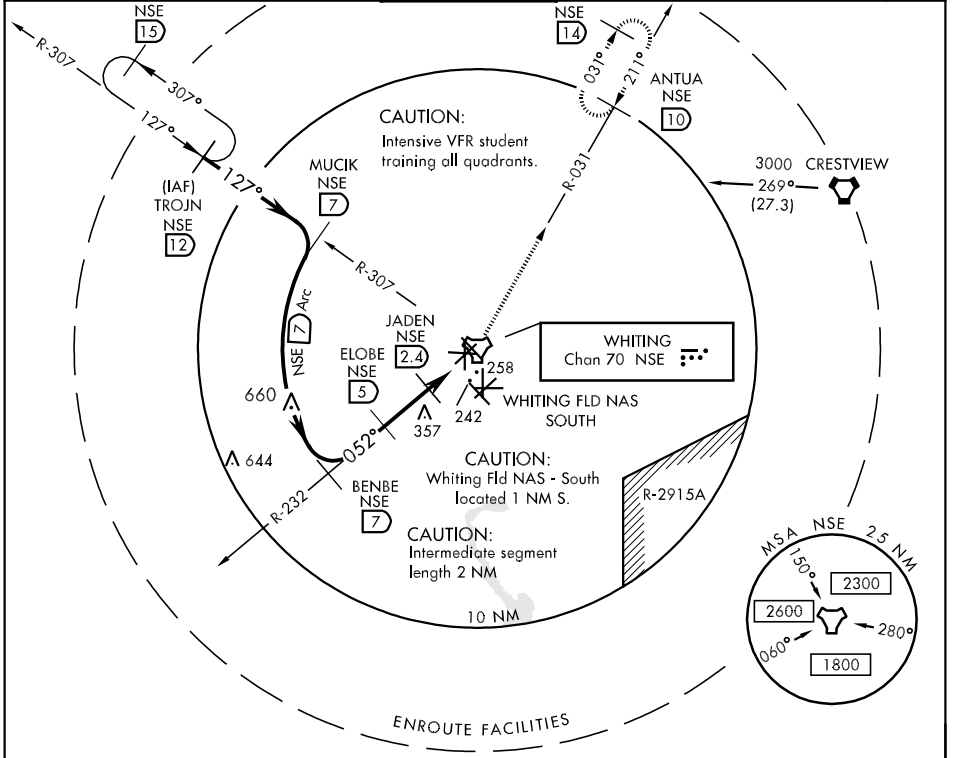


TACAN NSE Chan 70	APCH CRS 052°	Rwy Idg TDZE Arpt Elev 6002 180 199	AL-602 [USN]	WHITING FLD NAS - NORTH (KNSE)
-----------------------------	-------------------------	---	--------------	--------------------------------

* Circling not authorized in sector SE of Rwy 5-23 and SW of Rwy 14-32. MISSED APPROACH: Climb to 3000 via R-232 to NSE TACAN, then via NSE R-031 to ANTUA and hold. Contact Pensacola APP CON.

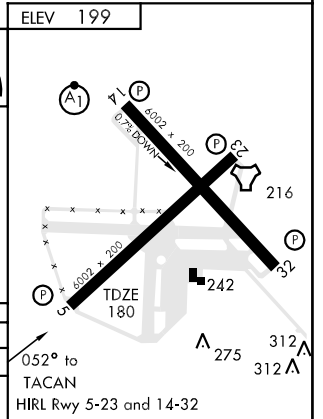
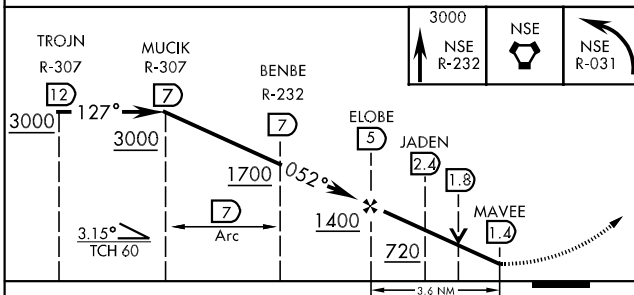
ATIS ★ 290.325	PENSACOLA APP CON 127.35 278.8	NORTH WHITING TOWER ★ 121.4 306.925	GND CON 251.15	CLNC DEL 257.775	ASR
--------------------------	--	--	--------------------------	----------------------------	-----



SE-3, 22 OCT 2009 to 19 NOV 2009

SE-3, 22 OCT 2009 to 19 NOV 2009

EMERG SAFE ALT 100 NM 3500



CATEGORY	A	B	C	D
S-5		520-1	340 (400-1)	
CIRCLING *	580-1 381 (400-1)	660-1 461 (500-1)	660-1½ 461 (500-1½)	760-2 561 (600-2)