

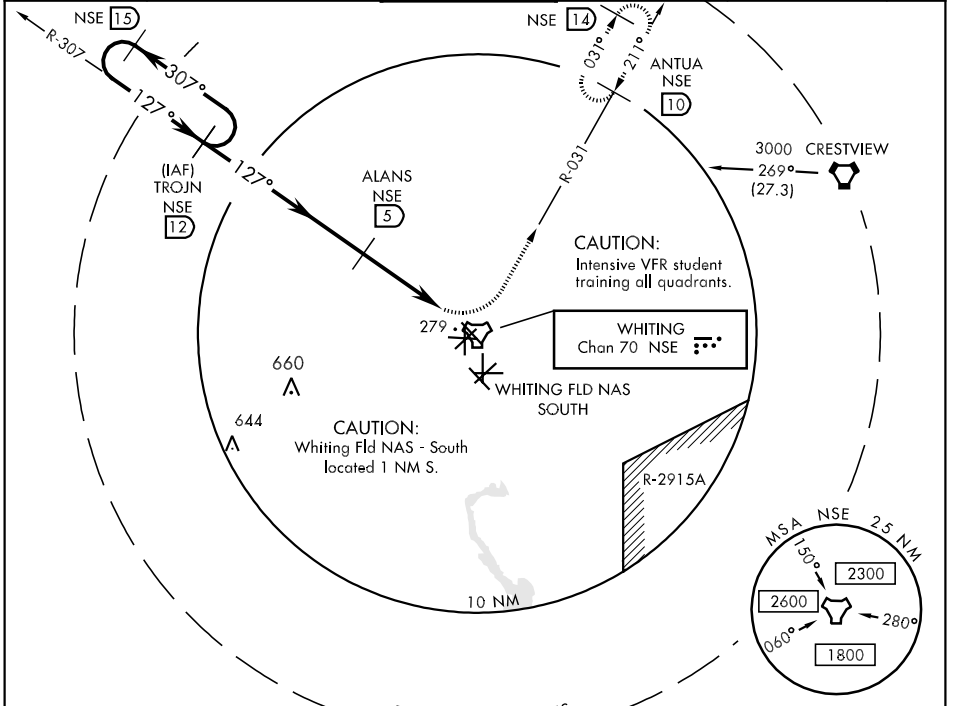
TACAN NSE Chan 70	APCH CRS 127°	Rwy ldg TDZE 6002 199 Arpt Elev 199	AL-602 [UNSW]	WHITING FLD NAS - NORTH (KNSE)
-----------------------------	-------------------------	--	---------------	--------------------------------

* When ALS inop, increase vis to 1 mile.
 ** Circling not authorized in sector SE of Rwy 5-23 and SW of Rwy 14-32.

ALSF-1

MISSED APPROACH: Climb to 600, then climbing left turn to 3000, intercept NSE R-031 to ANTUA and hold. Contact Pensacola APP CON.

ATIS ★ 290.325	PENSACOLA APP CON 127.35 278.8	NORTH WHITING TOWER ★ 121.4 306.925	GND CON 251.15	CLNC DEL 257.775	ASR
--------------------------	--	---	--------------------------	----------------------------	-----



EMERG SAFE ALT 100 NM 3500 ENROUTE FACILITIES ELEV 199

	TROJN R-307 307°	ALANS NSE 5 1700	LUZZE TACAN 1.2	ANTUA NSE 10 211	127° TO TACAN
	3000	1700	3.8 NM	6002 x 200	6002 x 200
CATEGORY	A	B	C	D	
S-14 *	540-½	341 (400-½)	540-¾ 341 (400-¾)		
CIRCLING**	580-1 381 (400-1)	660-1 461 (500-1)	660-1½ 461 (500-1½)	760-2 561 (600-2)	

HIRL Rwy 5-23 and 14-32

SE-3, 22 OCT 2009 to 19 NOV 2009

SE-3, 22 OCT 2009 to 19 NOV 2009