

MILTON, FLORIDA

RNAV (GPS) RWY 14

APCH CRS	Rwy Idg	6002
139°	TDZE	199
	Arprt Elev	199

AL-602 [USN]

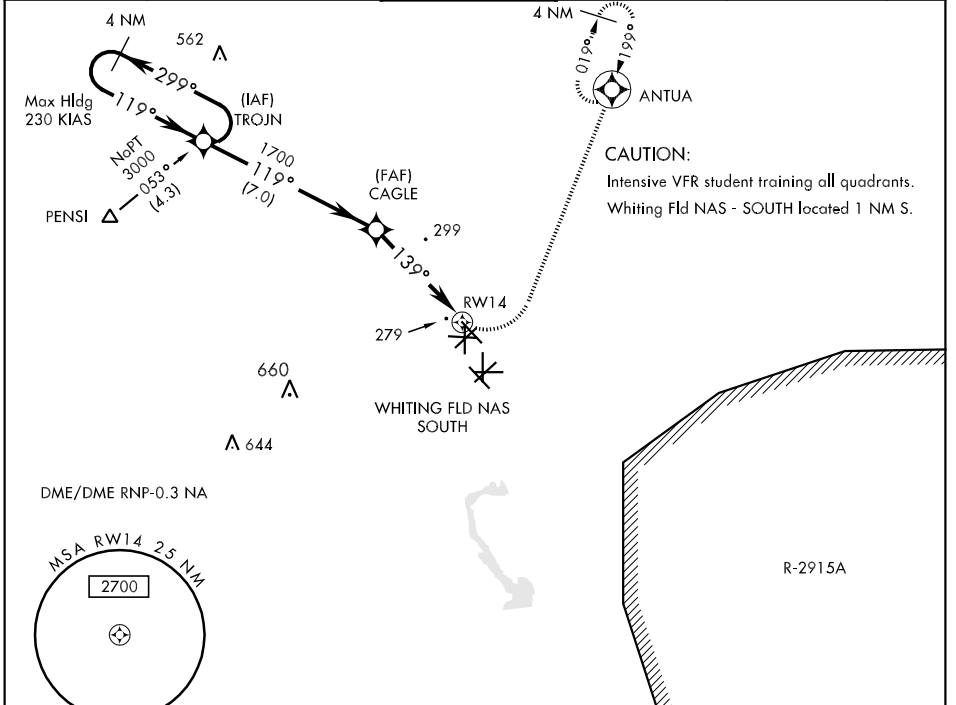
WHITING FLD NAS - NORTH (KNSE)

*When ALS inop, increase vis CAT AB to 1 mile, CAT D to 1 1/4 mile.
 ** Circling not authorized in sector SE of Rwy 5-23 and SW of Rwy 14-32.



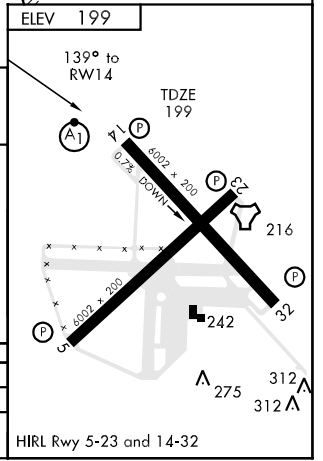
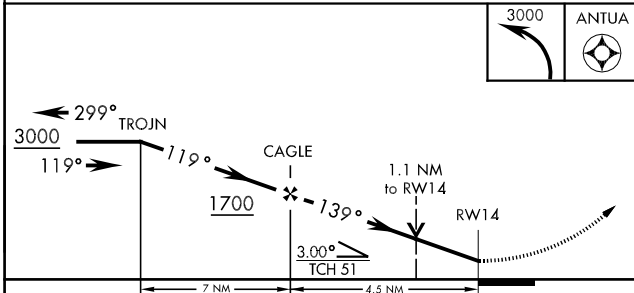
MISSED APPROACH: Climbing left turn to 3000, direct ANTUA and hold. Contact Pensacola APP CON.

ATIS ★	PENSACOLA APP CON	NORTH WHITING TOWER ★	GND CON	CLNC DEL	ASR
290.325	127.35 278.8	121.4 306.925	251.15	257.775	



CAUTION:
Intensive VFR student training all quadrants.
Whiting Fld NAS - SOUTH located 1 NM S.

EMERG SAFE ALT 100 NM 3500



CATEGORY	A	B	C	D
LNVAV MDA *	600-1/2 401 (500-1/2)		600-3/4 401 (500-3/4)	
CIRCLING **	600-1 401 (500-1)	660-1 461 (500-1)	660-1 1/2 461 (500-1 1/2)	760-2 561 (600-2)

MILTON, FLORIDA
Orig 09295

30° 43' N - 87° 01' W

WHITING FLD NAS - NORTH (KNSE)

RNAV (GPS) RWY 14

SE-3, 22 OCT 2009 to 19 NOV 2009

SE-3, 22 OCT 2009 to 19 NOV 2009