

ILS or LOC RWY 22

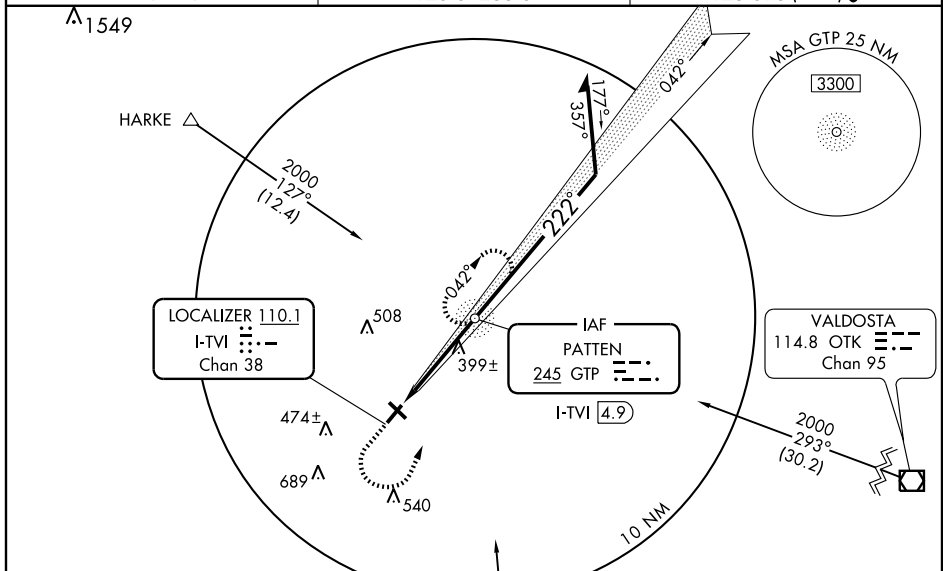
THOMASVILLE RGNL (TVI)

LOC/DME I-TVI 110.1 Chan 38	APP CRS 222°	Rwy Idg 5496 TDZE 242 Apt Elev 264
-------------------------------------------------	------------------------	---------------------------------------------------------------

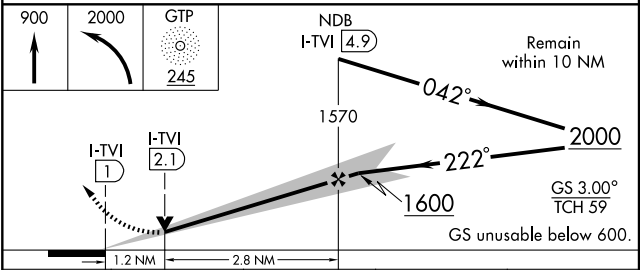
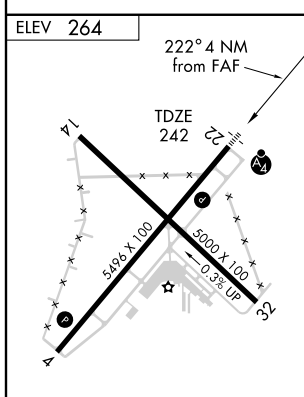
Inoperative table does not apply to S-LOC 22 Cat. C.
ADF REQUIRED. When local altimeter setting not received, use Valdosta altimeter setting and increase DA to 683 feet, increase all MDAs 100 feet, increase S-ILS 22 visibilities ¼ mile, S-LOC 22 Cat. C ¼ mile, and Cat. D ½ mile. VDP NA when using Valdosta altimeter setting.

MALSF
MISSED APPROACH: Climb to 900 then climbing left turn to 2000 direct GTP NDB and hold.

AWOS-3 119.175	VALDOSTA APP CON★ 126.6 285.6	UNICOM 123.075 (CTAF) 0
--------------------------	-----------------------------------------	-----------------------------------



ADF or DME REQUIRED



FAF to MAP 4 NM					
Knots	60	90	120	150	180
Min:Sec	4:00	2:40	2:00	1:36	1:20
CATEGORY	A	B	C	D	
S-ILS 22	600-1¼ 358 (400-1¼)				
S-LOC 22	660-¾ 418 (400-¾)	660-1¼ 418 (400-1¼)			
CIRCLING	680-1 416 (500-1)	720-1 456 (500-1)	720-1½ 456 (500-1½)	840-2 576 (600-2)	

SE-4, 22 OCT 2009 to 19 NOV 2009

SE-4, 22 OCT 2009 to 19 NOV 2009