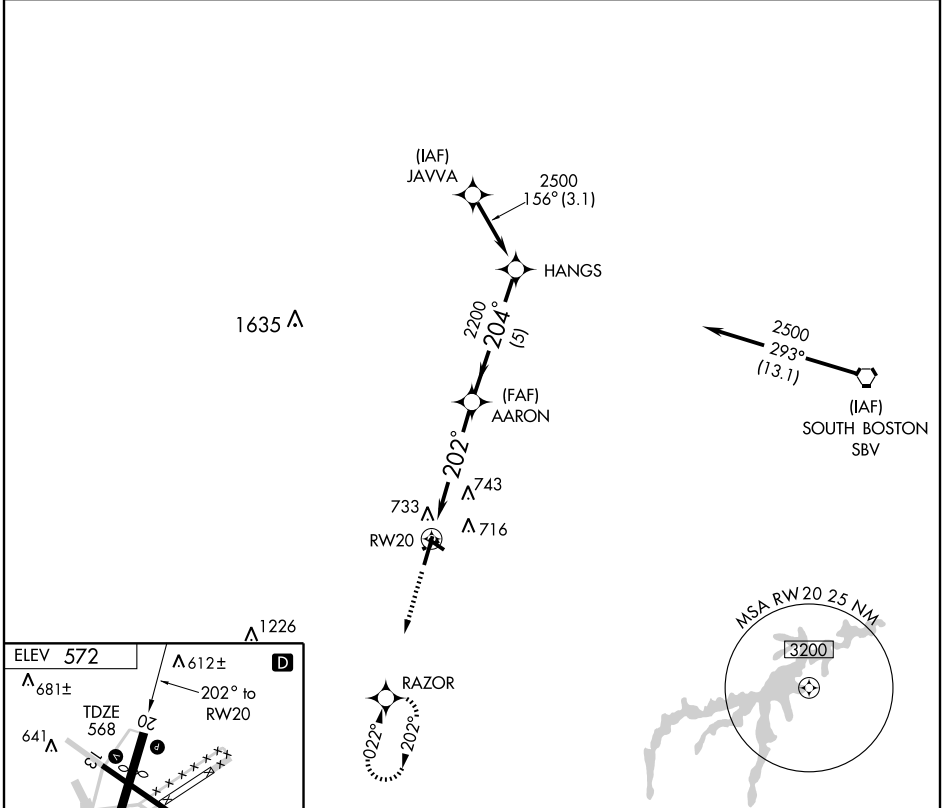


GPS RWY 20
DANVILLE RGNL (DAN)

APP CRS 202°	Rwy Idg 5600
	TDZE 568
	Apt Elev 572

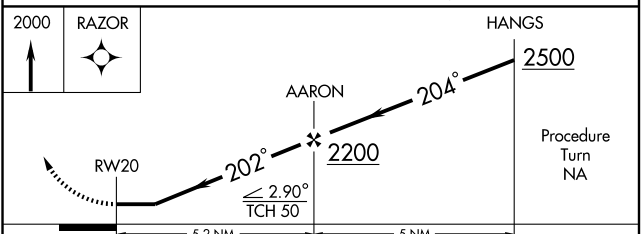
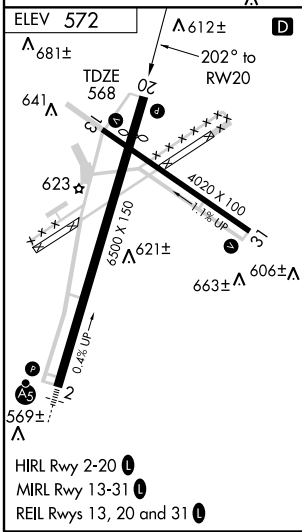
▽ If local altimeter setting not received, use Greensboro, NC altimeter setting and increase all MDAs 160 feet.
▲ NA MISSED APPROACH: Climb to 2000 direct RAZOR WP and hold.

ASOS 128.125	WASHINGTON CENTER 124.05 307.0	UNICOM 123.05 (CTAF) 0
------------------------	--	----------------------------------



NE-3, 22 OCT 2009 to 19 NOV 2009

NE-3, 22 OCT 2009 to 19 NOV 2009



CATEGORY	A	B	C	D
S-20	1000-1 432 (500-1)		1000-1¼ 432 (500-1¼)	1000-1½ 432 (500-1½)
CIRCLING	1060-1 488 (500-1)		1060-1½ 488 (500-1½)	1140-2 568 (600-2)