

TACAN NXX Chan <b>61</b>	APCH CRS <b>328°</b>	Rwy ldg TDZE Arpt Elev <b>8002</b> <b>358</b> <b>358</b>
-----------------------------	-------------------------	-------------------------------------------------------------------------

AL-598 [USN]

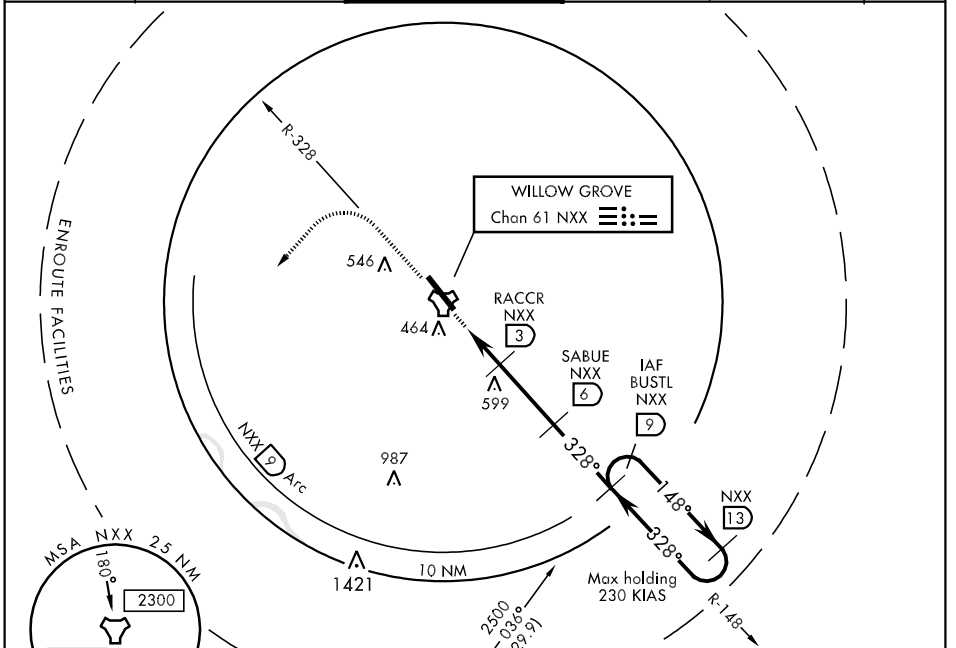
WILLOW GROVE NAS JRB (KNXX)

▼ \* When ALS inop, increase vis CAT ABC to 1 mile, CAT DE to 1 1/4 miles.  
 \*\* When ALS inop, increase vis CAT AB to 3/4 mile.

MALSF

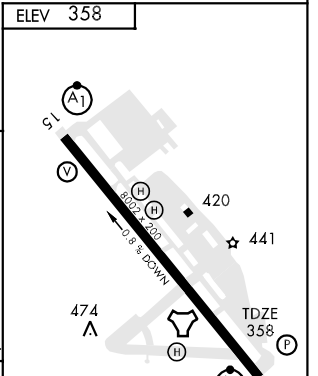
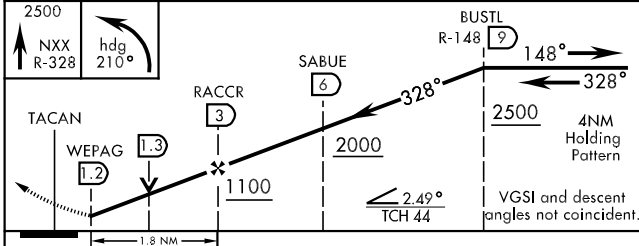
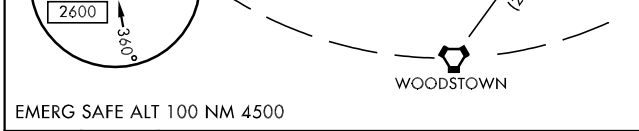
MISSED APPROACH: Climb to 2500 via NXX R-328. Then turn left heading 210° to join and arc SW via the NXX TACAN 9 mile arc to BUSTL and hold.

ATIS ★ <b>275.6</b>	PHILADELPHIA APP CON <b>123.8 291.7</b>	WILLOW GROVE TOWER ★ <b>119.6 340.2</b>	GND CON <b>118.45 380.8</b>	CLNC DEL <b>118.45 380.8</b>	ASR/PAR
------------------------	--------------------------------------------	--------------------------------------------	--------------------------------	---------------------------------	---------



NE-4, 22 OCT 2009 to 19 NOV 2009

NE-4, 22 OCT 2009 to 19 NOV 2009



CATEGORY	A	B	C	D	E
S-33 *	720-3/4	362	(400-3/4)	720-1	362 (400-1)
CIRCLING	800-1 442 (500-1)	960-1 602 (700-1)	960-1 3/4 602 (700-1 3/4)	960-2 602 (700-2)	960-2 1/4 602 (700-2 1/4)
S-PAR 33 **	558-1/2	200 (200-1/2)	558-3/4	200 (200-3/4)	GS 3.0°

HIRL Rwy 15-33