

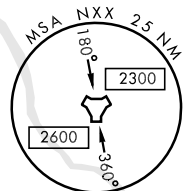
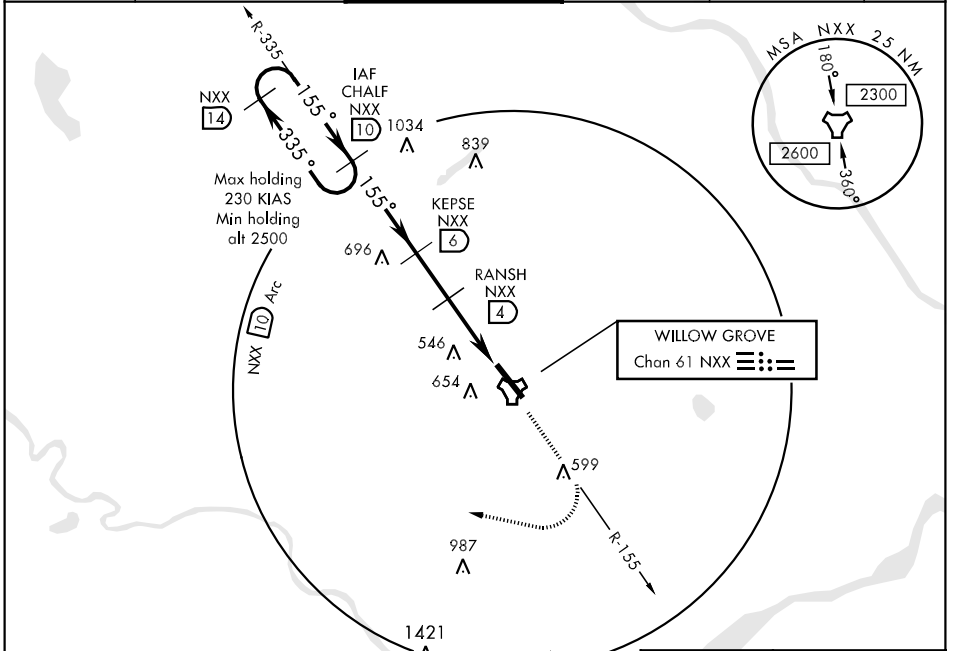
TACAN NXX Chan <b>61</b>	APCH CRS <b>155°</b>	Rwy Idg TDZE Arpt Elev <b>8002</b> <b>324</b> <b>358</b>	AL-598 [USN]	WILLOW GROVE NAS JRB (KNXX)
-----------------------------	-------------------------	---	--------------	-----------------------------

▼ \* When ALS inop, increase CAT AB vis to 1 mile, CAT C vis to 1¼ miles, CAT D vis to 1½ miles, CAT E vis to 1¾ miles.  
▼ \*\* When ALS inop, increase vis to ¾ mile.



**MISSED APPROACH:** Climb to 2500 via NXX R-155. Then turn right heading 270° to join and arc W via NXX TACAN 10 mile arc to CHALF and hold.

ATIS ★ <b>275.6</b>	PHILADELPHIA APP CON <b>123.8 291.7</b>	WILLOW GROVE TOWER ★ <b>119.6 340.2</b>	GND CON <b>118.45 380.8</b>	CLNC DEL <b>118.45 380.8</b>	ASR/PAR
------------------------	--	--	--------------------------------	---------------------------------	---------



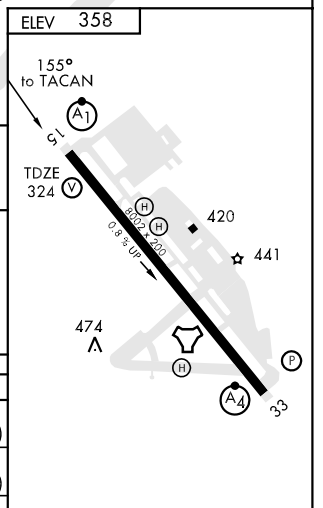
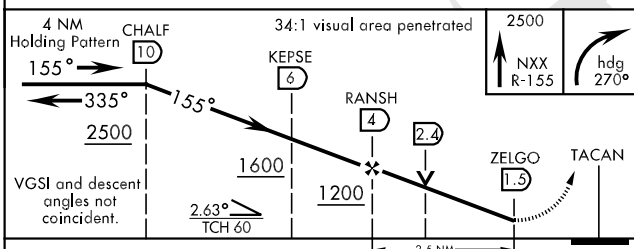
**WILLOW GROVE**  
Chan 61 NXX

NE-4, 22 OCT 2009 to 19 NOV 2009

NE-4, 22 OCT 2009 to 19 NOV 2009

## RADAR REQUIRED

EMERG SAFE ALT 100 NM 4500



CATEGORY	A	B	C	D	E
S-15 *	800-¾	476	(500-¾)	800-1 476 (500-1)	800-1¼ 476 (500-1¼)
CIRCLING	800-1 442 (500-1)	960-1 602 (700-1)	960-1¾ 602 (700-1¾)	960-2 602 (700-2)	960-2¼ 602 (700-2¼)
S-PAR 15 **	524-½		200 (200-½)	GS 3.25°	

HIRL Rwy 15-33