

WILLOW GROVE, PENNSYLVANIA

# RNAV (GPS) RWY 33

WILLOW GROVE NAS JRB (KNXX)

APCH CRS <b>334°</b>	Rwy Idg <b>8002</b>
	TDZE <b>358</b>
	Arpt Elev <b>358</b>

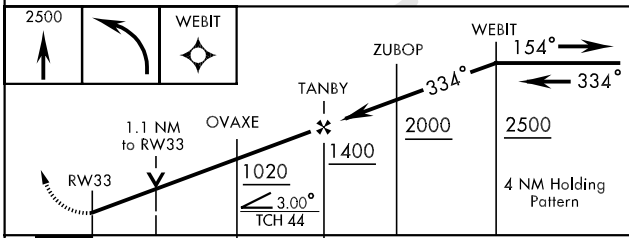
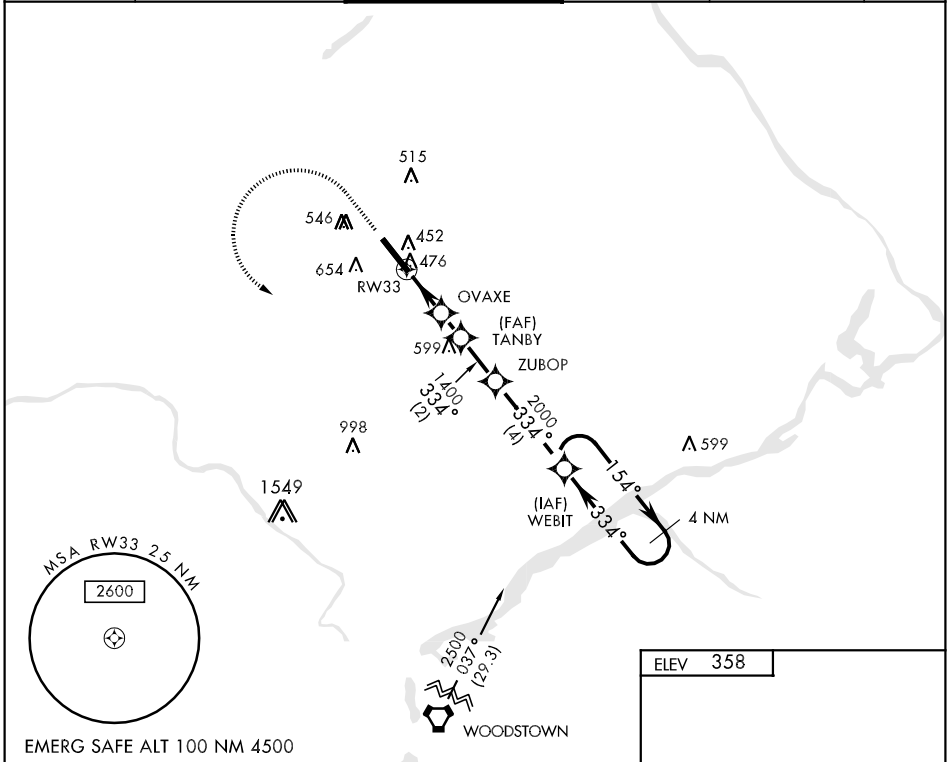
AL-598 [USN]



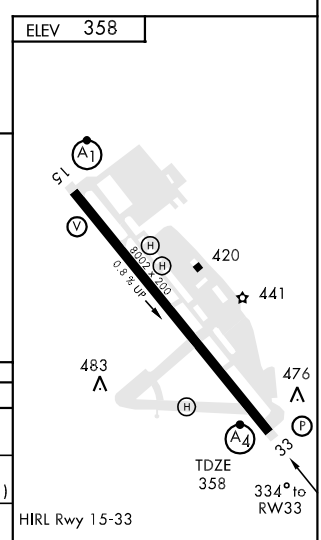
MISSED APPROACH: Climb to 2500 then turn left direct WEBIT and hold.

▼ \* When ALS inop, increase CAT ABC vis to 1 mile, CAT DE vis to 1½ miles.  
 \*\* When ALS inop, increase vis CAT AB to ¾ mile.

ATIS ★ <b>275.6</b>	PHILADELPHIA APP CON <b>123.8 291.7</b>	WILLOW GROVE TOWER ★ <b>119.6 340.2</b>	GND CON <b>118.45 380.8</b>	CLNC DEL <b>118.45 380.8</b>	ASR/PAR
------------------------	--	--	--------------------------------	---------------------------------	---------



CATEGORY	A	B	C	D	E
LNAV MDA*	740-¾	382	(400-¾)	740-1	382 (400-1)
CIRCLING	800-1 442 (500-1)	960-1 602 (700-1)	960-1¾ 602 (700-1¾)	960-2 602 (700-2)	960-2¼ 602 (700-2¼)
S-PAR 15**	558-½	200 (200-½)	558-¾	200 (200-¾)	GS 3.0°



NE-4, 22 OCT 2009 to 19 NOV 2009

NE-4, 22 OCT 2009 to 19 NOV 2009

WILLOW GROVE, PENNSYLVANIA  
08325

40° 12'N-75° 09'W

WILLOW GROVE NAS JRB (KNXX)

# RNAV (GPS) RWY 33