

WILLOW GROVE, PENNSYLVANIA

NDB or NDB/DME RWY 15

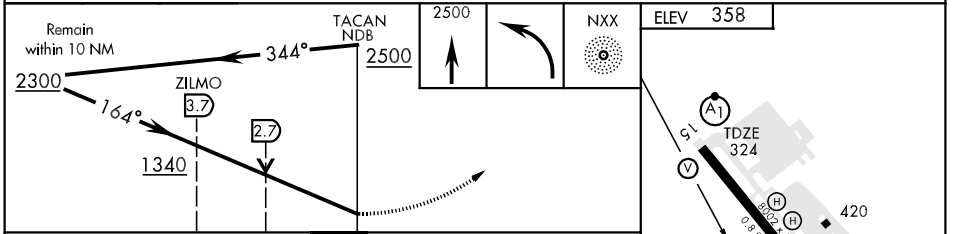
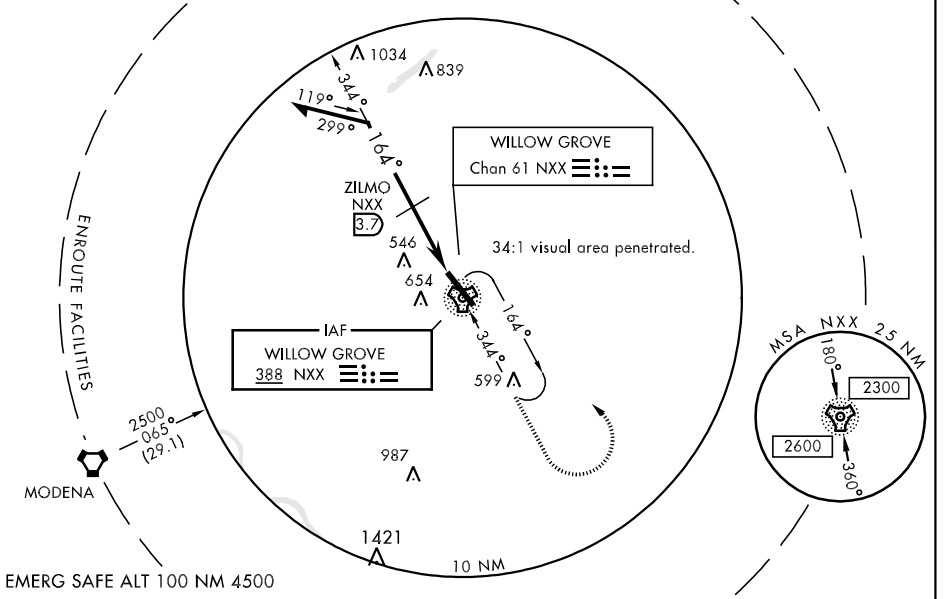
NDB NXX 388	APCH CRS 164°	Rwy Idg TDZE Arpt Elev 8002 324 358	AL-598 [USN]	WILLOW GROVE NAS JRB (KNXX)
-----------------------	-------------------------	---	--------------	-----------------------------

▼ * When ALS inop, increase vis CAT AB to 1½ miles, CAT CD to 3 miles.
 ** When ALS inop, increase vis CAT ABCD to ¾ mile.

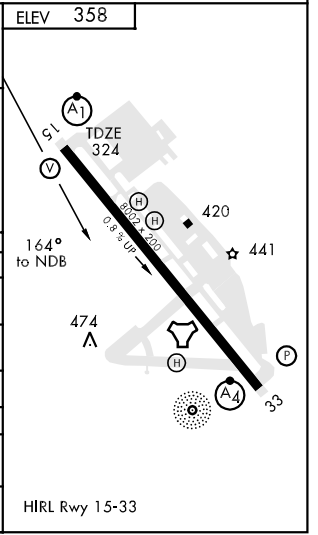
Ⓐ1 Ⓜ MISSED APPROACH: Climb to 2500, turn left and return to NXX NDB and hold.

ATIS ★ 275.6	PHILADELPHIA APP CON 123.8 291.7	WILLOW GROVE TOWER ★ 119.6 340.2	GND CON 118.45 380.8	CLNC DEL 118.45 380.8	ASR/PAR
------------------------	--	--	--------------------------------	---------------------------------	---------

*** When ALS inop, increase vis CAT AB to 1½ miles, CAT C to 1¾ miles, CAT D to 2 miles..



CATEGORY	A	B	C	D
S-NDB 15 *	1340-1	1016 (1000-1)	1340-2½	1016 (1000-2½)
CIRCLING	1340-1½	982 (1000-1½)	1340-3	982 (1000-3)
S-PAR 15 **	524-½	200	[200-½]	GS 3.25°
WITH 3.7 DME STEPDOWN FIX				
S-NDB/ DME 15 ***	960-1	636 (700-1)	960-1¼	960-1½
CIRCLING	960-1½	602 (700-1½)	960-1¾	602 (700-2)



WILLOW GROVE, PENNSYLVANIA 40° 12'N-75° 09'W WILLOW GROVE NAS JRB (KNXX)

NDB or NDB/DME RWY 15

NE-4, 22 OCT 2009 to 19 NOV 2009

NE-4, 22 OCT 2009 to 19 NOV 2009