

PEORIA, ILLINOIS

AL-597 (FAA)

# VOR/DME or TACAN RWY 31

PEORIA/GREATER PEORIA RGNL (PIA)

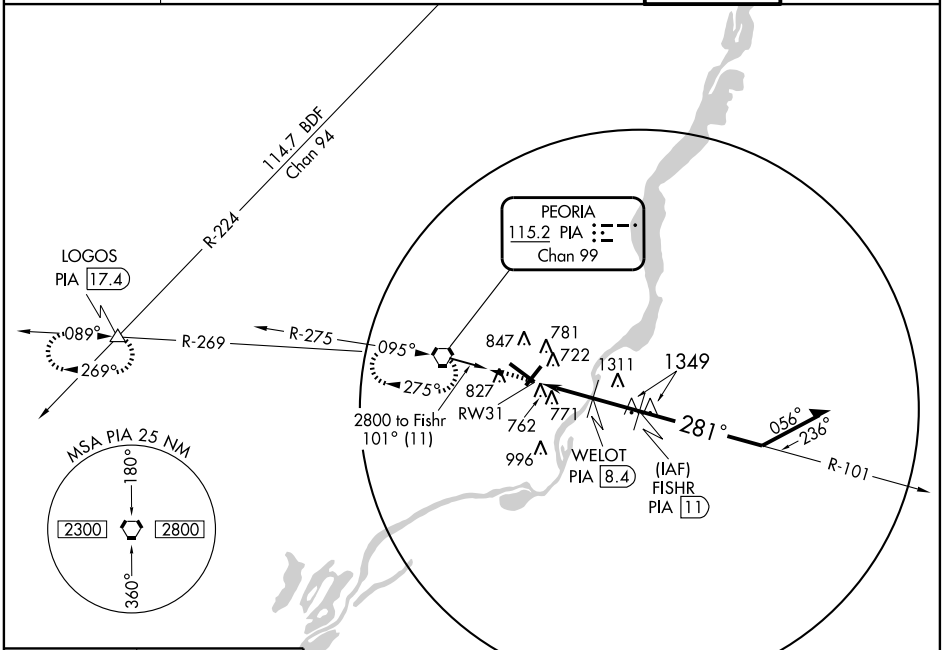
VORTAC PIA <b>115.2</b> Chan <b>99</b>	APP CRS <b>281°</b>	Rwy ldg <b>10104</b> TDZE <b>651</b> Apt Elev <b>660</b>
--	------------------------	--

**⚠** If local altimeter setting not available, use Logan County altimeter setting and increase all MDAs 100 feet. VDP NA when using Logan County altimeter setting. Inoperative table does not apply.

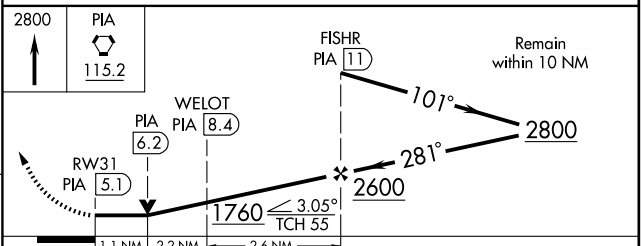
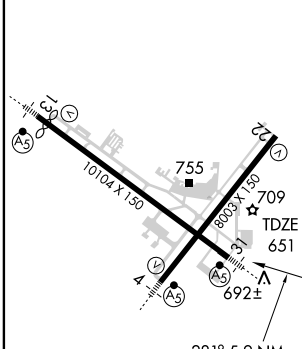


**MALSR** MISSED APPROACH: Climb to 2800 direct PIA VORTAC and hold, continue climb-in-hold to 2800. (TACAN aircraft continue via PIA R-269 to LOGOS Int/PIA 17.4 DME and hold west, right turn, 089° inbound).

ATIS <b>126.10 282.2</b>	PEORIA APP CON <b>125.8 269.2</b> (305°-125°) <b>124.675 326.2</b> (126°-304°)	PEORIA TOWER <b>119.1 252.9</b>	GND CON <b>121.85 348.6</b>
-----------------------------	---	------------------------------------	--------------------------------



ELEV 660	Rwy 13 ldg 9500'
----------	------------------



CATEGORY	A	B	C	D
S-31	1040/50 389 (400-1)			1040/60 389 (400-1½)
CIRCLING	1160-1 500 (500-1)		1160-1½ 500 (500-1½)	1220-2 560 (600-2)

PEORIA, ILLINOIS  
Amdt 9 07298

PEORIA/GREATER PEORIA RGNL (PIA)  
40°40'N-89°42'W **VOR/DME or TACAN RWY 31**

EC-3, 22 OCT 2009 to 19 NOV 2009

EC-3, 22 OCT 2009 to 19 NOV 2009